

STATE OF TEXAS

§

§

COUNTY OF WILLIAMSON

§

**SUPPLEMENTAL CONTRACT NO. 4  
TO CONTRACT FOR ENGINEERING SERVICES**

**FIRM:** TETRA TECH, INC. (“Engineer”)  
**ADDRESS:** 4801 Southwest Parkway, Pkwy 1, Suite 185, Austin, TX 78735  
**PROJECT:** CR 112 Improvements from A.W. Grimes Boulevard to CR 117

This Supplemental Contract No. 4 to Contract for Engineering Services is made by and between the City of Round Rock, Texas, hereinafter called the “City” and Tetra Tech, Inc., (formerly known as RPS Infrastructure, Inc.) hereinafter called the “Engineer.”

**WHEREAS**, the City and Engineer executed a Contract for Engineering Services, hereinafter called the “Contract,” on the 5th day of December, 2019 for the CR 112 Improvements from A.W. Grimes Boulevard to CR 117 Project in the amount of \$347,442.39; and

**WHEREAS**, the City and Engineer executed Supplemental Contract No. 1 on July 22, 2021 to amend the scope of services and to increase the compensation by \$663,281.84 to a total of \$1,010,724.23; and

**WHEREAS**, the City and Engineer executed Supplemental Contract No. 2 on December 21, 2022 to amend the scope of services and to increase the compensation by \$38,850.00 to a total of \$1,049,574.23; and

**WHEREAS**, the City and Engineer executed Supplemental Contract No. 3 on March 8, 2024 to amend the scope of services and to increase the compensation by \$39,700.00 to a total of \$1,089,274.23; and

**WHEREAS**, it has become necessary to amend the Contract to modify the provisions for the scope of services and to increase the compensation by \$103,722.00 to a total of \$1,192,996.23;

**NOW THEREFORE**, premises considered, the City and the Engineer agree that said Contract is amended as follows:

I.

Article 2, Engineering Services and Exhibit B, Engineering Services shall be amended as set forth in the attached Addendum to Exhibit B. Exhibit C, Work Schedule shall be amended as set forth in the attached Addendum to Exhibit C.

II.

Article 4, Compensation and Exhibit D, Fee Schedule shall be amended by increasing by \$103,722.00 the lump sum amount payable under the Contract for a total of \$1,192,996.23, as shown by the attached Addendum to Exhibit D.

**IN WITNESS WHEREOF**, the City and the Engineer have executed this Supplemental Contract in duplicate.

*[signature pages follow]*

**TETRA TECH, INC.**

By:   
Kevin Hoffman, Regional Transportation Director

8 / 8 / 2025  
**Date**

**CITY OF ROUND ROCK**

**APPROVED AS TO FORM:**

**By:** \_\_\_\_\_  
**Craig Morgan, Mayor**

\_\_\_\_\_  
**Stephanie L. Sandre, City Attorney**

\_\_\_\_\_  
**Date**

**ADDENDUM TO EXHIBIT B**  
**Engineering Services**

**SCOPE OF WORK - Supplemental**  
**for Roadway Improvements on CR 112 from A.W. Grimes Blvd to CR 117**  
**Round Rock, Texas**

From: A.W. Grimes Blvd  
To: Approximately 400' east of CR 117  
Length: 1.18 miles  
County: Williamson  
City: Round Rock

**PROJECT STATEMENT**

The roadway improvements for CR 112 from A.W. Grimes Blvd to approximately 400' east of CR 117 are to widen this 1.18-mile section from a two-lane roadway to six-lane divided roadway and add pedestrian facilities. The City's Transportation Master Plan indicates this section of CR 112 should be enhanced to six-lanes.

This supplemental is for additional design work to address 95% comments, developer coordination and continued utility coordination.

The additional work required is described below according to each task to be performed.

**PROJECT MANAGEMENT**

**A. Managing Contracted Services (Project Management)**

- a. **Coordination:** The ENGINEER shall continue coordination with the CITY beyond the original scope of the contract related to additional design comments, developer coordination, future utilities, waterline easements, and utility relocations along the project for an additional 6 months.
- b. **Subconsultant Coordination:** The ENGINEER shall continue coordination with subconsultants (Survey/SUE) beyond the original scope of the contract related to the waterline easement and ongoing utility relocations.
- c. **Project Management and Progress Report:** The ENGINEER shall continue to meet with the internal design team and coordinate plan modifications across design disciplines for additional design

modifications. The ENGINEER shall continue to prepare monthly progress reports with invoicing to the City for review and approval for an additional 6 months.

### **ROADWAY DESIGN**

- A. **Intersection Layouts:** The ENGINEER shall prepare additional intersection layouts in conjunction with developer coordination for access at Colony Drive and Ekvall Drive and update other design sheets accordingly to include the intersection details.

### **SIGNING, PAVEMENT MARKINGS AND TRAFFIC SIGNAL**

- B. **Signal Upgrade:** The ENGINEER will update the existing signal detection AN construction plan details at A.W. Grimes and CR 112 per comments received at the 95% submittal. Signal detection modification was not part of the original scope of work.

### **MISCELLANEOUS**

- A. **Plan Updates for Additional Design Changes:** The ENGINEER shall update the Traffic Control, Drainage, Signing and Pavement Markings, Utility, and Erosion Control plans to accommodate the new intersecting streets (Colony Drive and Ekvall Drive). The ENGINEER shall also develop additional design sheets including traffic signs and summaries, cross street plan and profile layouts, culvert hydraulic sheets, 100-yr hydraulic calculation sheets, and pipe/box connection details.
- B. **Utility Coordination:** The ENGINEER shall continue to attend monthly utility coordination meetings with the City and private utility providers. The ENGINEER shall review design relocation plans, attend site visits to coordinate/verify relocations, and attend separate design coordination meetings to mitigate impacts with the proposed design.
- C. **Developer Coordination and Utility Accommodations:** The ENGINEER shall coordinate improvements to adjacent design projects to address access management and connection of future utilities across the CR 112 project. The engineer shall prepare conduit and utility casing details and update design drawings, quantities, and specifications to include conduit for future utilities.
- D. **Update Standards, Summary of Quantities, and Cost Estimates:** The ENGINEER shall update relative roadway, drainage, signing and striping standards and associated plan details or bid items following most recent City or TxDOT standards. The engineer shall update the summary of quantity sheets and cost estimate to include the latest design modifications and update the construction cost estimate to include the latest bid items.

## **CONSTRUCTION PHASE SERVICES**

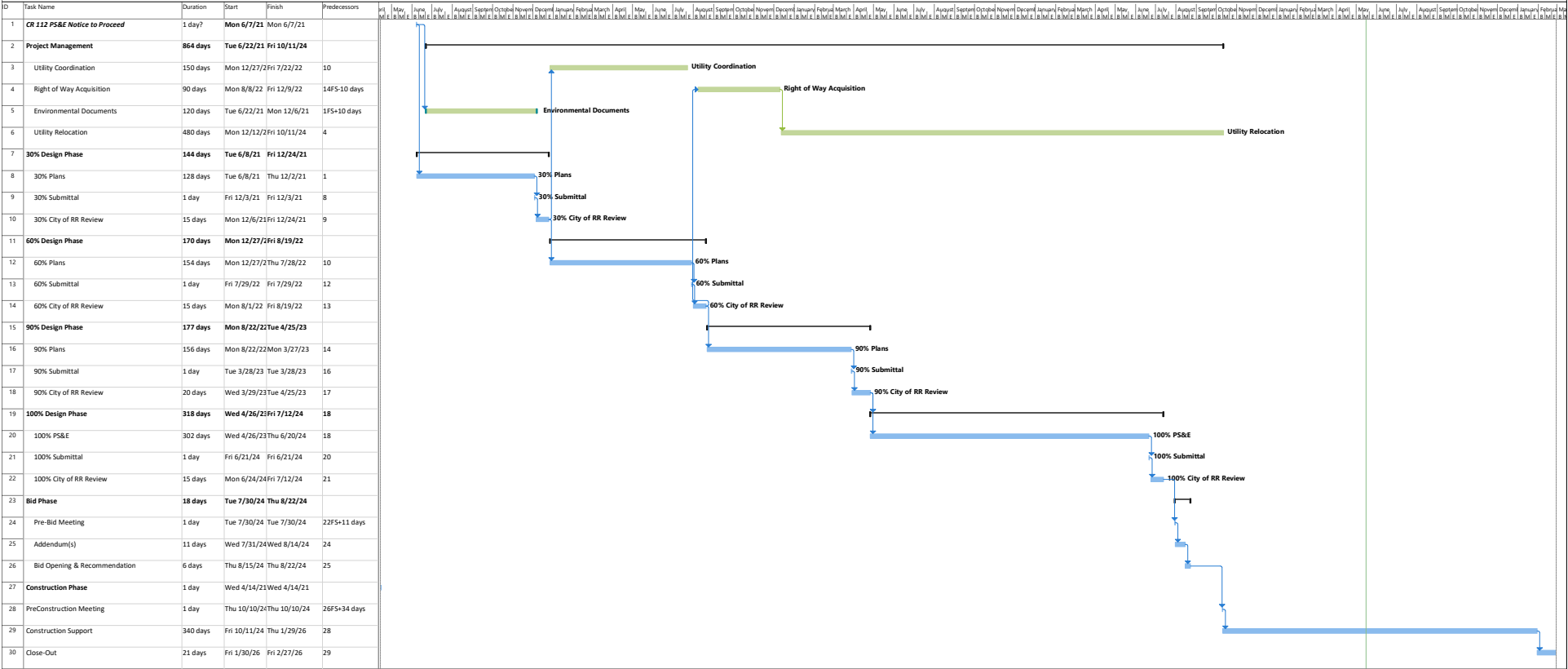
- A. Construction Meetings:** The ENGINEER attend in-person weekly construction meetings at the onset of construction and transition to bi-weekly meetings as construction progresses. Anticipated additional twenty-six (26) construction meetings for the duration of the project.
- B. Notice of Design Changes:** The ENGINEER shall prepare additional design details for requested design modifications from the City or Contractor required to mitigate conflicts or incorporate new design items into the project. Anticipate an additional five (5) notices or request for design changes.
- C. Utility Review and Verification:** The ENGINEER shall evaluate additional utility relocation design and confirm locations for new utilities being constructed within the project limits.
- D. Pay Application Review:** The ENGINEER shall evaluate contractor pay applications in accordance with work completed or stockpiled on site for each monthly billing period.

**ADDENDUM TO EXHIBIT C**  
**Work Schedule**

Attached Behind This Page



Exhibit C - Project Schedule



**ADDENDUM TO EXHIBIT D**  
**Fee Schedule**

Attached Behind This Page

**EXHIBIT D**  
**Project: CR 112 Final Design**  
**Fee Schedule - Lump Sum**  
**Firm Provider: Tetra Tech (RPS)**

6/27/2025

Work Task	Principal	Senior Project Manager	Senior Project Engineer	Project Engineer	Associate Engineer III	Senior Designer	Admin/ Clerical	Total Hours	No of DWGS	Labor hrs per sheet	Total Amount
<b>Project Management</b>											
Coordination with City	2	12	8					22			\$5,710.00
Subconsultant Coordination, Deliverables Review and Invoices		4	4		4			12			\$2,560.00
Progress Reports and Updates		6					6	12			\$2,280.00
										Subtotal:	\$10,550.00
<b>Roadway Design</b>											
Roadway Design											
Intersection Layouts (Update all sheets)		2	24	12	18			56	2	28	\$10,280.00
										Subtotal:	\$10,280.00
<b>Signing, Pavement Markings, Signalization (Permanent)</b>											
Traffic Signal											
Traffic Signal Design Modification (1 Location)		2		12	12			26	2	13	\$4,160.00
										Subtotal:	\$4,160.00
<b>Miscellaneous</b>											
Plan Updates for Additional Design Changes		4	16	4	12			36	2	18	\$6,960.00
Utility Coordination		4	18		8			30	2	15	\$6,200.00
Developer Coordination and Utility Accommodations		2	16	4	12			34	1	34	\$6,400.00
Update Standards, Summary of Quantities, and Cost Estimates		2	8	2	8			20	3	7	\$3,760.00
										Subtotal:	\$23,320.00
<b>Construction Phase Services</b>											
Construction Meetings (26 Additional)		12	78		24			114			\$23,880.00
Notice of Design Changes		8	18	18	24	18		86			\$15,320.00
Utility Review and Verification		8	18		18	18		62			\$11,600.00
Pay Application Review			16					16			\$3,520.00
										Subtotal:	\$54,320.00
HOURS SUB-TOTALS	2	66	224	52	140	36	6	526			
Rate	\$295.00	\$280.00	\$220.00	\$160.00	\$140.00	\$160.00	\$100.00				
<b>SUBTOTAL</b>	\$590.00	\$18,480.00	\$49,280.00	\$8,320.00	\$19,600.00	\$5,760.00	\$600.00	\$102,630.00			

DESCRIPTION								TOTAL COSTS BY FC
<b>Project Management</b>								\$ 10,550.00
<b>Roadway Design</b>								\$ 10,280.00
<b>Signing, Pavement Markings, Signalization (Permanent)</b>								\$ 4,160.00
<b>Miscellaneous</b>								\$ 23,320.00
<b>Construction Phase Services</b>								\$ 54,320.00
<b>SUBTOTAL LABOR EXPENSES</b>								\$ 102,630.00
<b>OTHER DIRECT EXPENSES</b>	# OF UNITS	COST / UNIT						
Mileage (number x current state rate)	1,560	\$ 0.70						\$1,092.00
<b>SUBTOTAL DIRECT EXPENSES</b>								\$1,092.00

<b>SUMMARY</b>	
TOTAL COSTS	\$ 102,630.00
TOTAL EXPENSES	\$ 1,092.00
<b>GRAND TOTAL</b>	<b>\$ 103,722.00</b>