

FIRM: LJA ENGINEERING (“Engineer”)
ADDRESS: 2700 La Frontera Boulevard, Suite 150, Round Rock, TX 78681
PROJECT: Red Bud Lane South

1

III.

Article 4, Compensation and Exhibit D, Fee Schedule shall be amended by increasing by \$247,003.00 the lump sum amount payable under the Contract for a total of \$2,394,798.74, as shown by the attached Addendum to Exhibit D.

IN WITNESS WHEREOF, the City and the Engineer have executed this Supplemental Contract in duplicate.

[signature pages follow]

LJA ENGINEERING

By: Kenneth G. Schrock
Kenneth G. Schrock

7/25/2023
Date

CITY OF ROUND ROCK

APPROVED AS TO FORM:

By: _____
Craig Morgan, Mayor

Stephanie L. Sandre, City Attorney

Date

ADDENDUM TO EXHIBIT A
City Services

1. City of Round Rock will provide any as-built drawings for developments along Red Bud Lane based on availability.
2. City shall any existing CADD/GIS files and pertinent as-built plans of the roadway, storm sewer, and water and wastewater utilities in the area.
3. City of Round Rock will provide any available traffic information to aid in pavement design.
4. The City will provide timely reviews in conjunction with the agreed upon schedule.
5. City of Round Rock will provide all City permits necessary.
6. The City will host monthly utility coordination meetings.
7. The City will provide payment for necessary permitting fees including TCEQ

ADDENDUM TO EXHIBIT B

Engineering Services

Roadway: Red Bud Lane
County: Williamson
Limits: **PS&E:** from Gattis School Road to Forest Ridge Blvd./Evergreen Dr.

General Work Description: Develop 90% and 100% plans, specifications, and estimates (PS&E) and topographic survey of proposed reuse line along with drainage, traffic control, and utility coordination revisions and additional services due to the addition of proposed City utilities to the Red Bud Lane South Improvement Project. Work to also include the extension of Doris Lane improvements approximately 200' from proposed Red Bud Lane to the east.

Summary:

- Design 4,000 LF of reuse line (8-in) upsized to 12 inch from 82+00 to 121+00.
- Extend proposed 24" water line to connect to exist 36" water line. (400' north of CR123) from 131+50 to 135+00.
- Storm sewer alignment and traffic control plan adjustments to accommodate utilities added to the project (summarized below).
 - Proposed 4,000 LF of reuse line (SWA #3)
 - Extension of 24" Water Line (SWA #3)
 - 4,830 LF of water line (16" and 12") relocated and extend to CR 123 (SWA #2)
 - Addition of PRV Vault at Forest Creek (SWA #2)
 - 5,900 LF of force main (6" and 12") relocated and extend to CR 123 (SWA #2)
 - 16" waterline converted to a reuse line from Forest Creek Drive to CR 123 (SWA #2)
- Traffic Control adjustments to accommodate utilities (summarized above).
- Additional utility coordination to accommodate redesign and longer schedule. (summarized above).
- Extend Doris Lane 200' east of Red Bud Lane to include roadway, drainage and pedestrian improvements
-

FC 130.3 - UTILITY COORDINATION

Provide utility coordination services through construction for relocation and additional utility coordination efforts due to the addition of multiple proposed public utilities added to the project.

- Assist City in Utility Coordination
 - Attend CORR monthly coordination meetings, up to 12 meetings
 - Contact utilities monthly for relocation design status updates

- Provide utilities recommended relocation alignments to assure accommodation of all conflicts due to new conflicts
- Provide utilities with roadway PDF plans, cadd files and updates to PDFs and cadd files
- Discuss proposed relocation alignment assignments with each utility in conflict
- Provide updates to the city and roadway design teams as needed
- Update Utility conflict matrix
- Update the utility relocation schedule
- Provide conflict services during relocation construction to address field issues

FC 145 - PROJECT MANAGEMENT AND COMMUNICATION PLAN

- Meetings and Team Coordination
 - Team Coordination Meetings - Hold staff/team/discipline meetings at the Engineers office to coordinate the proposed utility and traffic signal design.
- Invoicing and Contract Document Coordination
 - Prepare Supplemental work authorization contract documents
- Produce Project Scheduling
 - Update design schedule in Microsoft Project format for approval by the City indicating tasks, milestones, major meetings, and reviews. Update schedule with each milestone deliverable.
- Submittals and QA/QC
 - QA/QC of all documents for additional work prior to milestone submittals (90%, 100%). Detailed Check Review for all designs, Inter-discipline coordination review, detailed plan and construction reviews.
 - QA/QC of additional Utility submittals added to project.
 - Prepare Submittals for City Oversight Reviews.
 - Document control for project on all submittals, reviews, comments, and any other project files.

FC 150 - TOPOGRAPHICAL & BOUNDARY SURVEY

1. General

LIMITS: Supplemental topographical ground surveying for Red Bud Lane due to the water line alignment location from Evergreen Dr to 36" tie in point from 120+00 to 135+00 and manhole data from Doris Lane to south side of fire house. Supplemental topographic ground surveying for the extension of Doris Lane improvements approximately 300' x 50' within the existing ROW along Doris Lane.

- A. Surveys provided will be in accordance with the "Texas State Board of Land Surveying" and the applicable City of Round Rock regulations.

FC 160 – ROADWAY – DORIS LANE

Roadway Design: The Engineer shall use Bentley's 3D design technology in the design and preparation of the roadway plan sheets to incorporate the Doris Lane roadway, drainage and sidewalk improvements. Improvements will include a 3 lane section extended approximately 200' east of proposed Red Bud Lane, 6' sidewalk, and any necessary drainage improvements required. The engineer shall prepare and adjust all necessary plan sheets affected by improvements including but not limited to:

1. Roadway Plan and Profiles
2. Drainage Plan and Profiles
3. Drainage Area Maps
4. Signing and Striping
5. Sidewalk Details
6. Traffic Control Plan
7. Cross sections and Typical Sections
8. Quantity Summaries
9. Earthwork

FC 161 - DRAINAGE ADJUSTMENTS

Storm sewer revisions due to the addition of multiple proposed public utilities added to the project.

Storm Drains: Revisions to storm sewer design and resulting sheets include:

- Relocating curb/drop inlets, and manholes
- Revising drainage areas and calculations based on new inlet locations
- Relocating storm sewer trunk lines and laterals
- Redesigning storm sewer system to verify sizes, slopes, hydraulic grade lines and velocities.
- Updating drainage plan and profile sheets
- Updating drainage area maps
- Updating storm sewer lateral profile sheets
- Updating all hydraulic data sheets
- Updating resulting quantity summaries.

FC 163.10 - UTILITY DESIGN

The Engineer will develop the following plan sheets in accordance with City of Round Rocks' guidelines for the addition of a proposed reuse line from 82+00 to 121+00.

- Determine Reuse Alignment Relocation Placement, Limits of Improvements
- Prepare E&Q Sheet: Estimate and Quantity Data Sheet
- Prepare Reuse Layout / Horizontal Alignment Layout
- Prepare Reuse line Improvement Plan & Profile Sheets
- Prepare Connecting Tie-In Lines Plan and Profile
- Waterline Adjustments
- Extend 24-in water to tie to exist 36" water line (400' north of CR123) from 131+50 to 135+00.
- Prepare additional Construction Detail Sheets
- Submit reuse improvement plans to TCEQ for approval

Milestone Comment Resolution

- Update plans per TCEQ comments received from the 100% milestone review meetings.
- Deliverables
 - Construction Plan Submittals (90%, 100%)
 - Specifications Submittals (90%, 100%)
 - Electronic Graphics - provide the City an electronic deliverable of the plans (including standard drawings) submit both PDF & Microstation Format
 - Submittals – 90%, and 100% submittals - Comments and revisions requested at the review meetings shall be incorporated into the plans for the subsequent submittal.

FC 163.3 - TRAFFIC CONTROL & EROSION CONTROL

Traffic Control Plan revisions due to the addition of multiple proposed public utilities added to the project.

Traffic Control Revisions to multiple phases and resulting sheets include:

- Revise TCP Narrative
- Revise Phase 1 and Layouts
- Revise Phase 2 and Layouts
- Revise Phase 3 and Layouts
- Intersection phasing details

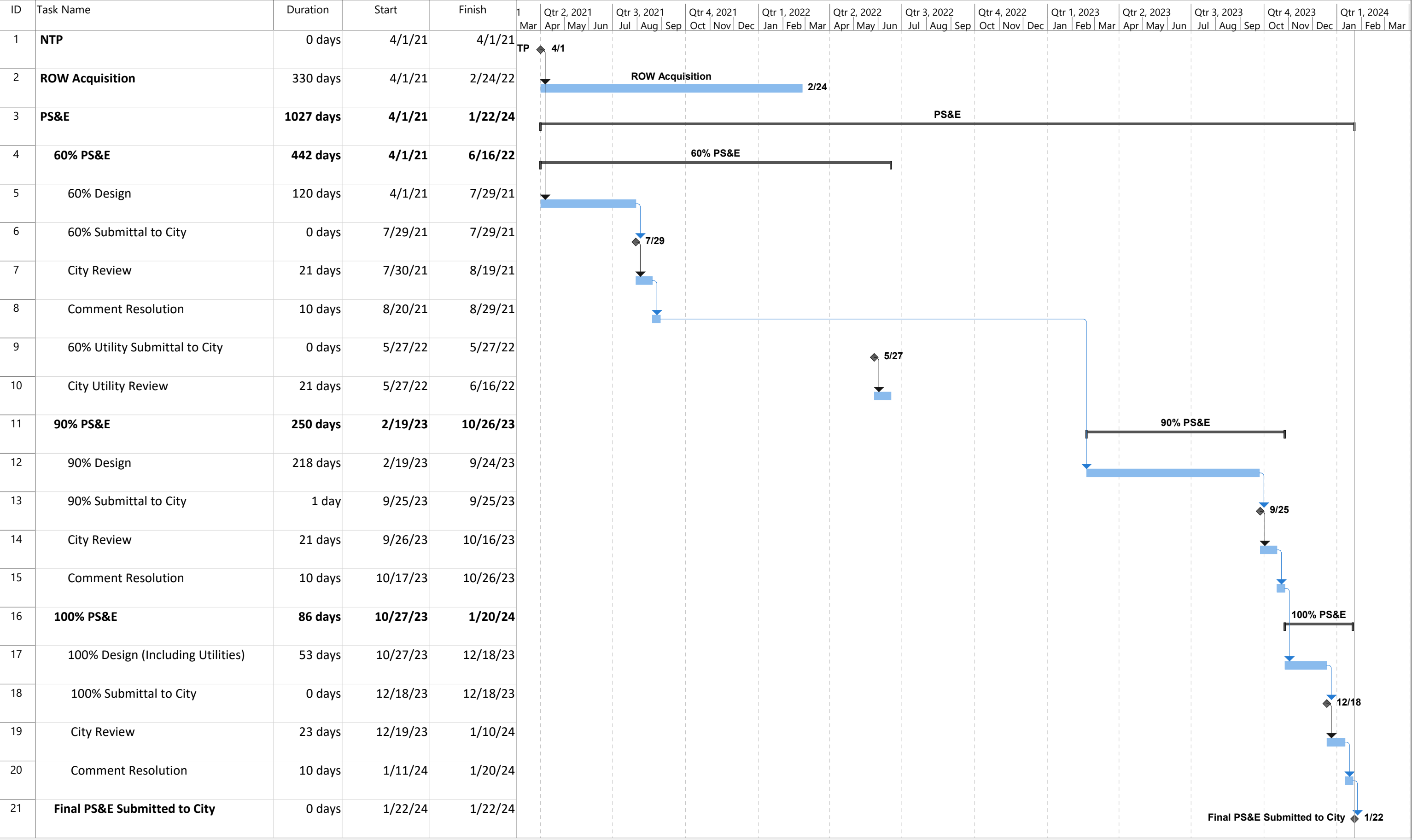
309.2 - Construction Phase Services

Supplemental construction phase services include additional services required due to the addition of several public utilities to be constructed with this project. During construction the engineer shall:

- Review and approve submittals/shop drawings as received
- Answer RFIs (5)
- Prepare Design Change Notifications as necessary
- Document, coordinate, and rectify utility conflicts during construction

ADDENDUM TO EXHIBIT C
Work Schedule

Attached Behind This Page



ADDENDUM TO EXHIBIT D
Fee Schedule

Attached Behind This Page

EXHIBIT D**FEE SCHEDULE - Supplemental Design Services for Plans, Specifications and Estimates****PROJECT NAME: Red Bud Lane SWA#3 - Utility, Drainage Improvements, Doris Lane Extension****PRIME PROVIDER NAME: LJA Engineering, Inc.**

FEE SUMMARY		
Function Code	Task	Fee
130.3	Utility Coordination	\$ 31,400.00
145	Project Management	\$ 18,400.00
150	Topographic Survey	\$ 13,705.00
160	Roadway - Doris Lane	\$ 15,010.00
161	Drainage	\$ 30,380.00
163.1	Utility Design	\$ 80,330.00
163.3	TCP	\$ 21,530.00
309.2	Construction Phase Serv.	\$ 36,248.00
Grand Total:		\$ 247,003.00

EXHIBIT D**FEE SCHEDULE - Supplemental Design Services for Plans, Specifications and Estimates****PROJECT NAME: Red Bud Lane SWA#3 - Utility, Drainage Improvements, Doris Lane Extension****PRIME PROVIDER NAME: LJA Engineering, Inc.**

FEE SUMMARY				
Function Code	Task	Utility Betterment	Transportation Conflicts	Fee
130.3	Utility Coordination	\$ 15,700.00	\$ 15,700.00	\$ 31,400.00
145	Project Management	\$ 9,200.00	\$ 9,200.00	\$ 18,400.00
150	Topographic Survey	\$ 9,940.00	\$ 3,765.00	\$ 13,705.00
160	Roadway - Doris Lane		\$ 15,010.00	\$ 15,010.00
161	Drainage	\$ 15,190.00	\$ 15,190.00	\$ 30,380.00
163.1	Utility Design	\$ 80,330.00		\$ 80,330.00
163.3	TCP	\$ 10,765.00	\$ 10,765.00	\$ 21,530.00
309.2	Construction Phase Serv.		\$ 36,248.00	\$ 36,248.00
Grand Total:		\$ 141,125.00	\$ 105,878.00	\$ 247,003.00

RED BUD LANE FEE ESTIMATE

EXHIBIT D

FEE SCHEDULE - Supplemental Design Services for Plans, Specifications and Estimates

PROJECT NAME: Red Bud Lane SWA#3 - Utility, Drainage Improvements, Doris Lane Extension

PRIME PROVIDER NAME: LJA Engineering, Inc.

Date: 6/28/2023

RED BUD LANE PROJECT

TASK DESCRIPTION	Senior Project Manager	Senior Engineer/ Planner	Project Engineer	E.I.T.	Senior Utility Coordinator	Utility Coordinator	Senior Engineering Tech	CADD Operator	GIS Analyst/ Cartography	GIS Technician	Admin	Total
FC 130.3 - Utility Coordination												
Attend and prepare information for Util Coord Meetings					16.0	16.0						32.0
Contact Utility companies monthly					8.0	24.0						32.0
Provide recommended alignments					16.0	16.0						32.0
Provide utilities with updated roadway plans/cadd files						12.0						12.0
Provide updates to City					16.0							16.0
Update utility conflict matrix					24.0	8.0						32.0
Update utility relocation schedule					16.0							16.0
Provide conflict services during relocation construction					24.0	24.0						48.0
HOURS SUB-TOTALS	0.0	0.0	0.0	0.0	120.0	100.0	0.0	0.0	0.0	0.0	0.0	220.0
LABOR RATE PER HOUR	\$230	\$180	\$160	\$135	\$160	\$122	\$120	\$85	\$110	\$95	\$70	
SUBTOTAL	\$0	\$0	\$0	\$0	\$19,200	\$12,200	\$0	\$0	\$0	\$0	\$0	\$31,400

TASK DESCRIPTION	Senior Project Manager	Senior Engineer/ Planner	Project Engineer	E.I.T.	Senior Utility Coordinator	Utility Coordinator	Senior Engineering Tech	CADD Operator	GIS Analyst/ Cartography	GIS Technician	Admin	Total
FC 145 - Project Management												
Team Coordination Meetings	8.0	8.0	8.0									24.0
Project Schedule	8.0											8.0
Invoicing and Document Control	12.0										8.0	20.0
Prepare Submittals and QA/QC	16.0	16.0	8.0								12.0	52.0
HOURS SUB-TOTALS	44.0	24.0	16.0	0.0	0.0	0.0	0.0	0.0	0.0	0.0	20.0	104.0
LABOR RATE PER HOUR	\$230	\$180	\$160	\$135	\$160	\$122	\$120	\$85	\$110	\$95	\$70	
SUBTOTAL	\$10,120	\$4,320	\$2,560	\$0	\$0	\$0	\$0	\$0	\$0	\$0	\$1,400	\$18,400

FC 150 - Topographical & Boundary Survey

Survey (see LJA's Fee)												\$13,705
TASK DESCRIPTION	Senior Project Manager	Senior Engineer/ Planner	Project Engineer	E.I.T.	Senior Utility Coordinator	Utility Coordinator	Senior Engineering Tech	CADD Operator	GIS Analyst/ Cartography	GIS Technician	Admin	Total

FC 160 Roadway - Doris Lane

1. Roadway Plan and Profiles		2.0	8.0	16.0								26.0
2. Drainage Plan and Profiles		1.0	8.0	16.0								25.0
3. Drainage Area Maps		1.0	2.0	2.0								5.0
4. Signing and Striping		1.0	4.0	4.0								9.0
5. Sidewalk Details		1.0	4.0	2.0								7.0
6. Traffic Control Plan/Erosion control		2.0	8.0									10.0
7. Cross sections and Typical Sections		1.0	8.0									9.0
8. Quantity Summaries		1.0	2.0	2.0								5.0
9. Earthwork		1.0	2.0									3.0
HOURS SUB-TOTALS	0.0	11.0	46.0	42.0	0.0	0.0	0.0	0.0	0.0	0.0	0.0	99.0
LABOR RATE PER HOUR	\$230	\$180	\$160	\$135	\$160	\$122	\$120	\$85	\$110	\$95	\$70	
SUBTOTAL	\$0	\$1,980	\$7,360	\$5,670	\$0	\$0	\$0	\$0	\$0	\$0	\$0	\$15,010

RED BUD LANE FEE ESTIMATE

TASK DESCRIPTION		Senior Project Manager	Senior Engineer/ Planner	Project Engineer	E.I.T.	Senior Utility Coordinator	Utility Coordinator	Senior Engineering Tech	CADD Operator	GIS Analyst/ Cartography	GIS Technician	Admin	Total
FC 161 - PS&E Drainage Design													
	Revise Interior Drainage Areas			4.0	16.0								20.0
	Place Inlets			8.0	24.0								32.0
	Design Storm Sewer System			8.0	24.0								32.0
	Drainage Area Map Sheets			2.0	8.0				24.0				34.0
	Drainage Plan & Profile Sheets			4.0	24.0				40.0				68.0
	Storm Sewer Lateral Profile Sheets			2.0	8.0				16.0				26.0
	Hydraulic Data Sheets – Drainage Areas			2.0	4.0								6.0
	Hydraulic Data Sheets – Inlets			2.0	4.0								6.0
	Hydraulic Data Sheets – Links			2.0	4.0								6.0
	Quantity Summaries			2.0	16.0								18.0
HOURS SUB-TOTALS		0.0	0.0	36.0	132.0	0.0	0.0	0.0	80.0	0.0	0.0	0.0	248.0
LABOR RATE PER HOUR		\$230	\$180	\$160	\$135	\$160	\$122	\$120	\$85	\$110	\$95	\$70	
SUBTOTAL		\$0	\$0	\$5,760	\$17,820	\$0	\$0	\$0	\$6,800	\$0	\$0	\$0	\$30,380
TASK DESCRIPTION		Senior Project Manager	Senior Engineer/ Planner	Project Engineer	E.I.T.	Senior Utility Coordinator	Utility Coordinator	Senior Engineering Tech	CADD Operator	GIS Analyst/ Cartography	GIS Technician	Admin	Total
FC 163.10 - Utility Design													
163.10.1	Reuse Alignment Placement		8.0		40.0								48.0
163.10.2	Reuse Horizontal Alignment Layout sheet		5.0	6.0	24.0								35.0
163.10.3	Reuse E&Q Sheet				8.0								8.0
163.10.4	Reuse Plan and profile sheets	5.0	30.0	70.0	225.0								330.0
163.10.5	Waterline Adjustments		6.0		40.0								46.0
163.10.6	Tie-In Lines Plan and Profiles		6.0		24.0								30.0
163.10.7	Respond to/Address City 90% comments		2.0	6.0	10.0								18.0
163.10.8	Respond to/Address City 100% comments		2.0	6.0	10.0								18.0
163.10.9	Respond to/Address TCEQ comments		2.0	2.0	10.0								14.0
163.10.10	Reuse Plan Submission to TCEQ		1.0	1.0	5.0								7.0
HOURS SUB-TOTALS		5.0	62.0	91.0	396.0	0.0	0.0	0.0	0.0	0.0	0.0	0.0	554.0
LABOR RATE PER HOUR		\$230	\$180	\$160	\$135	\$160	\$122	\$120	\$85	\$110	\$95	\$70	
SUBTOTAL		\$1,150	\$11,160	\$14,560	\$53,460	\$0	\$0	\$0	\$0	\$0	\$0	\$0	\$80,330
TASK DESCRIPTION		Senior Project Manager	Senior Engineer/ Planner	Project Engineer	E.I.T.	Senior Utility Coordinator	Utility Coordinator	Senior Engineering Tech	CADD Operator	GIS Analyst/ Cartography	GIS Technician	Admin	Total
FC 163.3 - Traffic Control Plan													
	TCP Narrative - Revisions		8.0		8.0								16.0
	TCP Phase 1 Layout- Revisions		4.0	16.0	16.0								36.0
	TCP Phase 2 Layout- Revisions		4.0	16.0	16.0								36.0
	TCP Phase 3 Layout- Revisions	5.0	4.0	16.0	16.0								41.0
	Intersection Phasing Details - Revisions		2.0	4.0	4.0								10.0
HOURS SUB-TOTALS		5.0	22.0	52.0	60.0	0.0	0.0	0.0	0.0	0.0	0.0	0.0	139.0
LABOR RATE PER HOUR		\$230	\$180	\$160	\$135	\$160	\$122	\$120	\$85	\$110	\$95	\$70	
SUBTOTAL		\$1,150	\$3,960	\$8,320	\$8,100	\$0	\$0	\$0	\$0	\$0	\$0	\$0	\$21,530

RED BUD LANE FEE ESTIMATE

TASK DESCRIPTION	Senior Project Manager	Senior Engineer/ Planner	Project Engineer	E.I.T.	Senior Utility Coordinator	Utility Coordinator	Senior Engineering Tech	CADD Operator	GIS Analyst/ Cartography	GIS Technician	Admin	Total
309.2 - Construction Phase Services												
Review and approve shop drawings		8.0	20.0	32.0								60.0
Answer RFIs		8.0	16.0	16.0								40.0
Prepare Design Change Notifications as necessary		4.0	8.0	8.0								20.0
Assist with utility conflicts during construction					64.0	64.0						128.0
												0.0
HOURS SUB-TOTALS	0.0	20.0	44.0	56.0	64.0	64.0	0.0	0.0	0.0	0.0	0.0	248.0
LABOR RATE PER HOUR	\$230	\$180	\$160	\$135	\$160	\$122	\$120	\$85	\$110	\$95	\$70	
SUBTOTAL	\$0	\$3,600	\$7,040	\$7,560	\$10,240	\$7,808	\$0	\$0	\$0	\$0	\$0	\$36,248
LJA ENGINEERING, INC. TOTAL												\$247,003.00

Red Bud - Cedar Park LJA SURVEY											
TASK DESCRIPTION	Sr. Project Manager RPLS	Project Manager RPLS	Sr. Project Surveyor	Project Surveyor	Survey Technician	Survey Draftsman	Two Man Survey Crew	Clerical	Hours Total	Total Lump Sum	
	195.00	160.00	140.00	125.00	105.00	90.00	155.00	70.00			
	HOURS	HOURS	HOURS	HOURS	HOURS	HOURS	HOURS	HOURS	HOURS		
TASK 2 - TOPOGRAPHICAL SURVEY - WATER LINE EXTENSION											
Task 2.1 - RPLS/Proj. Task Management	1							1	2		
Task 2.2 -Secondary Control (2 Total)						2	6		4		
Task 2.3 - Design Survey (drainage, visible utilities, bridge scans, utility detail sketches)					1	10	20		31		
Task 2.4 - ROW/Boundary Line Retracement Survey						6	4		10		
Task 2.5 - Level D, C and B SUE- Mapping	1				2	12	10		25		
Task 2.6 - QA/QC Review and Delivery		1							2		
TASK 2 TOTAL HOURS	2.0	1.0	0.0	0.0	4.0	30.0	40.0	1.0	78.0		
TASK 2 TOTAL FEE	\$390	\$160	\$0	\$0	\$420	\$2,700	\$6,200	\$70	\$9,940	\$0.00	
Red Bud - Cedar Park LJA SURVEY											
TASK DESCRIPTION	Sr. Project Manager RPLS	Project Manager RPLS	Sr. Project Surveyor	Project Surveyor	Survey Technician	Survey Draftsman	Two Man Survey Crew	Clerical	Hours Total	Total Lump Sum	
	195.00	160.00	140.00	125.00	105.00	90.00	155.00	70.00			
	HOURS	HOURS	HOURS	HOURS	HOURS	HOURS	HOURS	HOURS	HOURS		
TASK 2 - TOPOGRAPHICAL SURVEY - DORIS LANE EXTENSION											
Task 2.1 - RPLS/Proj. Task Management	1							1	2		
Task 2.2 -Secondary Control (2 Total)									4		
Task 2.3 - Design Survey (drainage, visible utilities, bridge scans, utility detail sketches)					3	10	12		25		
Task 2.4 - ROW/Boundary Line Retracement Survey									0		
Task 2.5 - Level D, C and B SUE- Mapping									0		
Task 2.6 - QA/QC Review and Delivery		2			1				3		
TASK 2 TOTAL HOURS	1.0	2.0	0.0	0.0	4.0	10.0	12.0	1.0	30.0		
TASK 2 TOTAL FEE	\$195	\$320	\$0	\$0	\$420	\$900	\$1,860	\$70	\$3,765	\$0.00	
GRAND TOTAL											\$3,765.00