

EXHIBIT

"A"

STATE OF TEXAS

§

§

COUNTY OF WILLIAMSON

§

**SUPPLEMENTAL CONTRACT NO. 2
TO CONTRACT FOR ENGINEERING SERVICES**

FIRM: LJA ENGINEERING ("Engineer")
ADDRESS: 2700 La Frontera Boulevard, Suite 150, Round Rock, TX 78681
PROJECT: Red Bud Lane South

This Supplemental Contract No. 2 to Contract for Engineering Services is made by and between the City of Round Rock, Texas, hereinafter called the "City" and LJA Engineering, hereinafter called the "Engineer".

WHEREAS, the City and Engineer executed a Contract for Engineering Services, hereinafter called the "Contract", on the 26th day of September, 2019 for the Red Bud Lane South Project in the amount of \$550,863.65; and

WHEREAS, the City and Engineer executed Supplemental Contract No. 1 on April 8, 2021 to amend the scope of services and to increase the compensation by \$1,370,142.09 to a total of \$1,921,005.74; and

WHEREAS, it has become necessary to amend the Contract to modify the provisions for the scope of services and to increase the compensation by \$226,790.00 to a total of \$2,147,795.74;

NOW THEREFORE, premises considered, the City and the Engineer agree that said Contract is amended as follows:

I.

Article 1, City Services and Exhibit A, City Services shall be amended as set forth in the attached Addendum To Exhibit A.

II.

Article 2, Engineering Services and Exhibit B, Engineering Services shall be amended as set forth in the attached Addendum to Exhibit B. Exhibit C, Work Schedule shall be amended as set forth in the attached Addendum to Exhibit C.

III.

Article 4, Compensation and Exhibit D, Fee Schedule shall be amended by increasing by \$226,790.00 the lump sum amount payable under the Contract for a total of \$2,147,795.74, as shown by the attached Addendum to Exhibit D.

IN WITNESS WHEREOF, the City and the Engineer have executed this Supplemental Contract in duplicate.

[signature pages follow]

LJA ENGINEERING

By: Kenneth G. Schrock
Kenneth G. Schrock

5/4/2022
Date

CITY OF ROUND ROCK

APPROVED AS TO FORM:

By: _____
Craig Morgan, Mayor

Stephan L. Sheets, City Attorney

Date

ADDENDUM TO EXHIBIT A

City Services

1. City of Round Rock will provide any as-built drawings for developments along Red Bud Lane based on availability.
2. City shall any existing CADD/GIS files and pertinent as-built plans of the roadway, storm sewer, and water and wastewater utilities in the area.
3. City of Round Rock will provide any available traffic information to aid in pavement design.
4. The City will provide timely reviews in conjunction with the agreed upon schedule.
5. City of Round Rock will provide all City permits necessary.
6. The City will host monthly utility coordination meetings.
7. The City will provide payment for necessary permitting fees including TCEQ.

ADDENDUM TO EXHIBIT B

Engineering Services

Roadway: Red Bud Lane
County: Williamson
Limits: **PS&E:** from Gattis School Road to Forest Ridge Blvd./Evergreen Dr.

General Work Description: Develop 60%, 90% and 100% plans, specifications, and estimates (PS&E) of utility improvements to develop the Red Bud Lane Improvement Project. Add a new traffic signal at the intersection of Evergreen Dr./Forrest Ridge Blvd. and Red Bud Lane. After 60% utility conflict analysis, it was determined that the following improvements would be required to add to the project:

South Red Bud Lane (Gattis School to Forest Creek)	Design	Relocate 16" Waterline	Relocate the 16" waterline that is currently in conflict due to the roadway being lowered. (4,000ft)
		Relocate PRV Vault	Relocate the PRV Vault at Forest Creek that is in conflict with road.
		Add a PRV Vault	Add a second PRV vault for waterline heading south at Forest Creek.
		Relocate waterlines	Clean up waterlines at intersection of Red Bud and Forest Creek.
South Red Bud Lane (Forest Creek to Forest Ridge Blvd)	Design	8" Reuse	Relocate the existing 8" reuse line from Bobby Jones Way to Forest Ridge Blvd due to road conflicts.
		12" Forcemain	Relocate the existing 12" force main from Bobby Jones Way to Forest Ridge Blvd due to road conflicts.
		6" Forcemain	Relocate the existing 6" force main (several hundred feet)
Red Bud South (Forest Ridge Blvd to CR123)	Design	8" Reuse line	Install to CR123
		12" Forcemain	Install to CR123
		6" Forcemain	Install to CR123

Summary:

- 4,830 LF of water line (16" and 12") relocated
- 5,900 LF of force main (6" and 12") relocated
- 16" waterline will be converted to a reuse line from Forest Creek Drive to CR 123.

FC 145 - PROJECT MANAGEMENT AND COMMUNICATION PLAN

1. Meetings

- a. Team Coordination Meetings - Hold staff/team/discipline meetings at the Engineers office to coordinate the proposed utility and traffic signal design.
- 2. Invoicing and Contract Document Coordination
 - a. Prepare Supplemental work authorization contract documents
- 3. Produce Project Scheduling
 - a. Update design schedule in Microsoft Project format for approval by the City indicating tasks, milestones, major meetings, and reviews. Update schedule with each milestone deliverable.
- 4. Submittals and QA/QC
 - a. QA/QC of all documents for additional work prior to milestone submittals (60%, 90%, 100%). Detailed Check Review for all designs, Inter-discipline coordination review, detailed plan and construction reviews.
 - b. Prepare Submittals for City Oversight Reviews (60%, 90%, 100%)
 - c. Document control for project on all submittals, reviews, comments, and any other project files.

FC 162.3 - TRAFFIC SIGNALS

- ◆ LJA will prepare plans, general notes, specifications, and estimates for traffic signal construction. The plans will be prepared in compliance with the Texas Manual on Uniform Traffic Control Devices (TMUTCD) and TxDOT and City of Round Rock standards, as applicable.
- ◆ LJA will prepare traffic signal plans for the Red Bud Lane at Evergreen Dr. intersection.
- ◆ The following plan sheets will be prepared for each intersection:
 - General Notes
 - Summary of traffic signal quantities
 - Existing Conditions Layout
 - Proposed Traffic Signal Layout
 - Signal Phasing and Writing Charts
 - Proposed Traffic Signal Elevations
 - Proposed Intersection Pavement Marking, Signing, and Curb Ramp Layouts
 - Traffic signal pole, foundation, and electrical service standard sheets with quantities.
 - Select and prepare all applicable TxDOT standard sheets for traffic signal construction and traffic control during signal construction.

FC 163.10 - UTILITY DESIGN

The Engineer will perform:

- ◆ Site visits and field investigations as necessary to confirm field data
 - The Engineer will conduct two (2) site visits to verify data on utility locations, future alignments, conflicts, and other engineering aspects, and collect additional photography of existing conditions. For the purposes of estimating the effort for this task, it is assumed that the design team will conduct two (2) site visits using two (2) personnel.

The Engineer will develop the following plan sheets in accordance with City of Round Rocks' guidelines.

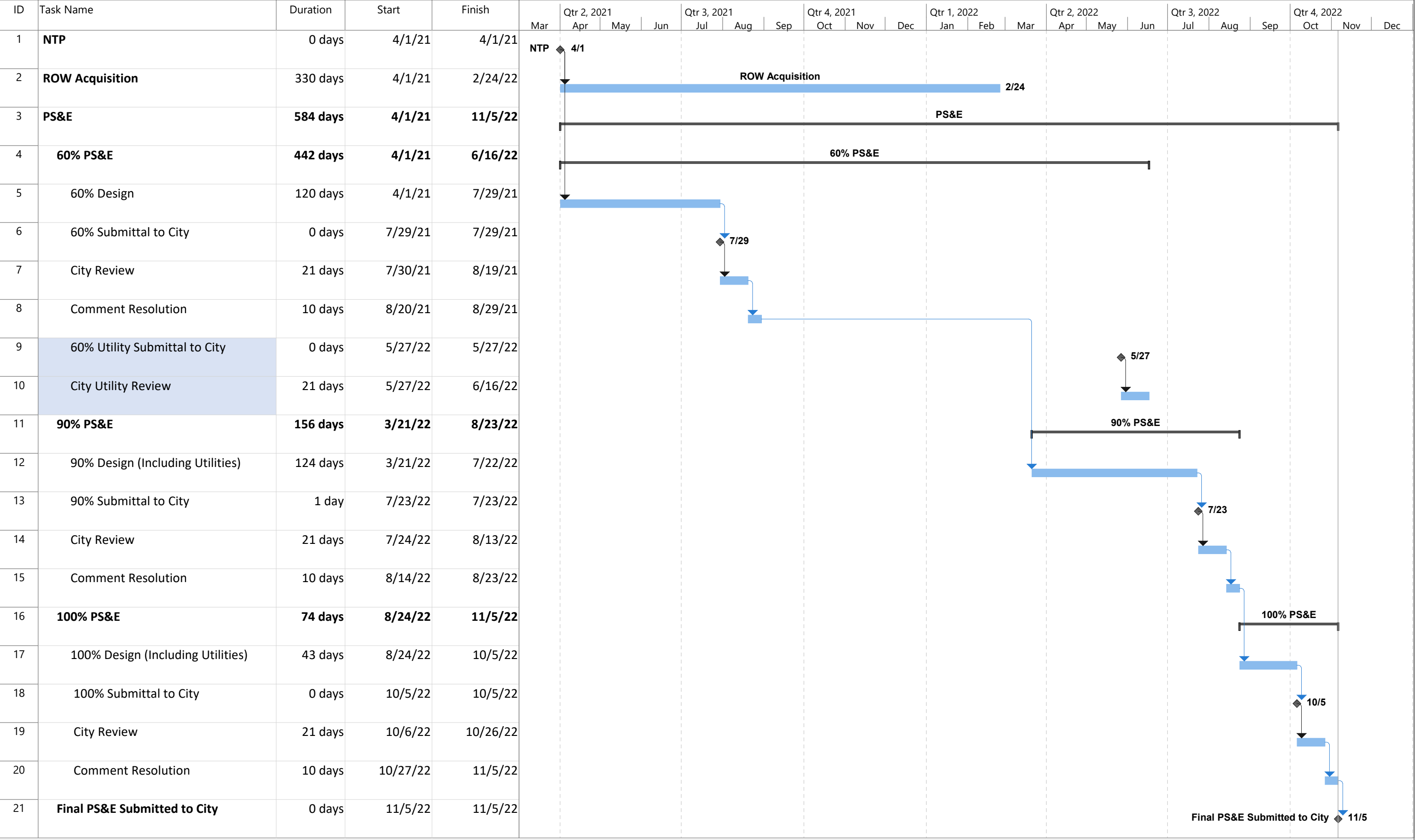
- ◆ Determine Preliminary Alignment Relocations and Appurtenance Placement, Limits of Improvements
- ◆ Prepare E&Q Sheet: Estimate and Quantity Data Sheet
- ◆ Prepare Project Layout / Horizontal Alignment Layout
- ◆ Prepare Waterline, Force Main, Reuse line Improvement Plan & Profile Sheets, and Reuse line Improvement Plan Sheets.
- ◆ Prepare Connecting Tie-In Lines Plan and Profile
- ◆ Waterline Adjustments
 - Clean up waterlines at intersection of Red Bud and Forest Creek.
- ◆ Prepare additional Construction Detail Sheets
- ◆ Pressure Reducing Valve Vault Location
 - Coordinate with city for size based on water model
- ◆ Prepare a list of force main and reuse Specifications complete with standard and special specifications with applicable special provisions needed for the project.
- ◆ Tabulate Quantities and Probable Construction Costs
 - The estimate will be in Microsoft Excel spreadsheet format, reflect Travis, Williamson County, and other recent local Average Unit Bid items and descriptions. The estimate will contain all major items that will likely be on the project
- ◆ Submit improvement plans to TCEQ for approval

Milestone Comment Resolution

- ◆ Update plans per City of Round Rock comments received from the 60%, 90% and 100% milestone review meetings.
- ◆ Deliverables
 - Exhibits for utility meetings
 - Route Layout
 - Construction Plan Submittals (60%, 90%, 100%)
 - Specifications Submittals (60%, 90%, 100%)
 - Engineers Opinion of Probable Construction Costs (60%, 90%, 100%)
 - Electronic Graphics - provide the City an electronic deliverable of the plans (including standard drawings) submit both PDF & Microstation Format
 - Submittals – 60%, 90%, and 100% submittals - Comments and revisions requested at the review meetings shall be incorporated into the plans for the subsequent submittal.

ADDENDUM TO EXHIBIT C
Work Schedule

Attached Behind This Page



ADDENDUM TO EXHIBIT D
Fee Schedule

Attached Behind This Page

RED BUD LANE FEE ESTIMATE

EXHIBIT D

FEE SCHEDULE - Supplemental Design Services for Plans, Specifications and Estimates

PROJECT NAME: Red Bud Lane SWA#2 - Utility Improvements/Traffic Signal

PRIME PROVIDER NAME: LJA Engineering, Inc.

Date: 4/21/2022

RED BUD LANE PROJECT												
TASK DESCRIPTION	Senior Project Manager	Senior Engineer/ Planner	Project Engineer	E.I.T.	Senior Utility Coordinator	Utility Coordinator	Senior Engineering Tech	CADD Operator	GIS Analyst/ Cartography	GIS Technician	Admin	Total
FC 145 - Project Management												
Team Coordination Meetings	4.0	4.0	4.0	4.0								16.0
Supplemental WA Contract Creation	8.0										8.0	16.0
Project Schedule	4.0	4.0										8.0
Document Control											8.0	8.0
Prepare Submittals and QA/QC	36.0	36.0									8.0	80.0
HOURS SUB-TOTALS	52.0	44.0	4.0	4.0	0.0	0.0	0.0	0.0	0.0	0.0	24.0	128.0
LABOR RATE PER HOUR	\$230	\$180	\$160	\$135	\$160	\$122	\$120	\$85	\$110	\$95	\$70	
SUBTOTAL	\$11,960	\$7,920	\$640	\$540	\$0	\$0	\$0	\$0	\$0	\$0	\$1,680	\$22,740
FC 162.3 - Traffic Signals												
Field Visits w/ RR Signal M&O Team	1.0	1.0	4.0									6.0
Existing Conditions Layout	1.0	2.0	4.0	10.0								17.0
Proposed Signal Layout	1.0	6.0	8.0	24.0								39.0
Proposed Signal Elevations	1.0	6.0	8.0	20.0								35.0
Proposed Signal Details	1.0	4.0	8.0	20.0								33.0
Proposed Wiring Diagram/Termination Chart	1.0	6.0	8.0	20.0								35.0
Standard SMA/DMA & Foundation Sheets	1.0	1.0	2.0	4.0								8.0
Other Standard Details		1.0	2.0	2.0								5.0
Signal Quantities, Summary Tables and OPC	1.0	2.0	6.0	8.0								17.0
Senior Design Reviews	12.0											12.0
HOURS SUB-TOTALS	20.0	29.0	50.0	108.0	0.0	0.0	0.0	0.0	0.0	0.0	0.0	207.0
LABOR RATE PER HOUR	\$230	\$180	\$160	\$135	\$160	\$122	\$120	\$85	\$110	\$95	\$70	
SUBTOTAL	\$4,600	\$5,220	\$8,000	\$14,580	\$0	\$0	\$0	\$0	\$0	\$0	\$0	\$32,400
TASK DESCRIPTION	Senior Project Manager	Senior Engineer/ Planner	Project Engineer	E.I.T.	Senior Utility Coordinator	Utility Coordinator	Senior Engineering Tech	CADD Operator	GIS Analyst/ Cartography	GIS Technician	Admin	Total
FC 163.10 - Utility Design												
163.10.1 Site Visits			4.0	4.0								8.0
163.10.2 Prepare Exhibits for Utility Meetings			4.0	8.0								12.0
163.10.3 Estimate and Quantity Data Sheet			16.0	32.0								48.0
163.10.4 Project Layout / Horizontal Alignment Layout sheet		4.0	6.0	16.0								26.0
163.10.5 Plan and profile sheets		40.0	250.0	450.0								740.0
163.10.6 Waterline Adjustments		4.0	10.0	40.0								54.0
163.10.7 Tie-In Lines Plan and Profiles		4.0	16.0	24.0								44.0
163.10.8 Standard Construction Details			2.0	4.0								6.0
163.10.9 Pressure Reducing Valve Vault		2.0	4.0	10.0								16.0
163.10.10 Senior Design Reviews	56.0											56.0
163.10.11 Project Manual with Technical Specifications		2.0	6.0	10.0								18.0
163.10.12 Engineer's Opinion of Probable Construction Costs		2.0	6.0	10.0								18.0
163.10.13 Respond to/Address City 60% comments		8.0	16.0	16.0								40.0
163.10.14 Respond to/Address City 90% comments		2.0	6.0	10.0								18.0
163.10.15 Respond to/Address City 100% comments		2.0	6.0	10.0								18.0
163.10.16 Respond to TCEQ comments		2.0	2.0	10.0								14.0
163.10.17 Plan Submission to TCEQ		1.0	1.0	4.0								6.0
HOURS SUB-TOTALS	56.0	73.0	355.0	658.0	0.0	0.0	0.0	0.0	0.0	0.0	0.0	1142.0
LABOR RATE PER HOUR	\$230	\$180	\$160	\$135	\$160	\$122	\$120	\$85	\$110	\$95	\$70	
SUBTOTAL	\$12,880	\$13,140	\$56,800	\$88,830	\$0	\$0	\$0	\$0	\$0	\$0	\$0	\$171,650
LJA ENGINEERING, INC. TOTAL												\$226,790.00