


III.

Article 4, Compensation and Exhibit D, Fee Schedule shall be amended by increasing by \$119,746.00 the maximum amount payable under the Contract for a total of \$383,970.00, as shown by the attached Addendum to Exhibit D.

IN WITNESS WHEREOF, the City and the Engineer have executed this Supplemental Contract in duplicate.

[signature pages follow]

BGE, INC.

By: 

Brian D. Rice

8/2/24

Date

CITY OF ROUND ROCK

APPROVED AS TO FORM:

By: _____
Craig Morgan, Mayor

Stephanie L. Sandre, City Attorney

Date

ADDENDUM TO EXHIBIT A

City Services

- City of Round Rock will provide any records available which would assist in the completion of the project development.
- City of Round Rock will facilitate coordination with adjacent plant projects including design documents and meetings with design firm team members.
- City of Round Rock will provide timely reviews and decisions necessary to maintain the project work schedule.

ADDENDUM TO EXHIBIT B Engineering Services

Project Background

This project includes revising final plans for the 2-million-gallon reuse ground storage tank dated 11/2023. The revision will include removal of the transfer pump, associated electrical, revised site plan, and fiber conduits. The following provides the scope of work to provide supplemental design and construction phase services.

Scope of Services

1. Project Management and Meetings

- a. Project Management: All communication and submittals to the City will be directed through the team's Project Manager unless specifically authorized otherwise. The project management activities shall include task leadership and direction, telephone and written communication, project updates and status reports, project schedule, and personnel and data management along with other general project management activities. Assumes 5 months design and bidding and 15-months construction.
- b. Site Visits and Coordination: BGE to visit the site up to two times to evaluate and document current site conditions. BGE will communicate and coordinate with the City and adjacent design project to define constraints in the plans and specifications related to site access and availability. Two (2) 2-hour site visits during design are included in this task. Additional meetings may be held during bid-phase and construction phase services, as defined below.

2. Civil, Electrical, Instrumentation & Control Design

BGE will revise the existing civil drawings to modify project components including, but not limited to, drawing index, civil site plan, schematics, hydraulic profile, process details, site improvements, erosion control, drainage area map, yard piping, and clearwell plans. The drawings, specifications, and bid tab will be modified to include applicable changes defined in the approved addendums prepared with the previous bid.

BGE will revise the existing electrical, instrumentation and control drawings to remove the fiber transfer pump and remove fiber conduit, including but not limited to the electrical site plan, one-line diagrams, power plans, duct banks, motor control center, auto sensory panels, control diagrams, and details.

BGE provided design changes to the final plans requested by the CORR to support the design and construction of adjacent projects and modify the GST system design. BGE also supported CORR in evaluating alternatives as part of the competitive sealed proposal process.

Deliverables:

- 95% and Final plan sheets and technical specifications (CORR to provide one review)

3. Bid Phase Services

Bid Phase services includes the following:

- a. Attendance at the pre-bid conference to provide prospective bidders project information. ENGINEER will prepare an agenda, attendance list, and conference summary .
- b. Response to contractor questions via project addenda (assume 2 addenda).
- c. Conduct bid evaluation to consist of the following:
 - o Evaluate contractor qualifications based on Competitive Sealed Proposal (CSP) criteria.
 - o Prepare bid tabulation.
 - o Conduct reference checks on up to three bidders to develop the highest ranked bidder.
 - o Provide a letter of recommendation to CORR based on Engineer's evaluation and contractor bid responsiveness.

Deliverables:

- i. Bid Tabulation
- ii. Letter of Recommendation

4. Construction Phase Services

It is assumed that construction duration for the City's component of the Project is approximately fifteen (15) months (from NTP to the ground storage tank project completion). BGE will support the Project during construction as follows:

- a. Project Management / Coordination
- b. Attend pre-construction conference and provide meeting agendas and minutes.
- c. Project meetings / construction observation including construction observation reports. Assume representation of monthly meetings to be attended by one person from BGE. Also assumes up to two additional meetings, as needed (17 total meetings).
- d. Construction material submittal reviews (assume up to 30 submittals).
- e. Respond to requests for Information (RFIs)/modifications.
- f. Review contractor or City initiated change orders and provide responses. Assumes up to 2 owner-initiated change order documents and RFPs.
- g. Review monthly pay estimates and change orders.
- h. Final walkthrough and issuance of punch list items.
- i. Develop record drawings.

Deliverables

- i. Shop drawing submittal and RFI log in pdf format
- ii. Change order log in pdf format
- iii. Record Drawings in pdf, and AutoCAD format.

5. Compensation

Reference Exhibit “D” for a breakdown of services.

6. Schedule

BGE will provide the construction plans and specification deliverables within 3 months of notice to proceed.

Task Name	Duration	Start	Finish
NTP	1 day	Mon 8/12/24	Mon 8/12/24
95% Design and Specs	30 days	Tue 8/13/24	Mon 9/23/24
95% CORR Review	10 days	Tue 9/24/24	Mon 10/7/24
Finalize Plans and Specs	10 days	Tue 10/8/24	Mon 10/21/24
Post for Bid	1 day	Tue 10/22/24	Tue 10/22/24
Bid	20 days	Wed 10/23/24	Tue 11/19/24
Select Contractor	10 days	Wed 11/20/24	Tue 12/3/24
Contracts and Council for Selection	35 days	Wed 12/4/24	Tue 1/21/25
Contractor Notice to Proceed	22 days	Wed 1/22/25	Thu 2/20/25
Contractor Submittals and Review	40 days	Fri 2/21/25	Thu 4/17/25
Contractor Mobilize	7 days	Fri 4/18/25	Mon 4/28/25
Construction (395 + 30 Calendar Days)	306 days	Tue 4/29/25	Tue 6/30/26
Record Drawings and Closeout	15 days	Wed 7/1/26	Tue 7/21/26

7. Assumptions

- a. The Project scope document and associated fee hours were prepared with the assumption that the Project’s construction phase is 13-months in duration. If the construction period is extended, an additional services proposal will be submitted to the City for the anticipated extended time period for staff consideration and approval.
- b. The CORR will be responsible for preparing the Project Manual. The Engineer will provide information to be included such as the bid form and construction time of completion.
- c. The CORR will manage the bidding process using CivCast or Bonfire and will not require the support of BGE for bid management.
- d. Site modifications requiring surveying and modifications to the existing plans have not occurred since the final plans (dated 11/2023).
- e. Modifications to the plans for the ground storage tank, clear well drain, and water line (dated 11/2023) will be not be required.

Exclusions–The following items are excluded from the scope of work:

1. Geotechnical or environmental engineering services.
2. Payment of review fees, application fees, permit fees, or impact fees.
3. Legal advice, recommendations, or analysis.

4. Survey services unless authorized by Owner.
5. Construction inspection services.
6. Construction staking.
7. Plat recordation and addressing services.
8. Environmental studies.
9. Landscaping.
10. Drainage report, CLOMR/LOMR or FEMA submittals for this site.

**ADDENDUM TO EXHIBIT C
Work Schedule**

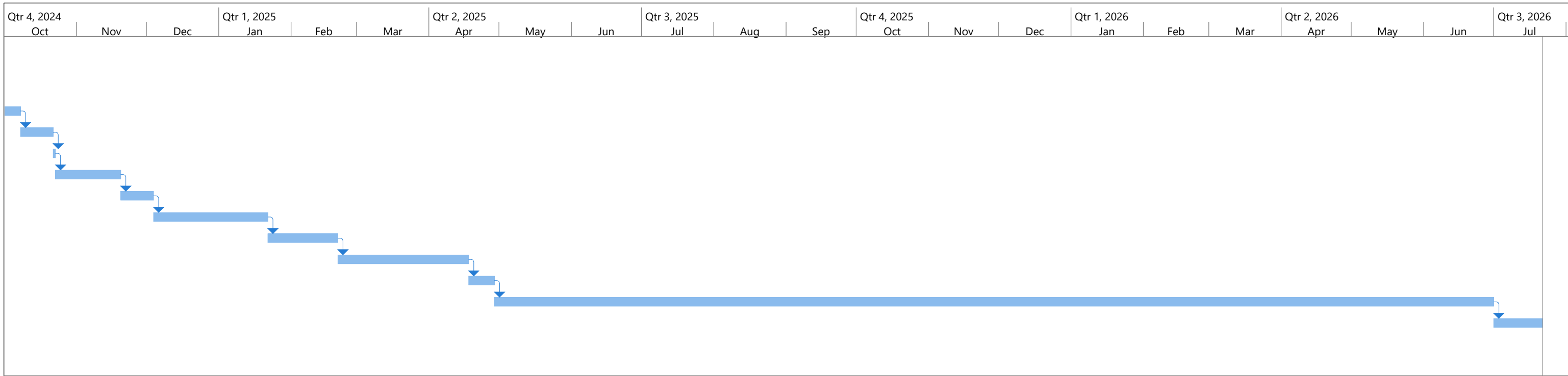
Attached Behind This Page

ID	Task Name	Duration	Start	Finish	Predecessors	Qtr 1, 2024			Qtr 2, 2024			Qtr 3, 2024		
						Nov	Dec	Jan	Feb	Mar	Apr	May	Jun	Jul
1														
2	NTP	1 day	Mon 8/12/24	Mon 8/12/24										
3	95% Design and Specs	30 days	Tue 8/13/24	Mon 9/23/24	2									
4	95% CORR Review	10 days	Tue 9/24/24	Mon 10/7/24	3									
5	Finalize Plans and Specs	10 days	Tue 10/8/24	Mon 10/21/24	4									
6	Post for Bid	1 day	Tue 10/22/24	Tue 10/22/24	5									
7	Bid	20 days	Wed 10/23/24	Tue 11/19/24	6									
8	Select Contractor	10 days	Wed 11/20/24	Tue 12/3/24	7									
9	Contracts and Council for Selection	35 days	Wed 12/4/24	Tue 1/21/25	8									
10	Contractor Notice to Proceed	22 days	Wed 1/22/25	Thu 2/20/25	9									
11	Contractor Submittals and Review	40 days	Fri 2/21/25	Thu 4/17/25	10									
12	Contractor Mobilize	7 days	Fri 4/18/25	Mon 4/28/25	11									
13	Construction (395 + 30 Calendar Days)	306 days	Tue 4/29/25	Tue 6/30/26	12									
14	Record Drawings and Closeout	15 days	Wed 7/1/26	Tue 7/21/26	13									
15														
16														



Project: SH 29 Schedule DRAFT
Date: Mon 7/15/24

Task		Project Summary		Manual Task		Start-only		Deadline	
Split		Inactive Task		Duration-only		Finish-only		Progress	
Milestone		Inactive Milestone		Manual Summary Rollup		External Tasks		Manual Progress	
Summary		Inactive Summary		Manual Summary		External Milestone			



Project: SH 29 Schedule DRAFT
Date: Mon 7/15/24

Task		Project Summary		Manual Task		Start-only		Deadline	
Split		Inactive Task		Duration-only		Finish-only		Progress	
Milestone		Inactive Milestone		Manual Summary Rollup		External Tasks		Manual Progress	
Summary		Inactive Summary		Manual Summary		External Milestone			

**ADDENDUM TO EXHIBIT D
Fee Schedule**

Attached Behind This Page

PROJECT NAME:
2 MG Reuse GST Rebid
July 14, 2024

EXHIBIT D-1 - FEE SCHEDULE

TASK	DESCRIPTION	BGE	TOTAL
1	PROJECT MANAGEMENT	\$ 14,980.00	\$ 14,980.00
2	CIVIL, ELECTRICAL, I&C DESIGN	\$ 41,230.00	\$ 41,230.00
3	BID SERVICES	\$ 10,220.00	\$ 10,220.00
4	CONSTRUCTION PHASE SERVICES	\$ 52,860.00	\$ 52,860.00
	OTHER DIRECT EXPENSES	\$456.00	\$456.00
	Total		\$ 119,746.00

TASK DESCRIPTION	Senior Project Mgr	Project Manager	Project Engineer V	Project Engineer III	EIT	Senior CADD Op	CADD Tech	Construction PM	QA/QC	Admin / Clerical	Total	TOTAL LABOR HRS. & COSTS
1 PROJECT MANAGEMENT												\$14,980.00
Project Management, Coordination, Monthly Reporting		18		42						8	68	\$12,970.00
Site Visits and Design Coordination				6		6					12	\$2,010.00
2 CIVIL, ELECTRICAL, I&C DESIGN												\$41,230.00
Civil Construction Plans (95% Final) (~ 22 sheets)		2		20		44			4		70	\$12,070.00
Civil Specifications (90 & 100%)		2		12					4	6	24	\$4,290.00
Electrical, I&C Construction Plans (90 & 100%) (~ 11 sheets)		2	14			22			2		40	\$7,930.00
Electrical Specifications (90 & 100%)		2	6						2	6	16	\$3,040.00
Modifications to Final 11/2023 Plans		4	24	8		12					48	\$10,240.00
Evaluation To Reduce Project Costs and/or Shift to Other Projects			12	4							16	\$3,660.00
3 BID SERVICES												\$10,220.00
Pre-Bid Meeting (Prep and Meeting)		2		4							6	\$1,250.00
RFI Response		2	6	16	4						28	\$5,460.00
Bid Evaluation		4		12	2						18	\$3,510.00
4 CONSTRUCTION PHASE SERVICES												\$52,860.00
Project Management (Included in Task 1)											0	\$0.00
Pre-Construction Conference				5							5	\$900.00
Project Meetings/Construction Observation (monthly) (17 total)		14		51							65	\$12,890.00
Construction Material Submittals (assume up to 30 submittals)		8	8	30							46	\$9,480.00
RFI Response		2	4	12							18	\$3,670.00
Review contractor change orders and up to 2 owner change orders		8	16	12							36	\$8,200.00
Monthly Pay Estimates and Change Orders		4	8	36							48	\$9,500.00
Final Walkthrough and Punch List			2	6							8	\$1,570.00
Develop Record Drawings			4	8		18	12				42	\$6,650.00
HOURS SUB-TOTALS	0	74	104	284	6	102	12	0	12	20	614	614
CONTRACT RATE PER HOUR	\$280.00	\$265.00	\$245.00	\$180.00	\$145.00	\$155.00	\$120.00	\$230.00	\$280.00	\$80.00		
TOTAL LABOR COSTS	\$0.00	\$19,610.00	\$25,480.00	\$51,120.00	\$870.00	\$15,810.00	\$1,440.00	\$0.00	\$3,360.00	\$1,600.00		\$119,290.00
SUBTOTAL												\$119,290.00

TASK	TOTAL COSTS	TOTAL DIRECT EXPENSE	TOTAL LABOR COSTS	Senior Project Manager	Project Manager	Project Engineer	EIT	Senior CADD Operator	CADD Tech			QAQC	Admin / Clerical		TOTAL MH BY TASK
	\$119,746.00	\$456.00	\$119,290.00	0	74	104	284	6	102	12	0	12	20	614	614
SUBTOTAL LABOR HOURS				0	74	104	284	6	102	12	0	12	20	614	614
SUBTOTAL LABOR EXPENSES	\$119,746.00	\$456.00	\$119,290.00	0.0%	12.1%	16.9%	46.3%	1.0%	16.6%	2.0%	0.0%	2.0%	3.3%		

OTHER DIRECT EXPENSES	QUANTITY	UNIT	RATE	
Mileage	600	mile	\$ 0.56	\$336.00
Photocopies B/W (11" X 17")	600	each	\$ 0.20	\$120.00
DIRECT EXPENSES				\$456.00

SUMMARY	
LABOR COSTS	\$119,290.00
NON-SALARY (OTHER DIRECT EXPENSES)	\$456.00
GRAND TOTAL	\$119,746.00