

MATERIALS LEGEND

PC1	PC2	PC3	PC4	PC5
MP1	MP2			

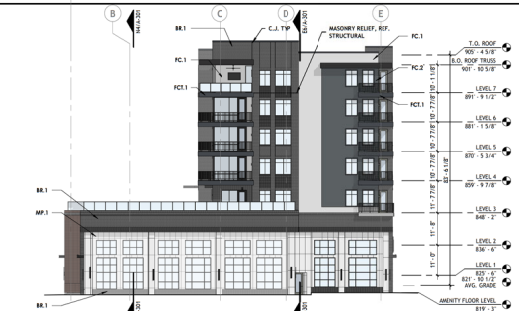
- GENERAL NOTES:
 EXTERIOR ELEVATION**
1. INTAKE EXHAUST VENT WALL CAP SHOWN FOR APPROXIMATE LOCATION. ALL CAPS TO BE ALIGNED HORIZONTALLY AND VERTICALLY WHERE POSSIBLE. COLOR TO MATCH ADJACENT MATERIAL.
 2. DOWNSPOUTS, COPING AND CURBLES TO BE PAINTED TO MATCH ADJACENT MATERIAL.
 3. ALL FIBER CONCRETE LAP JOINTS TRIM TO MATCH ADJACENT TEXTURE AND COLOR.
 4. ALL SOOD SERVICE DOORS TO BE COLOR MATCHED TO ADJACENT MATERIAL, U.S.G.
 5. REF. FINISH SCHEDULE ON SHEET A41
 6. X-VENT TO BE USED AT DIRT EXHAUST LOCATIONS AS NOTED. RED WICK. PAINT VENTS TO MATCH ADJACENT MATERIAL.



N1 BUILDING ELEVATION - NORTH
 1/16" = 1'-0"



J1 BUILDING ELEVATION - WEST
 1/16" = 1'-0"



E1 BUILDING ELEVATION - SOUTH
 1/16" = 1'-0"



E7 BUILDING ELEVATION - SOUTH
 1/16" = 1'-0"



E16 BUILDING ELEVATION - SOUTH
 1/16" = 1'-0"



A1 BUILDING ELEVATION - EAST
 1/16" = 1'-0"



A7 BUILDING ELEVATION - EAST
 1/16" = 1'-0"



A12 BUILDING ELEVATION - EAST
 1/16" = 1'-0"