



FERNSPRING DRIVE

LAKE FOREST DRIVE

GATTIS SCHOOL ROAD

HIGH COUNTRY BOULEVARD

COMMUNITY HOMEOWNERS ASSOCIATION OF LAKE FOREST, INC.  
DOC. NO. 2001091900  
O.P.R.W.C.T.

WSP DEVELOPMENT #1, LTD.  
(REMAINDER OF 19.771 AC.)  
DOC. NO. 2001019239 & 2001032313  
O.P.R.W.C.T.

PART 1  
OWNERS OF LAKE FOREST, INC.  
(ACT)  
91900

WAYNE PULLIAM AND WIFE,  
MARILYN PULLIAM  
DOC. NO. 9859497  
O.R.W.C.T.  
PULLIAM SHIRE  
CAB. X, SLIDE 64-65  
P.R.W.C.T.

FAITH BAPTIST CHURCH OF  
ROUND ROCK, TEXAS  
(2.39 AC.)  
DOC. NO. 2001088258  
O.P.R.W.C.T.  
LOT 1, BLOCK A  
FBC ADDITION  
CAB. W, SLIDE 116-117  
P.R.W.C.T.

MENFI A. MANAGEMENT, LP.  
DOC. NO. 2007099309  
O.P.R.W.C.T.

HIGH COUNTRY INV., LP  
DOC. NO. 2005060619  
O.P.R.W.C.T.  
HIGH COUNTRY, SECTION THREE  
CAB. L, SLIDE 300-302  
P.R.W.C.T.

CITY OF ROUND ROCK  
1.276 ACRE  
DRAINAGE,  
STORMSEWER &  
DETENTION LOT

12  
PART 2

16  
0.096 AC.

17

12

0.112 AC.

0.636 AC.

0.260 AC.

0.308 AC.

13  
0.297 AC.

14  
0.099 AC.

15

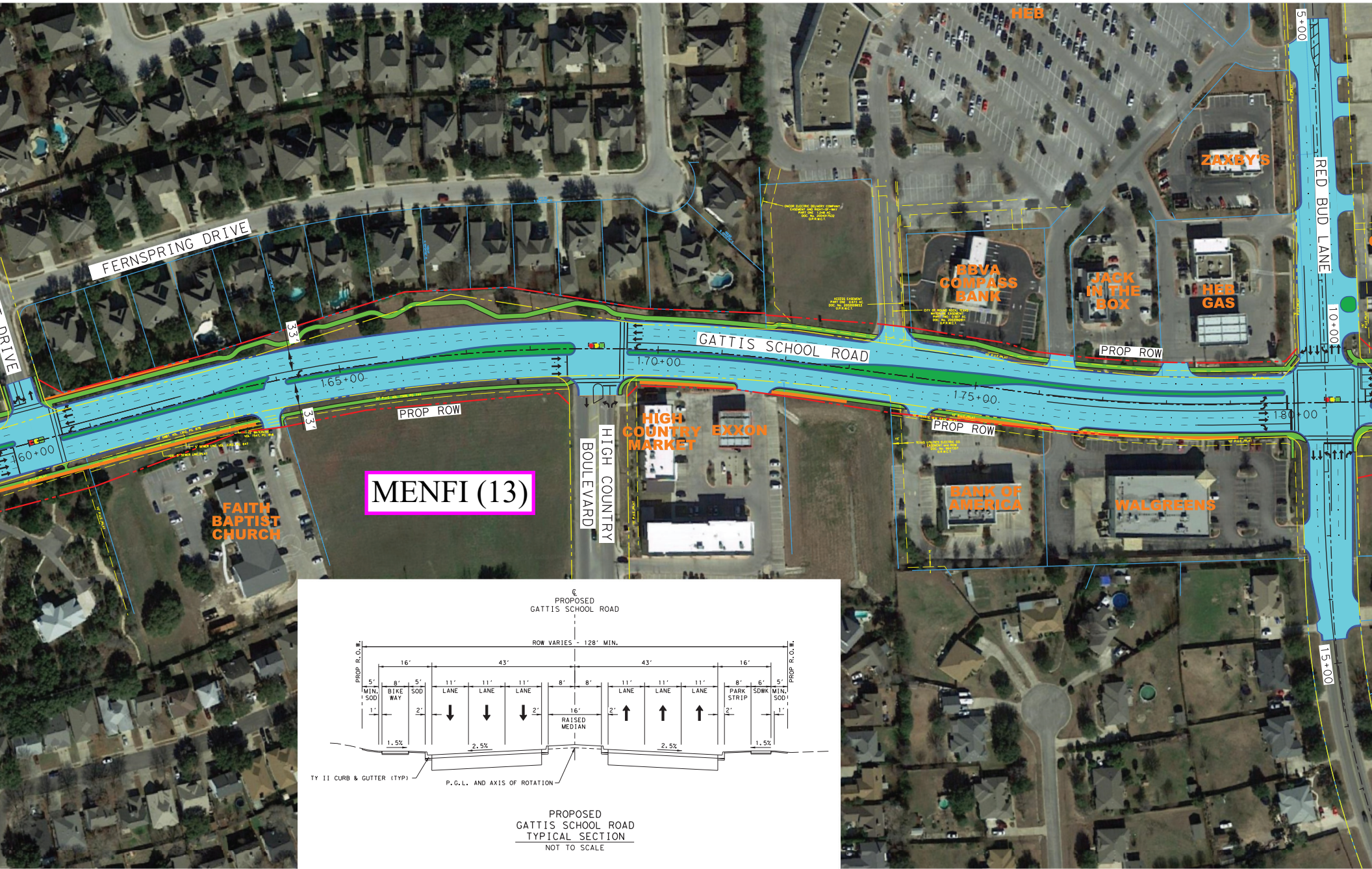
10

11

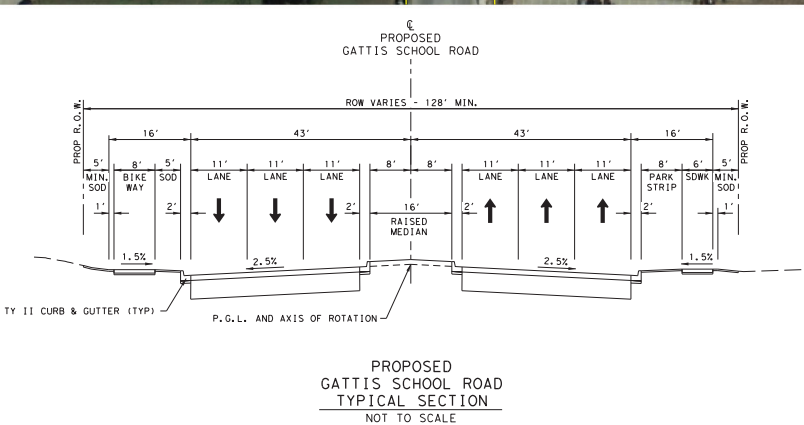
PROP ROW

INLAND W  
FOREST C  
DOC.

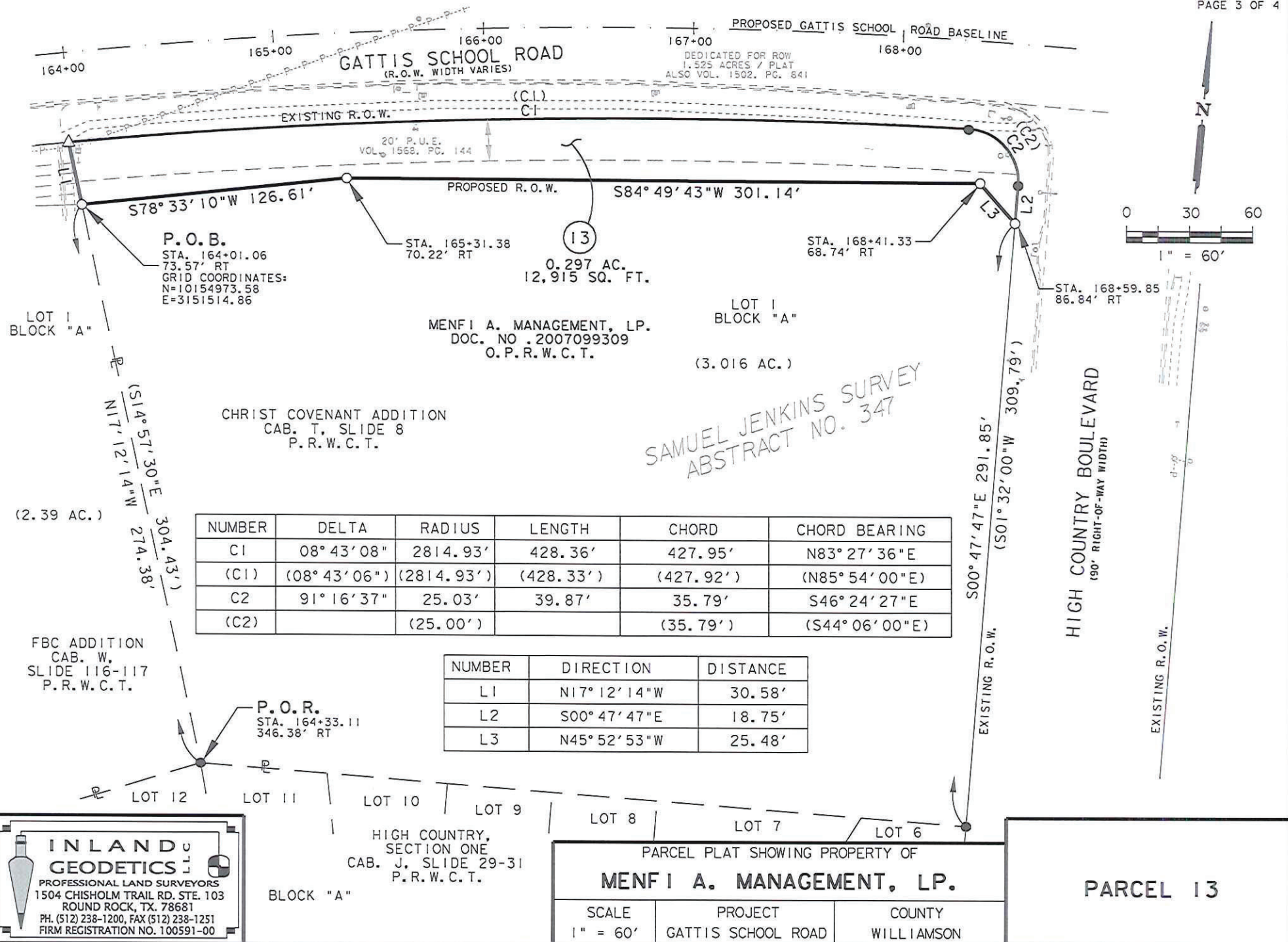
ARG  
AL



**MENFI (13)**



PLAT TO ACCOMPANY PARCEL DESCRIPTION



**INLAND GEODETICS**  
 PROFESSIONAL LAND SURVEYORS  
 1504 CHISHOLM TRAIL RD. STE. 103  
 ROUND ROCK, TX. 78681  
 PH. (512) 238-1200, FAX (512) 238-1251  
 FIRM REGISTRATION NO. 100591-00