

Exhibit D (Page 1 of 2)
Conceptual Images of the Livable Street
District Way (Private Portion)

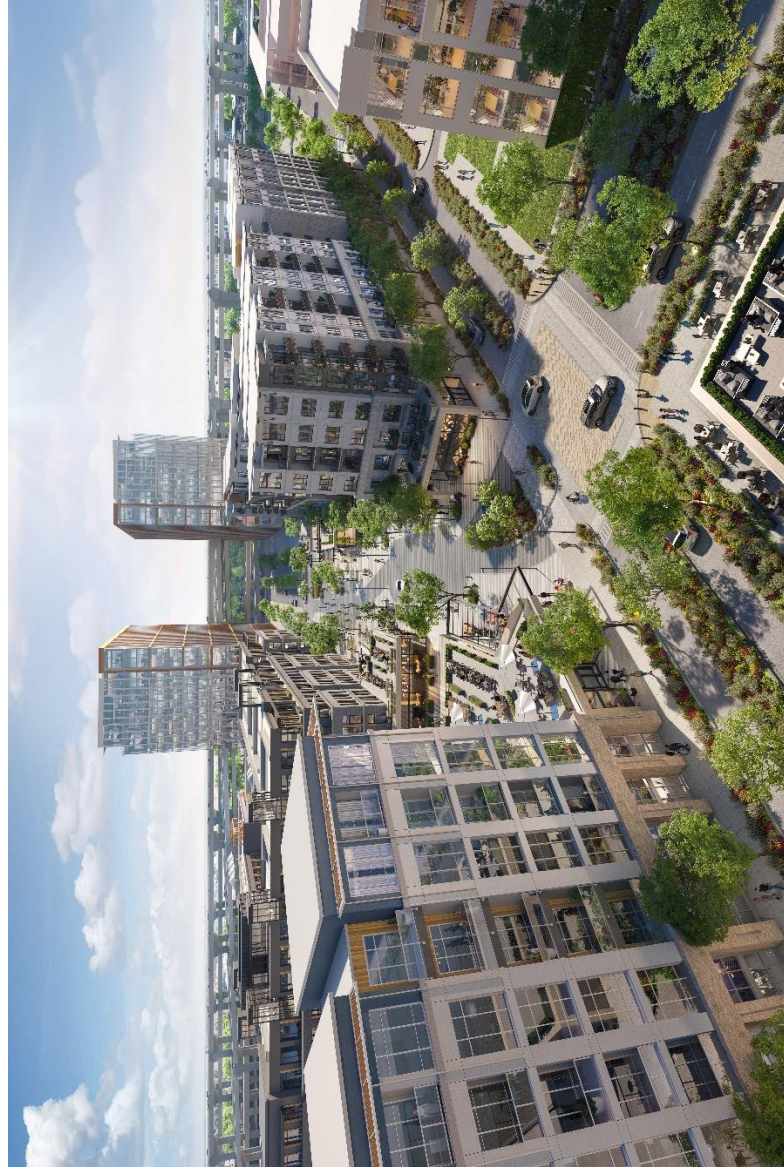


Exhibit D (Page 2 of 2)



- LEGEND**
1. Livable Street
 2. Landscaped Median
 3. Parallel Parking
 4. Enhanced Crosswalk
 5. Public Plaza
 6. Retail Patio
 7. Future Phase Paseo
 8. Private Yards
 9. Transformer
 10. Retail Plaza

Conceptual Plan
District Way (Private Street Portion)
 Round Rock, Texas

NORTH
 SCALE: 1"=60'
 0' 30' 60'
 ISSUE DATE: April 25, 2024
 All drawings are preliminary and subject to change.
 © 2024 Hitchcock Design Group

PREPARED FOR
MARK IV CAPITAL
 IN ASSOCIATION WITH
SD DESIGN **KFM**
 ENGINEERING & DESIGN