



**EXHIBIT**  
**"A"**

**STANDARD UTILITY AGREEMENT**

County: Williamson  
Federal Project No.: N/A  
ROW CSJ: 0683-01-092  
Highway Project Letting Date: April 2019

U-Number: **U14696**  
Highway: RM 620  
From: Deepwood Drive  
To: IH-35

This Agreement by and between the City of Round Rock, acting by and through its City Council, ("**City**"), and Oncor Electric Delivery, LLC, ("**Utility**"), acting by and through its duly authorized representative, shall be effective on the date of approval and execution by and on behalf of the **City**.

**WHEREAS**, the **City** has deemed it necessary to make certain highway improvements as designated by the State and approved by the Federal Highway Administration within the limits of the highway as indicated above;

**WHEREAS**, the proposed highway improvements will necessitate the adjustment, removal, and/or relocation of certain facilities of **Utility** as indicated in the following statement of work: [Oncor is relocating electric distribution facilities starting at station 458+32 thru 506+26 consisting of installing 6 concrete poles and 48 wood poles, 6130 ft of conductor. It is proposed to remove 28 poles and 4848 ft of conductor. This is required due to a TXDOT road widening project on RM 620 starting at Deepwood Drive and ending at IH-35 in Round Rock] ; and more specifically shown in **Utility's** plans, specifications and estimated costs, which are attached hereto as Attachment "A".

**WHEREAS**, the **City** will participate in the costs of the adjustment, removal, and/or relocation of certain facilities to the extent as may be eligible for **City** participation.

**WHEREAS**, the **City**, upon receipt of evidence it deems sufficient, acknowledges **Utility's** interest in certain lands and/or facilities that entitle it to reimbursement for the adjustment, removal, and relocation of certain of its facilities located upon the lands as indicated in the statement of work above.

**NOW, THEREFORE, BE IT AGREED:**

The **City** will pay to **Utility** the costs incurred in adjustment, removal, and/or relocation of **Utility's** facilities up to the amount said costs may be eligible for **City** participation.

All conduct under this agreement, including but not limited to the adjustment, removal and relocation of the facility, the development and reimbursement of costs, any environmental requirements, and retention of records will be in accordance with all applicable federal and state laws, rules and regulations, including, without limitation, the Federal Uniform Relocation Assistance and Real Property Acquisition Policies Act, 42 U.S.C. §§ 4601, et seq., the National Environmental Policy Act, 42 U.S.C. §§ 4231, et seq., the Buy America provisions of 23 U.S.C. § 313 and 23 CFR 635.410, the Utility Relocations, Adjustments, and Reimbursements provisions of 23 CFR 645, Subpart A, and with the Utility Accommodation provisions of 23 CFR 645, Subpart B. **Utility** shall supply, upon request by the **City**, proof of compliance with the aforementioned laws, rules and regulations prior to the commencement of construction.

The **Utility** agrees to develop relocation or adjustment costs by accumulating actual direct and related indirect costs in accordance with a work order accounting procedure prescribed by the **City**, or may, with the **City's** approval, accumulate actual direct and related indirect costs in accordance with an established accounting procedure developed by **Utility**. Bills for work hereunder will be submitted to the **City** not later than 90 days after completion of the work.

\_\_\_\_\_  
Initial                      Date  
                                    City

*RA 8/23/20*  
\_\_\_\_\_  
Initial                      Date  
                                    Utility



When requested, the **City** will make intermediate payments at not less than monthly intervals to **Utility** when properly billed and such payments will not exceed 90 percent (90%) of the eligible cost as shown in each such billing. Intermediate payments shall not be construed as final payment for any items included in the intermediate payment.

Alternatively, **City** agrees to pay **Utility** an agreed lump sum of **\$N/A** as supported by the attached estimated costs. The State will, upon satisfactory completion of the adjustments, removals, and/or relocations and upon receipt of a final billing, make payment to **Utility** in the agreed amount.

Upon execution of this agreement by both parties hereto, the **City** will, by written notice, authorize the **Utility** to perform such work diligently, and to conclude said adjustment, removal, or relocation by the stated completion date. The completion date shall be extended for delays caused by events outside **Utility's** control, including an event of Force Majeure, which shall include a strike, war or act of war (whether an actual declaration of war is made or not), insurrection, riot, act of public enemy, accident, fire, flood or other act of God, sabotage, or other events, interference by the **City** or any other party with **Utility's** ability to proceed with the relocation, or any other event in which **Utility** has exercised all due care in the prevention thereof so that the causes or other events are beyond the control and without the fault or negligence of **Utility**.

The **City will**, upon satisfactory completion of the relocation or adjustment and upon receipt of final billing prepared in an approved form and manner, make payment in the amount of 90 percent (90%) of the eligible costs as shown in the final billing prior to audit and after such audit shall make an additional final payment totaling the reimbursement amount found eligible for **City** reimbursement.

This agreement in its entirety consists of the following elements:

1. Standard Utility Agreement;
2. Plans, Specifications, and Estimated Costs (Attachment "A");
3. Utility's Accounting Method (Attachment "B");
4. Utility's Schedule of Work and Estimated Date of Completion (Attachment "C");
5. Statement Covering Contract Work – ROW-U-48 (Attachment "D");
6. Eligibility Ratio (Attachment "F");
7. Betterment Calculation and Estimates (Attachment "G");
8. Proof of Property Interest – ROW-U-1A, ROW-U-1B, or ROW-U-1C (Attachment "H"); and
9. Utility Joint Use Acknowledgment - ROW-U-JUA and/or Utility Installation Request - Form 1082 (Attachment "E").

All attachments are included herein as if fully set forth. In the event it is determined that a substantial change from the statement of work contained in this agreement is required, reimbursement therefore shall be limited to costs covered by a modification or amendment of this agreement or a written change or extra work order approved by the **City and Utility**.

This agreement is subject to cancellation by the **City** at any time up to the date that work under this agreement has been authorized and that such cancellation will not create any liability on the part of the **City**. However, the **City** will review and reimburse the **Utility** for eligible costs incurred by the **Utility** in preparation of this Agreement.

The State and/or City Auditor may conduct an audit or investigation of any entity receiving funds from the **City** directly under this contract or indirectly through a subcontract under this contract. Acceptance of funds directly under this contract or indirectly through a subcontract under this contract acts as acceptance of the authority of the State Auditor, under the direction of the Legislative Audit Committee, to conduct an audit or investigation in connection with those funds. An entity that is the subject of an audit or investigation must provide the state auditor with access to any information the state auditor considers relevant to the investigation or audit.

The **Utility** by execution of this agreement does not waive any of the rights which **Utility** may have within the limits of the law.

It is expressly understood that the **Utility** conducts the adjustment, removal, or relocation at its own risk, and that the **City** makes no warranties or representations regarding the existence or location of utilities currently within its right of way.

The signatories to this agreement warrant that each has the authority to enter into this agreement on behalf of the party represented.

**UTILITY**

Utility: Oncor Electric Delivery Company  
Name of Utility

By:   
Authorized Signature

KEITH HULL  
Print or Type Name

Title: VICE PRESIDENT OF DISTRIBUTION OPERATIONS

Date: 8-23-2018

**CITY OF ROUND ROCK**



By: \_\_\_\_\_  
Authorized Signature

\_\_\_\_\_  
Print or Type Name

Title: \_\_\_\_\_

Date: \_\_\_\_\_



**Electric Delivery LLC**

<b>ONCOR Project:</b>	<b>3264595</b>
<b>TXDOT U-No.:</b>	<b>U14696</b>
<b>District:</b>	<b>AUSTIN</b>
<b>County:</b>	<b>WILLIAMSON</b>
<b>Federal Proj. No.:</b>	<b>N/A</b>
<b>ROW CSJ No.:</b>	<b>0683-01-092</b>
<b>Const CSJ:</b>	<b>N/A</b>
<b>Highway No.:</b>	<b>RM 620</b>
<b>From:</b>	<b>DEEPWOOD DRIVE</b>
<b>To:</b>	<b>IH-35</b>
<b>Eligibility Ratio</b>	<b>42.86%</b>

## Attachment "A"

**Includes:**

- Summary Estimate
- Labor Estimate
- Materials Estimate
- Vouchers Estimate (if applicable)
- Plan Drawings



Electric Delivery LLC

ONCOR Project: 3264595  
TXDOT U-No.: U14696  
District: AUSTIN  
County: WILLIAMSON  
Federal Proj. No.: N/A  
ROW CSJ No.: 0683-01-092  
Const CSJ: N/A  
Highway No.: RM 620  
From: DEEPWOOD DRIVE  
To: IH-35

Attachment "A"  
Summary Estimate

Contractors Expense	154,340.90	
Vouchers	22,900.00	
Materials	165,732.14	
<b>subtotal 1 :</b>		<b>342,973.04</b>
Construction Overhead	30.00%	102,891.91
<b>subtotal 2 :</b>		<b>445,864.95</b>
<b>Total Charged to Project</b>		<b>445,864.95</b>
<b>Salvage Material</b>		0.00
<b>Net Estimated Cost</b>		<b>445,864.95</b>
<b>Less Betterment</b>		0.00
<b>Estimated Cost</b>		<b>445,864.95</b>
<b>Eligibility Ratio</b>	<b>42.86%</b>	<b>191,097.72</b>

Oncor's Construction  
Overhead cost includes the  
design, engineering, building  
& etc associated with this  
project.



Electric Delivery LLC

ONCOR Project: 3264595  
 TXDOT U-No.: U14696  
 District: AUSTIN  
 County: WILLIAMSON  
 Federal Proj. No.: N/A  
 ROW CSJ No.: 0683-01-092  
 Const CSJ: N/A  
 Highway No.: RM 620  
 From: DEEPWOOD DRIVE  
 To: IH-35

Attachment "A"  
 Labor Estimate

Work Unit	Description	Estimated Quantity	Estimated Cost Per Unit	Estimated Cost
CB2030I	Secondary Or Service Cable, Through 4/0, Through 4 Conductors, In Conduit. Includes: Set Up/breakdown, Pulling Cable, Maintaining Moisture Seal At Cable Ends, Tagging, And Cleanup. Unit Of Measure = Per Foot.	23	\$1.47	\$ 33.81
CB2030R	Secondary Or Service Cable, Through 4/0, Through 4 Conductors, In Conduit. Includes: Set Up/breakdown, Pulling Cable, Maintaining Moisture Seal At Cable Ends, Tagging, And Cleanup. Unit Of Measure = Per Foot.	80	\$0.73	\$ 58.40
CB2033I	Secondary, Service, Or Streetlight, For Pole Riser Through 4/0, Through 4 Conductors. Includes: Set Up/breakdown, Installing Pull Rope, Pulling Cable, Maintaining Moisture Seal At Cable Ends, Tagging, And Cleanup. Unit Of Measure = Per Riser.	3	\$106.96	\$ 320.88
CB2033R	Secondary, Service, Or Streetlight, For Pole Riser Through 4/0, Through 4 Conductors. Includes: Set Up/breakdown, Installing Pull Rope, Pulling Cable, Maintaining Moisture Seal At Cable Ends, Tagging, And Cleanup. Unit Of Measure = Per Riser.	3	\$105.59	\$ 316.77
CV3150I	Pedestal. Includes: Excavation, Trimming Conduit, Pedestal, Pedestal Protection Device If Required, Backfill, Compaction, Set To Final Grade, Secure Enclosure, Fin Plate, And Cleanup. Unit Of Measure = Each.	1	\$74.24	\$ 74.24
MS7190I	Anchor/pole Stabilization - Concrete. Includes: Mixing, Pouring, And Roding Concrete. Unit Of Measure = Each.	27	\$96.01	\$ 2,592.27
MS7000I	Cover-up. Includes: Placement And Removal Of All Rubber Blanket(s) And/or All Rubber Hoses Required Per Work Point. Unit Of Measure = Each Work Point.	118	\$66.31	\$ 7,824.58
MS7160I	Wildlife Protection. Applies Only To Installation On Existing Equipment. Includes: Protector. Unit Of Measure = Each.	38	\$10.33	\$ 392.54
MS7160R	Wildlife Protection. Applies Only To Installation On Existing Equipment. Includes: Protector. Unit Of Measure = Each.	38	\$10.33	\$ 392.54
OH4170I	Arrestor, Distribution. Includes: Arrestor, Wildlife Protection, Ground, And Mount Bracket When Applicable, Jumpers And Connection's). Unit Of Measure = Each.	16	\$69.89	\$ 1,118.24
OH4170R	Arrestor, Distribution. Includes: Arrestor, Wildlife Protection, Ground, And Mount Bracket When Applicable, Jumpers And Connection's). Unit Of Measure = Each.	22	\$48.40	\$ 1,064.80
OH4190I	Bare Conductor, Any Size. Includes: Rollers, String, Rope, Conductor, And Cleanup. Unit Of Measure = Per Foot, Per Conductor.	22043	\$0.51	\$ 11,241.93
OH4190R	Bare Conductor, Any Size. Includes: Rollers, String, Rope, Conductor, And Cleanup. Unit Of Measure = Per Foot, Per Conductor.	14679	\$0.17	\$ 2,495.43
OH4060I	Bracket, Standoff (1 Or 2 Single Phase, Or 1 Or 2 Two Phase), Fiberglass. Includes: Drilling Pole, Bracket And Mounting Hardware. Unit Of Measure = Each.	20	\$25.07	\$ 501.40
OH4060R	Bracket, Standoff (1 Or 2 Single Phase, Or 1 Or 2 Two Phase), Fiberglass. Includes: Drilling Pole, Bracket And Mounting Hardware. Unit Of Measure = Each.	1	\$17.93	\$ 17.93
OH4350I	Bracket, Transformer Mounting. Includes: Assemble Bracket And Mount Bracket. Unit Of Measure = Each.	2	\$36.19	\$ 72.38
OH4350R	Bracket, Transformer Mounting. Includes: Assemble Bracket And Mount Bracket. Unit Of Measure = Each.	2	\$10.33	\$ 20.66
OH4240I	Conductor, Extension, (bundled Conductor Considered As One Conductor), Up To 10'. Includes: Conductor, Temporary Jumper, And Splice's). Unit Of Measure = Each.	3	\$97.23	\$ 291.69
OH4040I	Crossarm Wood/fiberglass, Up To 10', Double. Includes: Drilling Pole, Crossarm, Braces And Mounting Hardware. Excludes Pins, Insulators, Deadends. Unit Of Measure = Each.	1	\$84.46	\$ 84.46
OH4040R	Crossarm Wood/fiberglass, Up To 10', Double. Includes: Drilling Pole, Crossarm, Braces And Mounting Hardware. Excludes Pins, Insulators, Deadends. Unit Of Measure = Each.	27	\$77.13	\$ 2,082.51
OH4030I	Crossarm, Wood/fiberglass, Up To 10', Single. Includes: Drilling Pole, Crossarm, Braces, And Mounting Hardware. Excludes Pins, Insulators, Deadends. Unit Of Measure = Each.	80	\$38.54	\$ 3,083.20
OH4030R	Crossarm, Wood/fiberglass, Up To 10', Single. Includes: Drilling Pole, Crossarm, Braces, And Mounting Hardware. Excludes Pins, Insulators, Deadends. Unit Of Measure = Each.	6	\$31.20	\$ 187.20
OH4410R	Cut Pole Top, Includes: Cut Pole And Remove Ground Wire As Required. Unit Of Measure =limit Of One Per Work Point	1	\$72.41	\$ 72.41
OH4110I	Cutout. Fused Or Solid Blade. Includes: Mount Cutout On Bracket As Required, Drill Hole's) As Required, Hardware, Cutout, And/or Bracket, Fuse, Jumper's) And Connection's). Unit Of Measure = Each.	29	\$53.26	\$ 1,544.54
OH4110R	Cutout. Fused Or Solid Blade. Includes: Mount Cutout On Bracket As Required, Drill Hole's) As Required, Hardware, Cutout, And/or Bracket, Fuse, Jumper's) And Connection's). Unit Of Measure = Each.	28	\$49.56	\$ 1,387.68
OH4080I	Dead-end Conductor, Primary, Larger Than 4/0 Wire. Includes: Insulator And/or Dead-end, Hardware, And Sagging. Unit Of Measure = Per Conductor.	48	\$56.14	\$ 2,694.72

Work Unit	Description	Estimated Quantity	Estimated Cost Per Unit	Estimated Cost
OH4080R	Dead-end Conductor, Primary, Larger Than 4/0 Wire. Includes: Insulator And/or Dead-end, Hardware, And Sagging. Unit Of Measure = Per Conductor.	6	\$41.47	\$ 248.82
OH4070I	Dead-end Conductor, Primary, Through 4/0 Wire. Includes: Insulator And/or Dead-end, Hardware, And Sagging. Unit Of Measure = Per Conductor.	144	\$30.79	\$ 4,433.76
OH4070R	Dead-end Conductor, Primary, Through 4/0 Wire. Includes: Insulator And/or Dead-end, Hardware, And Sagging. Unit Of Measure = Per Conductor.	100	\$16.28	\$ 1,628.00
OH4090I	Dead-end Conductor, Secondary Or Neutral, Any Size. Includes: Insulator And/or Dead-end, Hardware And Sag. Bundled Conductor Considered One Dead-end. Unit Of Measure = Each.	61	\$54.36	\$ 3,315.96
OH4090R	Dead-end Conductor, Secondary Or Neutral, Any Size. Includes: Insulator And/or Dead-end, Hardware And Sag. Bundled Conductor Considered One Dead-end. Unit Of Measure = Each.	41	\$27.15	\$ 1,113.15
OH4115R	Disconnect, By-pass, Xarm Rh And Lh Pole Mounting For Reclosers Or Regulators, 25kv, 600a. Unit Of Measure = Set Of Three.	1	\$148.70	\$ 148.70
OH4380I	Down Guy Or Pole To Pole Guy, Any Size, All Lengths. Includes: Pole And Anchor Attachment Hardware, Guy, Ground/guy Insulator As Required, Guy Tension, And Guy Guard. Unit Of Measure = Each.	45	\$55.05	\$ 2,477.25
OH4380R	Down Guy Or Pole To Pole Guy, Any Size, All Lengths. Includes: Pole And Anchor Attachment Hardware, Guy, Ground/guy Insulator As Required, Guy Tension, And Guy Guard. Unit Of Measure = Each.	30	\$34.84	\$ 1,045.20
OH4121I	In-line/underslung Disconnect. Includes: Assemble Disconnect And Deadends, Install Disconnect And Deadends, Temporary Jumper, Sag (as Required), Jumpers And Connections. Unit Of Measure = Set Of Three.	1	\$285.07	\$ 285.07
OH4100R	Insulator Or Messenger Clamp, All Voltages (excluding Dead-end Insulators), Primary Or Secondary. Includes: Insulator, Pin/rack, Drilling If Required, Hardware, And Securing Conductor To Insulator. (this Unit Will Cover Installing Spreaders In Rts On A Po	71	\$22.07	\$ 1,566.97
OH4100I	Insulator Or Messenger Clamp, All Voltages (excluding Dead-end Insulators), Primary Or Secondary. Includes: Insulator, Pin/rack, Drilling If Required, Hardware, And Securing Conductor To Insulator. Unit Of Measure = Each.	195	\$27.58	\$ 5,378.10
OH4102R	Insulator, Double Pin, All Voltages Primary. Includes: Insulator, Pin, Drilling If Required, Hardware, And Securing Conductor To Insulator. Unit Of Measure = Each.	2	\$32.99	\$ 65.98
OH4025I	Oh Jumper.permanent Includes Primary Or Secondary: Conductor , Any Necessary Tie , And Connections. Unit Of Measure = Each.	168	\$59.73	\$ 10,034.64
OH4025R	Oh Jumper.permanent Includes Primary Or Secondary: Conductor , Any Necessary Tie , And Connections. Unit Of Measure = Each.	81	\$27.13	\$ 2,197.53
OH4195R	Oh Secondary, Through 4/0, Through 4 Conductors. (does Not Include Bare Conductor) Includes: Secondary, Hardware, Connections On Both Ends, And Voltage Test. Excludes Set Up, Cover Up, And Field Assembled Secondary. Does Not Include Transfer. See Oh4200.	537	\$1.54	\$ 826.98
OH4195I	Oh Secondary, Through 4/0, Through 4 Conductors. (does Not Include Bare Conductor) Includes: Secondary, Hardware, Jumpers, Connections On Both Ends, And Voltage Test. Excludes Set Up, Cover Up, Deadends And Field Assembled Secondary. Does Not Include Tran	91	\$2.05	\$ 186.55
OH4010I	Oh Set-up, New Construction, Large Projects (4 Work Points Worked Or More) Per Work Point Worked. Includes: Truck Set-up/breakdown, Tailboard, Personal Protective Equipment, Work Area Protection, Normal Traffic Control And Cleanup. Excludes Services For S	59	\$51.74	\$ 3,052.66
OH4180I	Set Up/breakdown, Tensioner And Puller. Includes: Tensioner, Pulling Rig, Grounding, Pull Rope, Conductor Preparation And Conductor To First Roller. (any Number Of Conductors) Unit Of Measure = Each.	5	\$734.58	\$ 3,672.90
OH4130I	Switch, Loadbreak, Gang Operated Or Scadamate. Includes: Uncrate, Assemble, Mount Switch, Arrestors, Temporary Jumpers, Grounds, Wildlife Protection, Operate Switch, Adjust As Needed, And Cleanup. Excludes Permanent Jumpers Unit Of Measure = Each.	1	\$1,024.62	\$ 1,024.62
OH4130R	Switch, Loadbreak, Gang Operated Or Scadamate. Includes: Uncrate, Assemble, Mount Switch, Arrestors, Temporary Jumpers, Grounds, Wildlife Protection, Operate Switch, Adjust As Needed, And Cleanup. Excludes Permanent Jumpers Unit Of Measure = Each.	1	\$463.56	\$ 463.56
OH4330I	Transformer, Single Phase, 50kva And Below, Or Individual Capacitor Unit On Pole Or Platform. Includes: Transformer Leads/jumpers As Required, Connections, Wildlife Protection And Verify Voltage. Excludes Brackets. Unit Of Measure = Each.	1	\$141.30	\$ 141.30
OH4330R	Transformer, Single Phase, 50kva And Below, Or Individual Capacitor Unit On Pole Or Platform. Includes: Transformer Leads/jumpers As Required, Connections, Wildlife Protection And Verify Voltage. Excludes Brackets. Unit Of Measure = Each.	3	\$80.78	\$ 242.34
PS1120I	Anchor, Concrete, Machine Dig. Includes: Load Anchor/rod/concrete, Locates, Assemble Anchor, Setup/breakdown, Dig Hole, Install Anchor, Mix & Install Concrete, Rod Concrete, Backfill/tamp, Remove Spoil, And Cleanup. Use Only When Installing Anchors As Per	1	\$481.79	\$ 481.79
PS1090I	Anchor, Expanding/plate. Machine Dig. Includes: Load Anchor/rod, Locates, Assemble Anchor, Setup/breakdown, Dig Hole, Install Anchor W/ Rod, Backfill, Tamp, And Cleanup. Unit Of Measure = Each.	45	\$171.71	\$ 7,726.95
PS1160I	Ground Rod, Dirt. Includes: Load Ground Rod, Clamp, Connector, Conductor As Required, Locates, Excavate Site, Install Ground Rod, Install Conductor, Make Connections, Backfill, And Cleanup. Unit Of Measure = Each.	16	\$52.47	\$ 839.52
PS1010I	Pole, Wood, 50' Through 60', Machine Dig With Auger. Includes: Haul Pole, Locates, Setup/teardown, Dig Hole, Grounding/guard As Required, Locates, Set Pole, Backfill, Tamp Or Foam As Required, Pole Plate, Fln, Driven Ground (removal Only), Cleanup, And Ha	34	\$483.07	\$ 16,424.38
PS1010R	Pole, Wood, 50' Through 60', Machine Dig With Auger. Includes: Haul Pole, Locates, Setup/teardown, Dig Hole, Grounding/guard As Required, Locates, Set Pole, Backfill, Tamp Or Foam As Required, Pole Plate, Fln, Driven Ground (removal Only), Cleanup, And Ha	5	\$221.54	\$ 1,107.70
PS1032I	Pole, Wood, 65', Machine Dig With Auger. Includes: Haul Pole, Locates, Setup/teardown, Dig Hole, Grounding/guard As Required, Set Pole, Backfill, Tamp Or Foam As Required, Pole Plate, Fln, Driven Ground (removal Only), Cleanup And Haul-off Of Spoil. Unit	4	\$569.83	\$ 2,279.32
PS1000I	Pole, Wood, Through 45', Machine Dig With Auger. Includes: Haul Pole, Locates, Setup/teardown, Dig Hole, Grounding/guard As Required, Set Pole, Backfill, Tamp Or Foam As Required, Pole Plate, Fln, Driven Ground (removal Only), Cleanup And Haul-off Of Spoil	10	\$363.84	\$ 3,638.40

Work Unit	Description	Estimated Quantity	Estimated Cost Per Unit	Estimated Cost
PS1000R	Pole, Wood, Through 45', Machine Dig With Auger. Includes: Haul Pole, Locates, Setup/teardown, Dig Hole, Grounding/guard As Required, Set Pole, Backfill, Tamp Or Foam As Required, Pole Plate, Fln, Driven Ground (removal Only), Cleanup And Haul-off Of Spoi	23	\$238.71	\$ 5,490.33
SV9000R	Oh Service, Duplex Or Triplex, Any Size, Any Length. Includes: Setup/breakdown, Any Necessary Cover, Service, Decadents), Hardware, Connections On Both Ends, Sag, Voltage Test, And Cleanup. (removal Includes Open Wire Or Bundled.) Excludes Field Assembled	5	\$114.28	\$ 571.40
UT6030I	Pole Riser, Through 3". Includes: Setup/breakdown, Hardware, Conduit W/pull String And Brackets As Needed. Unit Of Measure = Each.	3	\$187.81	\$ 563.43
UT6030R	Pole Riser, Through 3". Includes: Setup/breakdown, Hardware, Conduit W/pull String And Brackets As Needed. Unit Of Measure = Each.	3	\$137.05	\$ 411.15
SL8100R	Additional Streetlight Arm And Luminaire Or Guardlight. Includes: Arm, Luminaire, Lamp, Photo Electric Cell, Conductor, And Connection. Unit Of Measure = Each.	1	\$44.88	\$ 44.88
SL8000R	Streetlight, Arm/head Assembly On Standard Or Wood Pole Through 6'. Includes: Setup/breakdown, Arm, Head, Photocell, Wiring/fuse, Connections, Ground, Associated Mounting Hardware And Test. Unit Of Measure = Each.	4	\$71.10	\$ 284.40
	Additional Labor to install concrete poles, for pole depths, concrete, labor & crane	4	\$7,740.00	\$ 30,960.00
<b>TOTALS</b>				<b>\$154,340.90</b>





**ONCOR Project:** 3264595  
**TXDOT U-No.:** U14696  
**District:** AUSTIN  
**County:** WILLIAMSON  
**Federal Proj. No.:** N/A  
**ROW CSJ No.:** 0683-01-092  
**CCSJ No:** Const CSJ:  
**Highway No.:** RM 620  
**From:** DEEPWOOD DRIVE  
**To:** IH-35

### Attachment "A" Material List

Buy America	Estimated Quantity	Estimate Unit		Description	Estimated Cost Per Unit	Estimated Cost
<b>Buy America Hardware</b>						
E	1	EA	300602	Line Hardware,Bracket, Terminator and Ar	\$ 40.35	\$ 40.35
E	9	EA	302049	Fasteners,Nut, Oval Eye, 11 Tpi, Galv	\$ 4.17	\$ 37.53
E	67	EA	302050	Fasteners,Nut, Oval Eye, 10 Tpi, Galv	\$ 1.08	\$ 72.36
E	8	EA	302420	Fasteners,Washer, Round, 7/16 in ID, 3/8	\$ 0.04	\$ 0.32
E	6	EA	302428	Fasteners,Washer, Lock, 1/2 IN	\$ 0.03	\$ 0.18
E	6	EA	302437	Fasteners,Washer, Round, 9/16 in ID, 1/2	\$ 0.07	\$ 0.42
E	1	EA	303568	Fasteners,Screw, Lag, 2.5 IN, Fetter Dri	\$ 0.52	\$ 0.52
E	1	EA	304160	Line Hardware,Bracket, Cutout/Arrester	\$ 5.07	\$ 5.07
E	39	EA	304173	Line Hardware,Insulator Pin	\$ 3.54	\$ 138.06
E	44	EA	304175	Line Hardware,Plate, Pole Eye, Galv Duct	\$ 5.36	\$ 235.84
E	1	EA	304176	Line Hardware,Plate, Pole Eye, Double Ey	\$ 44.76	\$ 44.76
E	8	EA	304792	Fasteners,Bolt, Mach, Square	\$ 0.50	\$ 4.00
E	288	EA	305172	Fasteners,Washer, Square, 13/16 IN, 3/4	\$ 1.35	\$ 388.80
E	324	EA	305174	Fasteners,Washer, Square, 13/16 IN, 3/4	\$ 0.19	\$ 61.56
E	18	EA	305605	Line Hardware,Bracket, Cutout Mounting,	\$ 8.98	\$ 161.64
E	19	EA	308159	Line Hardware,Pin Crossarm, Gs, 5/8 X 1-	\$ 3.20	\$ 60.80
E	18	EA	308167	Fasteners,Screw, Lag, 1.75 IN, Fetter Dr	\$ 0.31	\$ 5.58
E	58	EA	309949	Line Hardware,Rack, Secondary, 1 Pt Clev	\$ 1.83	\$ 106.14
E	1	EA	310006	Anchor Disc-type 15in Nom DIA for 3/4IN ROD 177 SQ	\$ 23.13	\$ 23.13
E	1	EA	310009	Line Hardware,Anchor Rod, Twineye, 3/4 i	\$ 34.57	\$ 34.57
E	1	EA	310626	Line Hardware,Hook, Drive	\$ 0.50	\$ 0.50
E	5	EA	310630	Line Hardware,Anchor Rod, Twineye, 3/4 i	\$ 12.52	\$ 62.60
E	6	EA	311172	Fasteners,Bolt, Gr A, Hex	\$ 0.18	\$ 1.08
E	6	EA	311350	Line Hardware,Link, Extension, Clevis-Ey	\$ 6.52	\$ 39.12
E	162	EA	323811	Fasteners,Washer, Curved Plate, 13/16 IN	\$ 1.59	\$ 257.58
E	8	EA	902762	Line Hardware,Bracket, Cutout Mounting,	\$ 11.55	\$ 92.40
					TOTAL	\$ 1,874.91
<b>The sum total of cost of Buy America line items did not exceed the \$2500 exempting threshold</b>						\$ 2,500.00
<b>Amount below threshold</b>						\$ 625.09
<b>Buy America Requiring Compliance</b>						
CL	3	EA	301580	Fasteners,Bolt, Double Arming, Full	\$ 4.20	\$ 12.60
CL	131	EA	301587	Fasteners,Bolt, Mach, Square	\$ 2.75	\$ 360.25
CL	40	EA	313508	Line Hardware,Anchor Rod, Tripleye, 1 in	\$ 47.72	\$ 1,908.80
CL	140	EA	301609	Fasteners,Bolt, Oval Eye	\$ 3.64	\$ 509.60
CL	132	EA	301636	Fasteners,Bolt, Mach, Square	\$ 1.75	\$ 231.00



	16	EA	300008	Connector,Clamp, Hotline	\$ 14.19	\$ 227.04
	1	EA	311277	Connector,Clamp, Perp Clevis, Angle Susp	\$ 7.17	\$ 7.17
	26	EA	304185	Connector,Grip, Deadend, Guywire, Black,	\$ 1.42	\$ 36.92
	6	EA	305481	Connector,Grip, Deadend, Slack Span, Alo	\$ 4.39	\$ 26.34
	36	EA	305482	Connector,Grip, Deadend, Slack Span, Alo	\$ 4.26	\$ 153.36
	26	EA	305482	Connector,Grip, Deadend, Slack Span, Alo	\$ 4.26	\$ 110.76
	3	EA	304139	Connector,Grip, Deadend, Slack Span, Gre	\$ 6.79	\$ 20.37
	9	EA	304138	Connector,Grip, Deadend, Slack Span, Ora	\$ 5.66	\$ 50.94
	36	EA	304141	Connector,Grip, Deadend, Slack Span, Ora	\$ 6.11	\$ 219.96
	221	EA	304840	Connector,H-Body, Compression, Al, Al-Al	\$ 0.33	\$ 72.93
	6	EA	300514	Connector,Terminal, Lug	\$ 4.43	\$ 26.58
	3	EA	300197	Connector,Wedge, Impact, Al Alloy Body,	\$ 21.09	\$ 63.27
	6	EA	300214	Connector,Wedge, Impact, Al Alloy Body,	\$ 10.39	\$ 62.34
	9	EA	304962	Connector,Wedge, Impact, Al Alloy Body,	\$ 21.09	\$ 189.81
	54	EA	329516	Connector,Wedge, Impact, Al Alloy Body,	\$ 21.18	\$ 1,143.72
	60	FT	311596	Electrical Supplies,Conduit, PVC, 80, 2	\$ 0.94	\$ 56.40
	30	FT	311596	Electrical Supplies,Conduit, PVC, 80, 2	\$ 0.94	\$ 28.20
	16	EA	300524	Electrical Supplies,Rod, Ground, Copper	\$ 9.82	\$ 157.12
	6	EA	397340	Electrical Supplies,Strap, Conduit, 4 Ho	\$ 2.16	\$ 12.96
	3	EA	397340	Electrical Supplies,Strap, Conduit, 4 Ho	\$ 2.16	\$ 6.48
	3	EA	302780	Fuse,Cutout, Open, Single Vent, 25 KV, 1	\$ 48.86	\$ 146.58
	26	EA	302780	Fuse,Cutout, Open, Single Vent, 25 KV, 1	\$ 48.86	\$ 1,270.36
	3	EA	302610	Fuse,Link, Removable Buttonhead, Univers	\$ 4.56	\$ 13.68
	6	EA	310644	Fuse,Link, Removable Buttonhead, Univers	\$ 4.29	\$ 25.74
	14	EA	479045	Fuse,Link, Removable Buttonhead, Univers	\$ 4.33	\$ 60.62
	2	EA	479064	Fuse,Link, Removable Buttonhead, Univers	\$ 4.56	\$ 9.12
	2	LB	302064	Industrial,Duct_Seal, Compound, Pliable	\$ 2.96	\$ 5.92
	1	LB	302064	Industrial,Duct_Seal, Compound, Pliable	\$ 2.96	\$ 2.96
	1	EA	408246	Industrial,Label, Fin (Facilities Locafi	\$ 0.61	\$ 0.61
	9	EA	476045	Industrial,Label, Fin (Facilities Locafi	\$ 1.30	\$ 11.70
	1	EA	314422	Industrial,Lock, Substation and General	\$ 6.49	\$ 6.49
	1	EA	314422	Industrial,Lock, Substation and General	\$ 6.49	\$ 6.49
	54	EA	314428	Industrial,Plate, FLN, 6 X 5 X 0.018 IN,	\$ 0.97	\$ 52.36
	26	EA	302995	Insulator,Guy, Guy Strain, 15000-LB, 36.	\$ 11.55	\$ 300.30
	18	EA	302993	Insulator,Guy, Guy Strain, 21000 LB, 36.	\$ 15.91	\$ 286.38
	2	EA	302993	Insulator,Guy, Guy Strain, 21000 LB, 36	\$ 15.91	\$ 31.82
	4	EA	302977	Insulator,Pin, Radio Free, F-Neck, Gray,	\$ 4.46	\$ 17.84
	15	EA	302977	Insulator,Pin, Radio Free, F-Neck, Gray,	\$ 4.46	\$ 66.90
	101	EA	302977	Insulator,Pin, Radio Free, F-Neck, Gray,	\$ 4.46	\$ 450.46
	3	EA	302977	Insulator,Pin, Radio Free, F-Neck, Gray,	\$ 4.46	\$ 13.38
	43	EA	302977	Insulator,Pin, Radio Free, F-Neck, Gray,	\$ 4.46	\$ 191.78
	4	EA	302977	Insulator,Pin, Radio Free, F-Neck, Gray,	\$ 4.46	\$ 17.84
	3	EA	302977	Insulator,Pin, Radio Free, F-Neck, Gray,	\$ 4.46	\$ 13.38
	3	EA	302977	Insulator,Pin, Radio Free, F-Neck, Gray,	\$ 4.46	\$ 13.38
	33	EA	302977	Insulator,Pin, Radio Free, F-Neck, Gray,	\$ 4.46	\$ 147.18
	3	EA	302977	Insulator,Pin, Radio Free, F-Neck, Gray,	\$ 4.46	\$ 13.38
	49	EA	302989	Insulator,Spool, Spool, Secondary, Gray,	\$ 0.59	\$ 28.91
	9	EA	302989	Insulator,Spool, Spool, Secondary, Gray,	\$ 0.59	\$ 5.31
	59	EA	315035	Insulator,Suspension, Suspension, 25 KV	\$ 12.56	\$ 741.04
	33	EA	315035	Insulator,Suspension, Suspension, 25 KV	\$ 12.56	\$ 414.48
	7	EA	315035	Insulator,Suspension, Suspension, 25 KV	\$ 12.56	\$ 87.92
	3	EA	315035	Insulator,Suspension, Suspension, 25 KV	\$ 12.56	\$ 37.68
	22	EA	304229	Line Hardware,Anchor, Plate, 8 Way Expan	\$ 17.30	\$ 380.60
	18	EA	310003	Line Hardware,Anchor, Plate, Expanding	\$ 29.52	\$ 531.36
	5	EA	310004	Line Hardware,Anchor, Plate, Expanding	\$ 8.43	\$ 42.15

20	EA	302860	Line Hardware,Bracket, Standoff, 15 Deg	\$ 25.06	\$ 501.20
26	EA	304186	Line Hardware,Guy_Guard, Marker, 8.0 FT,	\$ 1.90	\$ 49.40
18	EA	304186	Line Hardware,Guy_Guard, Marker, 8.0 FT,	\$ 1.90	\$ 34.20
2	EA	304186	Line Hardware,Guy_Guard, Marker, 8.0 FT,	\$ 1.90	\$ 3.80
3	EA	305427	Line Hardware,Tie, Conductor, Double, Si	\$ 7.72	\$ 23.16
9	EA	305515	Line Hardware,Tie, Conductor, Double, Si	\$ 5.99	\$ 53.91
36	EA	305516	Line Hardware,Tie, Conductor, Double, Si	\$ 6.09	\$ 219.24
60	EA	305434	Line Hardware,Tie, Conductor, Single, To	\$ 2.26	\$ 135.60
3	EA	305438	Line Hardware,Tie, Conductor, Single, To	\$ 3.50	\$ 10.50
9	EA	305438	Line Hardware,Tie, Conductor, Single, To	\$ 3.50	\$ 31.50
64	EA	305439	Line Hardware,Tie, Conductor, Single, To	\$ 3.92	\$ 250.88
1	EA	305428	Line Hardware,Tie, Conductor, Spool, 1-3	\$ 1.95	\$ 1.95
40	EA	305429	Line Hardware,Tie, Conductor, Spool, 1-3	\$ 2.06	\$ 82.40
10	EA	301539	Pole,Wood, Dist, 55 FT, CI 3	\$ 688.41	\$ 6,884.10
2	EA	302414	Pole,Wood, Distribution, 40 FT, CI 3	\$ 348.22	\$ 696.44
9	EA	301534	Pole,Wood, Distribution, 45 FT, CI 3	\$ 350.37	\$ 3,153.33
2	EA	301536	Pole,Wood, Distribution, 50 FT, CI 1	\$ 578.22	\$ 1,156.44
11	EA	301535	Pole,Wood, Distribution, 50 FT, CI 3	\$ 457.04	\$ 5,027.44
2	EA	307364	Pole,Wood, Distribution, 55 FT, CI 1	\$ 671.69	\$ 1,343.38
7	EA	310363	Pole,Wood, Transmission, 60 FT, CI 3, Ro	\$ 556.70	\$ 3,896.90
5	EA	301545	Pole,Wood, Transmission, 65 FT, CI 3, Ro	\$ 974.52	\$ 4,872.60
38	EA	318482	Protection,Guard, Wildlife	\$ 3.13	\$ 118.94
2	EA	302881	Structure,Brace, Crossarm, 38 IN, Penta	\$ 2.85	\$ 5.70
6	EA	302881	Structure,Brace, Crossarm, 38 IN, Penta	\$ 2.85	\$ 17.10
2	EA	452499	Structure,Bracket, Transf Mtg, Wing Type	\$ 109.07	\$ 218.14
32	EA	481628	Structure,Crossarm, Deadend, Braceless	\$ 230.01	\$ 7,360.32
1	EA	482990	Structure,Crossarm, Deadend, Braceless	\$ 256.94	\$ 256.94
2	EA	302884	Structure,Crossarm, Dist, Penta Treated	\$ 21.05	\$ 42.10
3	EA	302884	Structure,Crossarm, Dist, Penta Treated	\$ 21.05	\$ 63.15
42	EA	503934	Structure,Crossarm, Standard Tangent, Br	\$ 112.03	\$ 4,705.26
2	EA	503935	Structure,Crossarm, Standard Tangent, Br	\$ 130.16	\$ 260.32
51	KT	314040	Structure,Foam, 7 CF, 70 Psi Minimum Com	\$ 83.25	\$ 4,245.75
1	EA	397346	Structure,Pedestal, Ug Serv, HDPE, 10 X	\$ 157.90	\$ 157.90
1	EA	429545	Switch,Mv, Airbreak, Symm Horiz Break, 3	\$ 2,278.89	\$ 2,278.89
3	EA	303024	Switch,Switch_Disconnect, Line Tension,	\$ 188.82	\$ 566.46
				<b>TOTAL</b>	<b>\$ 133,148.69</b>
<b>TOTAL With Buy America and Non Buy America</b>					<b>\$ 165,732.14</b>

**X**

Materials indicated with "C" are to be 'Buy America' compliant.

**X**

Materials indicated with "E" total under \$2,500.00 in accordance with 'Buy America' project exemption outlined in 23 CFR 635.410(b)(4).

**X**

Materials indicated with "CL" are for compliant (minor) hardware items requiring general Manufacturers' written certification letters to be 'Buy America' compliant as outlined in Charon Williams' email of 5/31/2018 with (revised) TxDOT BUY AMERICA guidance attached. Oncor maintains these certification letters on-file at its Corporate Headquarters."

All Materials contained in this listing are exempt from 'Buy America' provisions

Utility agrees to comply with Buy America provisions in accordance with TxDOT / FHWA guidance for

Initial	Date
Initial	Date

<i>J.A.</i> Initial	<i>8-23-2018</i> Date
Initial	Date






ONCOR Project: 3264595  
 TXDOT U-No.: U14696  
 District: AUSTIN  
 County: WILLIAMSON  
 Federal Proj. No.: N/A  
 ROW CSJ No.: 0683-01-092  
 Const CSJ: N/A  
 Highway No.: RM 620  
 From: DEEPWOOD DRIVE  
 To: IH-35

Attachment "A"					
Voucher Estimate					
Buy America	Description	Quantity	Unit	Estimated Cost Per Unit	Estimated Total Cost
	SURVEYING	6	DAYS	\$ 900.00	\$ 5,400.00
	TREE TRIMMING	14	DAYS	\$ 1,250.00	\$ 17,500.00
					\$ -
					\$ -
					\$ -
					\$ -
					\$ -
					\$ -
					\$ 22,900.00

- Materials indicated with \* are to be 'Buy America' compliant.
- All materials contained in this listing are exempt from 'Buy America' provisions.

Utility agrees to comply with Buy America provisions in accordance with TxDOT / FHWA guidance for all utility work performed and accomplished in furtherance of this agreement. Certification, where indicated, will be provided with the FINAL billing

\_\_\_\_\_  
 Initial                      Date  
 TxDOT

 \_\_\_\_\_  
 Initial                      Date  
 Utility



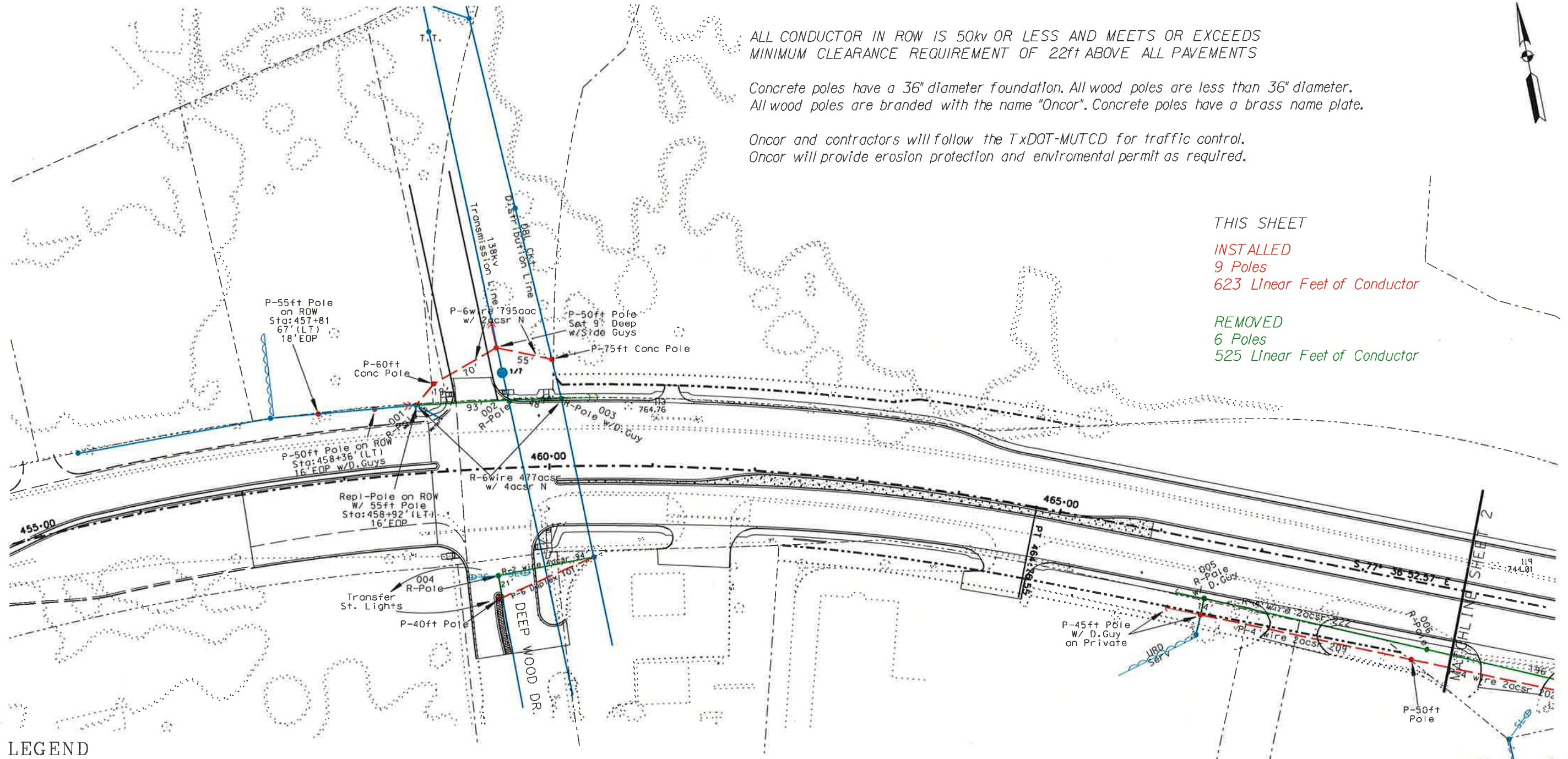
ALL CONDUCTOR IN ROW IS 50kv OR LESS AND MEETS OR EXCEEDS MINIMUM CLEARANCE REQUIREMENT OF 22ft ABOVE ALL PAVEMENTS

Concrete poles have a 36" diameter foundation. All wood poles are less than 36" diameter. All wood poles are branded with the name "Oncor". Concrete poles have a brass name plate.

Oncor and contractors will follow the TxDOT-MUTCD for traffic control. Oncor will provide erosion protection and environmental permit as required.

THIS SHEET  
**INSTALLED**  
 9 Poles  
 623 Linear Feet of Conductor

**REMOVED**  
 6 Poles  
 525 Linear Feet of Conductor

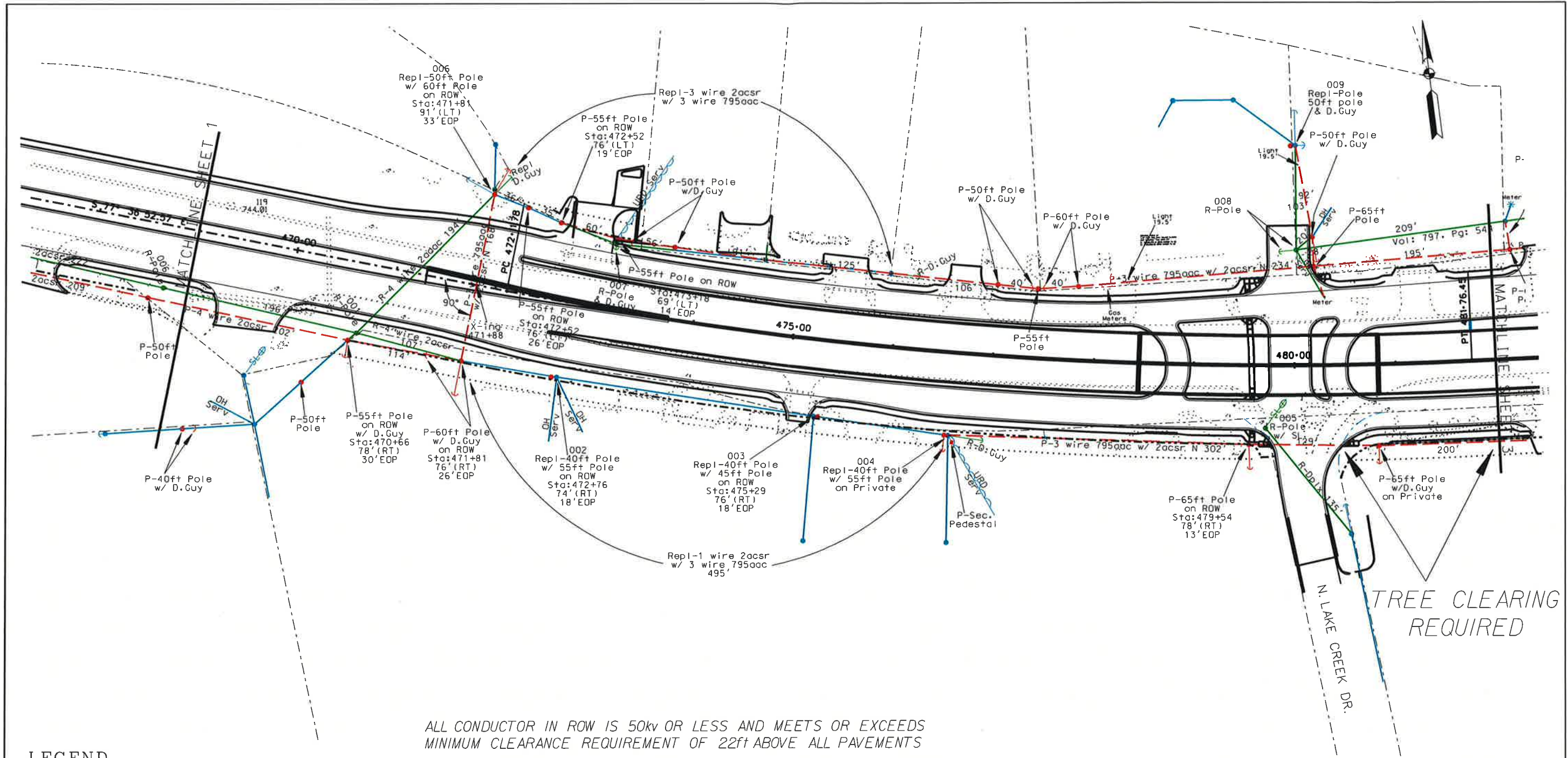


**LEGEND**

- PROPOSED POLES/DOWNGUYS
- EXISTING POLES/DOWNGUYS TO BE REMOVED
- EXISTING POLES/DOWNGUYS TO REMAIN IN PLACE
- PROPOSED OVERHEAD CONDUCTORS
- EXISTING OVERHEAD CONDUCTORS TO BE REMOVED
- EXISTING OVERHEAD CONDUCTORS TO REMAIN IN PLACE
- = PROPOSED UNDERGROUND CONDUCTORS
- = EXISTING CONDUCTOR TO BE REMOVED
- = EXISTING CONDUCTORS TO REMAIN IN PLACE

Sheet 1 of 4 WR 3264595

<b>ONCOR ELECTRIC DELIVERY</b> <b>ROUND ROCK DISTRICT</b>
<b>CITY OF ROUND ROCK</b> <b>R.M. 620</b> <b>ROAD WIDENING</b> <b>WILLIAMSON COUNTY</b>
Scale: 1" = 100'      Date: 6-25-18



**LEGEND**

- PROPOSED POLES/DOWNGUYS
- EXISTING POLES/DOWNGUYS TO BE REMOVED
- EXISTING POLES/DOWNGUYS TO REMAIN IN PLACE
- PROPOSED OVERHEAD CONDUCTORS
- EXISTING OVERHEAD CONDUCTORS TO BE REMOVED
- EXISTING OVERHEAD CONDUCTORS TO REMAIN IN PLACE
- ⌒ PROPOSED UNDERGROUND CONDUCTORS
- ⌒ EXISTING CONDUCTOR TO BE REMOVED
- ⌒ EXISTING CONDUCTORS TO REMAIN IN PLACE

ALL CONDUCTOR IN ROW IS 50kv OR LESS AND MEETS OR EXCEEDS MINIMUM CLEARANCE REQUIREMENT OF 22ft ABOVE ALL PAVEMENTS

Concrete poles have a 36" diameter foundation. All wood poles are less than 36" diameter. All wood poles are branded with the name "Oncor". Concrete poles have a brass name plate.

Oncor and contractors will follow the TxDOT-MUTCD for traffic control. Oncor will provide erosion protection and environmental permit as required.

007 - Cab: L, Sid: 326

008,009 - V: 1126, P: 312 - Cab: F, Sid: 290

**THIS SHEET**

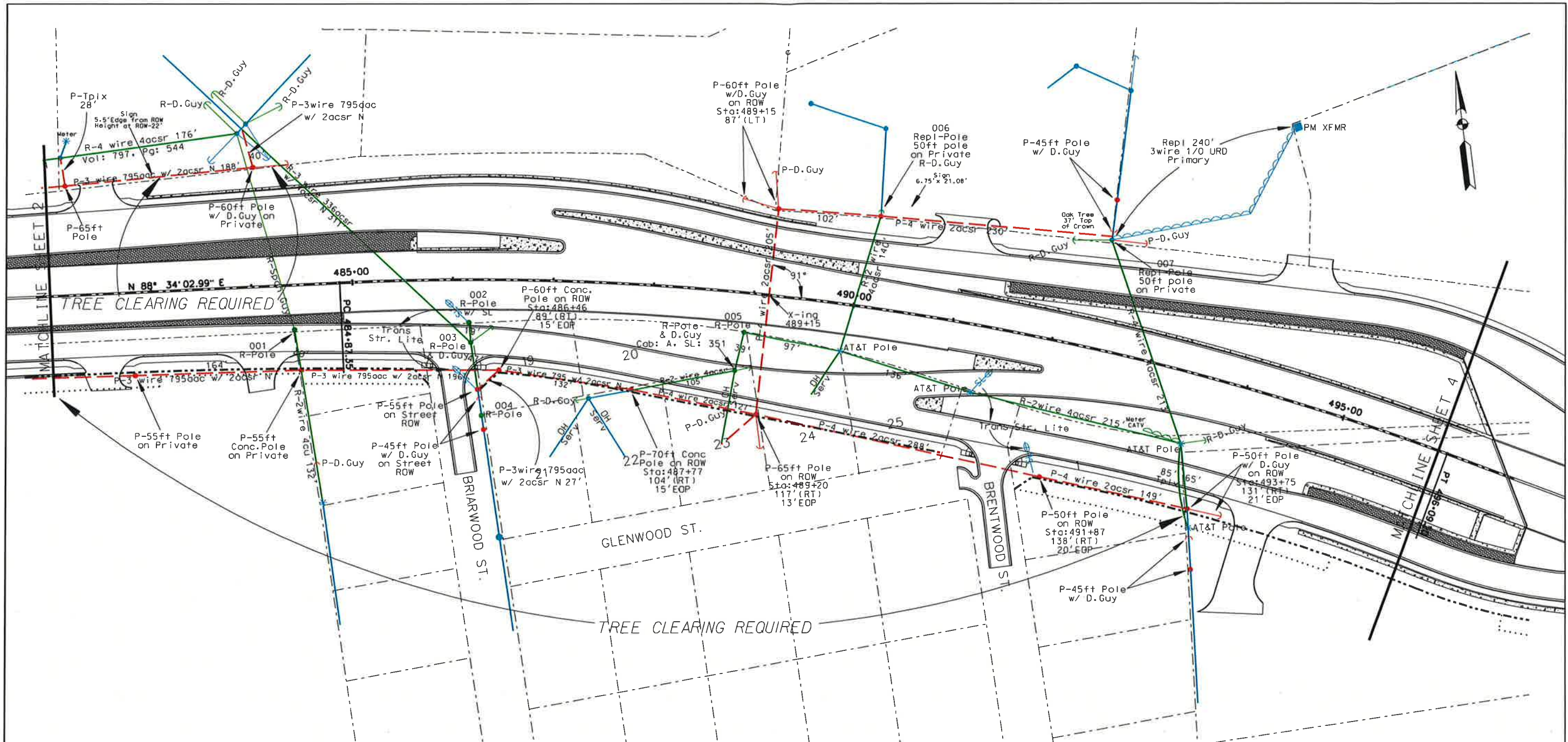
**INSTALLED**  
 20 Poles  
 2651 Linear Feet of Conductor

**REMOVED**  
 9 Poles  
 1911 Linear Feet of Conductor

Sheet 2 of 4 WR 3264595

ONCOR ELECTRIC DELIVERY ROUND ROCK DISTRICT
CITY OF ROUND ROCK R.M. 620 ROAD WIDENING WILLIAMSON COUNTY
Scale: 1" = 100'      Date: 6-25-18





**LEGEND**

- PROPOSED POLES/DOWNGUYS
- EXISTING POLES/DOWNGUYS TO BE REMOVED
- EXISTING POLES/DOWNGUYS TO REMAIN IN PLACE
- PROPOSED OVERHEAD CONDUCTORS
- EXISTING OVERHEAD CONDUCTORS TO BE REMOVED
- EXISTING OVERHEAD CONDUCTORS TO REMAIN IN PLACE
- B PROPOSED UNDERGROUND CONDUCTORS
- B EXISTING CONDUCTOR TO BE REMOVED
- B EXISTING CONDUCTORS TO REMAIN IN PLACE

ALL CONDUCTOR IN ROW IS 50kv OR LESS AND MEETS OR EXCEEDS MINIMUM CLEARANCE REQUIREMENT OF 22ft ABOVE ALL PAVEMENTS

Concrete poles have a 36" diameter foundation. All wood poles are less than 36" diameter. All wood poles are branded with the name "Oncor". Concrete poles have a brass name plate.

Oncor and contractors will follow the TxDOT-MUTCD for traffic control. Oncor will provide erosion protection and enviromental permit as required.

003,- Vol 498,Pg 560

00,004,005,008 - Cab: A,Slid: 351

006,007 - Cab: E,Slid: 203 - V: 446,P: 26

*THIS SHEET*

INSTALLED  
16 Poles  
1946 Linear Feet of Conductor

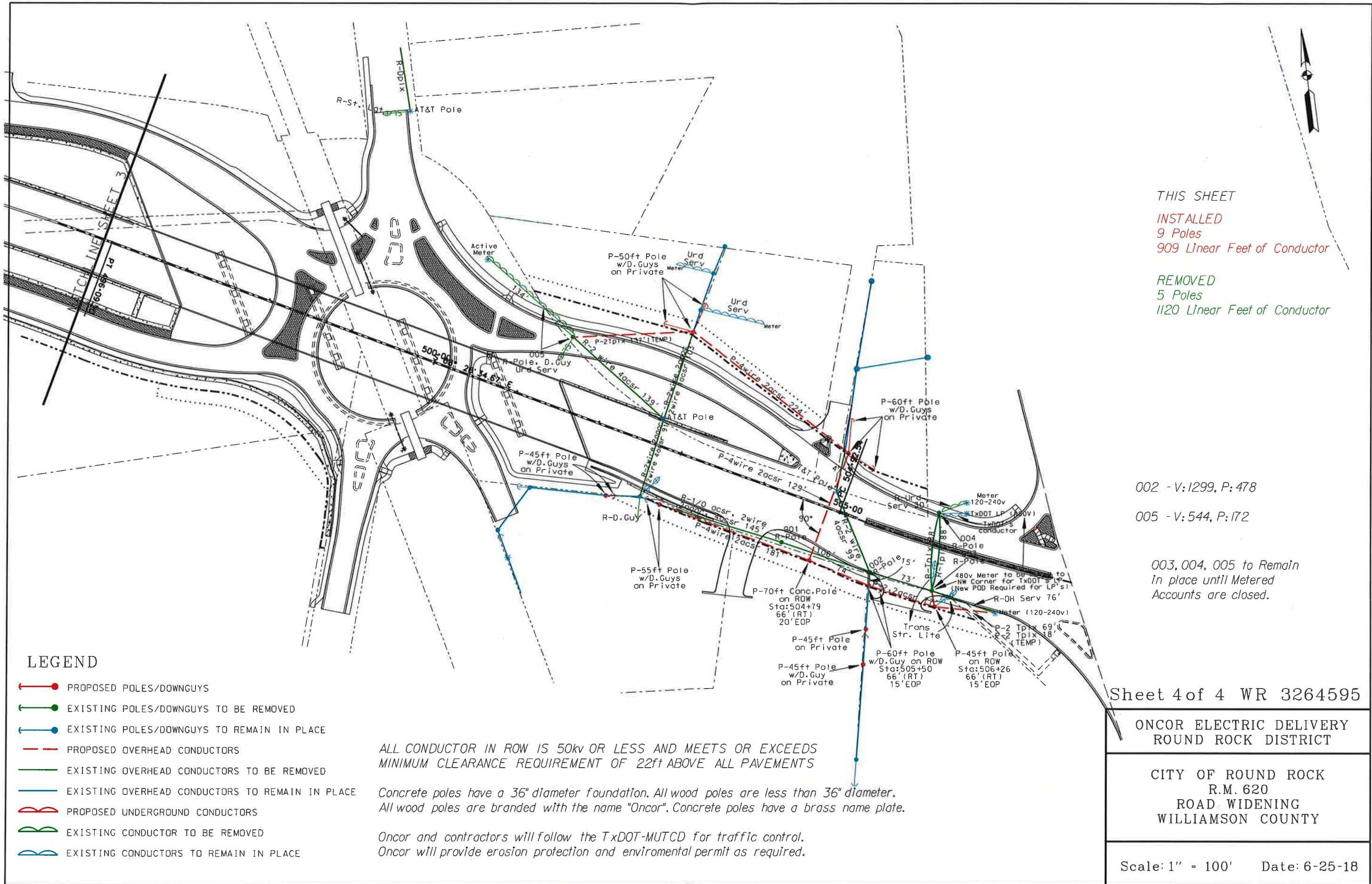
REMOVED  
8 Poles  
1292 Linear Feet of Conductor

Sheet 3 of 4 WR 3264595

ONCOR ELECTRIC DELIVERY  
 ROUND ROCK DISTRICT

CITY OF ROUND ROCK  
 R.M. 620  
 ROAD WIDENING  
 WILLIAMSON COUNTY

Scale: 1" = 100' Date: 6-25-18



THIS SHEET  
 INSTALLED  
 9 Poles  
 909 Linear Feet of Conductor

REMOVED  
 5 Poles  
 1120 Linear Feet of Conductor

002 - V:1299, P: 478  
 005 - V: 544, P: 172

003, 004, 005 to Remain  
 In place until Metered  
 Accounts are closed.

**LEGEND**

- PROPOSED POLES/DOWNGUYS
- EXISTING POLES/DOWNGUYS TO BE REMOVED
- EXISTING POLES/DOWNGUYS TO REMAIN IN PLACE
- PROPOSED OVERHEAD CONDUCTORS
- EXISTING OVERHEAD CONDUCTORS TO BE REMOVED
- EXISTING OVERHEAD CONDUCTORS TO REMAIN IN PLACE
- = PROPOSED UNDERGROUND CONDUCTORS
- = EXISTING CONDUCTOR TO BE REMOVED
- = EXISTING CONDUCTORS TO REMAIN IN PLACE

ALL CONDUCTOR IN ROW IS 50kv OR LESS AND MEETS OR EXCEEDS  
 MINIMUM CLEARANCE REQUIREMENT OF 22ft ABOVE ALL PAVEMENTS

Concrete poles have a 36" diameter foundation. All wood poles are less than 36" diameter.  
 All wood poles are branded with the name "Oncor". Concrete poles have a brass name plate.

Oncor and contractors will follow the TxDOT-MUTCD for traffic control.  
 Oncor will provide erosion protection and environmental permit as required.

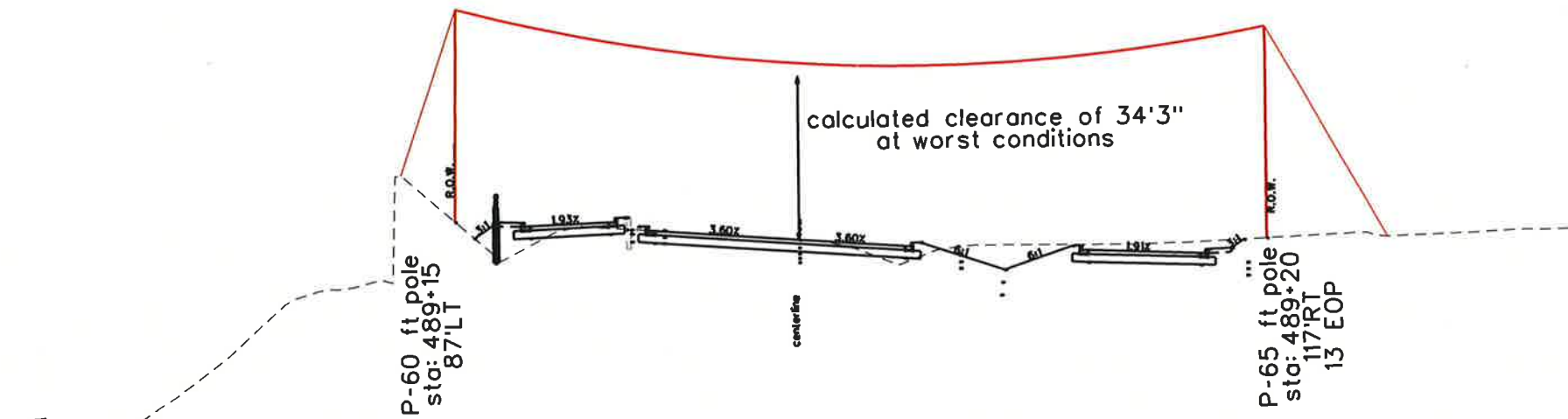
Sheet 4 of 4 WR 3264595

ONCOR ELECTRIC DELIVERY  
 ROUND ROCK DISTRICT

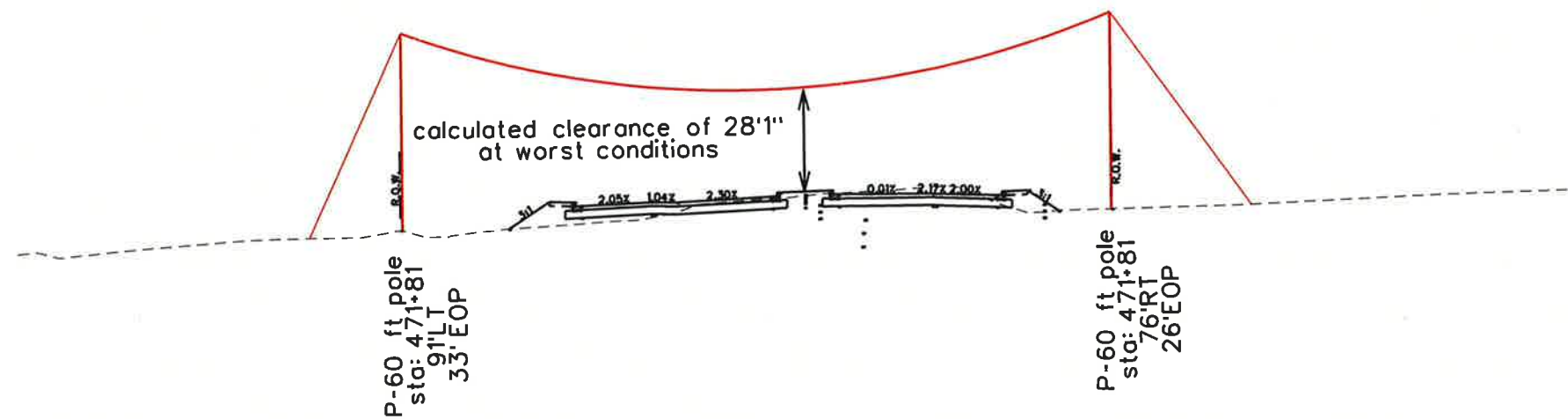
CITY OF ROUND ROCK  
 R.M. 620  
 ROAD WIDENING  
 WILLIAMSON COUNTY

Scale: 1" = 100' Date: 6-25-18

CROSSING  
489+15



CROSSING  
471+88



LEGEND

- PROPOSED POLES/DOWNGUYS
- EXISTING POLES/DOWNGUYS TO BE REMOVED
- EXISTING POLES/DOWNGUYS TO REMAIN IN PLACE
- PROPOSED OVERHEAD CONDUCTORS
- EXISTING OVERHEAD CONDUCTORS TO BE REMOVED
- EXISTING OVERHEAD CONDUCTORS TO REMAIN IN PLACE
- PROPOSED UNDERGROUND CONDUCTORS
- EXISTING CONDUCTOR TO BE REMOVED
- EXISTING CONDUCTORS TO REMAIN IN PLACE

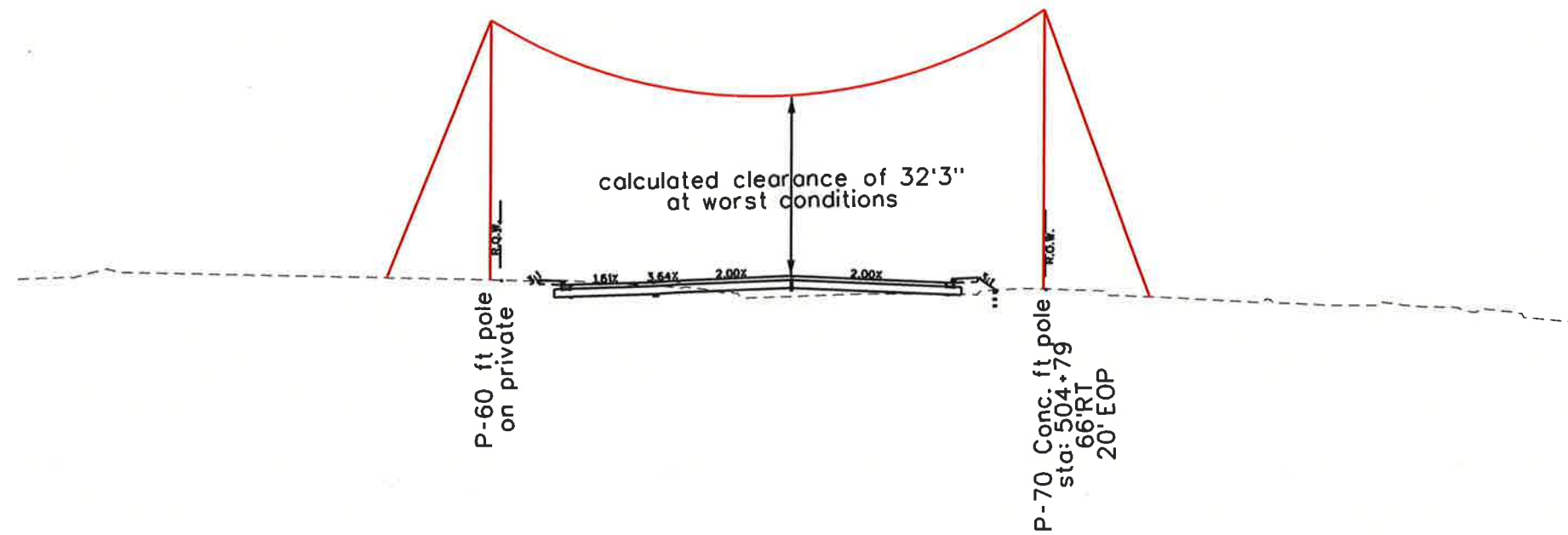
Sheet 1 of 2 WR 3264595

ONCOR ELECTRIC DELIVERY  
ROUND ROCK DISTRICT

CITY OF ROUND ROCK  
R.M. 620  
ROAD WIDENING  
WILLIAMSON COUNTY

NOT TO SCALE Date: 6-22-2018

CROSSING  
504+79



LEGEND

- PROPOSED POLES/DOWNGUYS
- EXISTING POLES/DOWNGUYS TO BE REMOVED
- EXISTING POLES/DOWNGUYS TO REMAIN IN PLACE
- PROPOSED OVERHEAD CONDUCTORS
- EXISTING OVERHEAD CONDUCTORS TO BE REMOVED
- EXISTING OVERHEAD CONDUCTORS TO REMAIN IN PLACE
- ⌒ PROPOSED UNDERGROUND CONDUCTORS
- ⌒ EXISTING CONDUCTOR TO BE REMOVED
- ⌒ EXISTING CONDUCTORS TO REMAIN IN PLACE

Sheet 2 of 2 WR 3264595

ONCOR ELECTRIC DELIVERY  
ROUND ROCK DISTRICT

CITY OF ROUND ROCK  
R.M. 620  
ROAD WIDENING  
WILLIAMSON COUNTY

NOT TO SCALE Date: 6-22-2018



Electric Delivery LLC

ONCOR Project: 3264595  
TXDOT U-No.: U14696  
District: AUSTIN  
County: WILLIAMSON  
Federal Proj. No.: N/A  
ROW CSJ No.: 0683-01-092  
Const CSJ: N/A  
Highway No.: RM 620  
From: DEEPWOOD DRIVE  
To: IH-35

**Attachment "B"**  
*Utility Accounting Method*

- X** **Actual Cost Method of Accounting**

The "Actual Cost Method of Accounting" should be designated on Attachment "B" when the utility **accumulates costs under a work order** accounting procedure prescribed by a Federal or State regulatory body; and the utility proposes to **request reimbursement for actual direct and related indirect costs**.
  
- Lump Sum Method of Accounting**

The "Lump Sum Method of Accounting" should be designated on Attachment "B" when the utility proposes to request reimbursement **based on an agreed lump sum amount supported by a detailed cost analysis**.
  
- Alternative Method of Accounting**

The "Alternative Method of Accounting" should be designated on Attachment "B" when the utility accumulates costs under an accounting procedure developed by the utility and approved by the State; and, the utility proposes to request reimbursement for actual direct and indirect costs; and the utility owner is a **MUNICIPALITY**.



Electric Delivery LLC

**ONCOR Project:** 3264595  
**TXDOT U-No.:** U14696  
**District:** AUSTIN  
**County:** WILLIAMSON  
**Federal Proj. No.:** N/A  
**ROW CSJ No.:** 0683-01-092  
**Const CSJ:** N/A  
**Highway No.:** RM 620  
**From:** DEEPWOOD DRIVE  
**To:** IH-35

**Attachment "C"**  
*Utility Schedule of Work and Estimated Date of Completion*

**Estimated Start Date \***                      **September 15, 2018**

**Estimated Number of Days For Completion**                      **61**

**Estimated Completion Date \*\***                      **November 15, 2018**

\* Start date is based on receipt of signed TXDOT contract.

\*\* Completion date is for construction phase only. This period does not include time allotment to capture trailing charges needed for project invoicing. Removal of existing poles in the new road ROW is contingent on all foreign pole contracts being removed in an expeditious manner.

**Note:** In the event that it becomes necessary, and/or at TXDOTs request, Oncor will ask if crews will work 7 days per week (their volitional option and does not including holidays) in order to facilitate getting the project done as quickly as possible. This will increase the labor costs. OED will work with TXDOT in the event that a Supplemental Agreement is necessary if the costs exceed 25% rule stated in Utility Manual.



**Electric Delivery LLC**

**ONCOR Project:** 3264595  
**TXDOT U-No.:** U14696  
**District:** AUSTIN  
**County:** WILLIAMSON  
**Federal Proj. No.:** N/A  
**ROW CSJ No.:** 0683-01-092  
**Const CSJ** N/A  
**Highway No.:** RM 620  
**From:** DEEPWOOD DRIVE  
**To:** IH-35

**Attachment "D"**

*Statement Covering Contract Work*

(TXDOT Utility Manual: Chapter 7, Section 3, Page 9)

*(Attach TXDOT Right-of-Way Form - ROW-U-48 Here)*



STATEMENT COVERING UTILITY CONSTRUCTION CONTRACT WORK  
(AS APPEARING IN ESTIMATE)

U-Number: U14696

ROW CSJ Number: 0683-01-092

District: Austin

County: Williamson

Highway No.: RM 620

Federal Project No.: N/A

I, Keith Hull, a duly authorized and qualified representative of Oncor Electric Delivery, hereinafter referred to as **Owner**, am fully cognizant of the facts and make the following statements in respect to work which will or may be done on a contract basis as appears in the estimate to which this statement is attached.

It is more economical and/or expedient for **Owner** to contract this adjustment, or **Owner** is not adequately staffed or equipped to perform the necessary work on this project with its own forces to the extent as indicate on the estimate.

Procedure to be Used in Contracting Work

- A. Solicitation for bids is to be accomplished through open advertising and contract is to be awarded to the lowest qualified bidder who submits a proposal in conformity with the requirements and specifications for the work to be performed.
- B. Solicitation for bids is to be accomplished by circulating to a list of pre-qualified contractors or known qualified contractors and such contract is to be awarded to the lowest qualified bidder who submits a proposal in conformity with the requirements and specifications for the work to be performed. Such presently known contractors are listed below:
  - 1.
  - 2.
  - 3.
  - 4.
  - 5.
- C. The work is to be performed under an existing continuing contract under which certain work is regularly performed for **Owner** and under which the lowest available costs are developed. (If only part of the contract work is to be done under an existing contract, give detailed information by attachment hereto.)
- D. The utility proposes to contract outside the foregoing requirements and therefore evidence in support of its proposal is attached to the estimate in order to obtain the concurrence of the State, and the Federal Highway Administration Division Engineer where applicable, prior to taking action thereon (approval of the agreement shall be considered as approval of such proposal).
- E. The utility plans and specifications, with the consent of the State, will be included in the construction contract awarded by the State. In the best interest of both the **State** and the **Utility**, the **Utility** requests the **State** to include the plans and specifications for this work in the general contract for construction of Highway \_\_\_\_\_ in this area, so that the work can be coordinated with the other construction operations; and the construction contract is to be awarded by the **State** to the lowest qualified bidder who submits a proposal in conformity with the requirements and specifications for the work to be performed.

Signature Keith Hull

Date 8-23-2011

Title Vice President of Distribution Operations



ONCOR Project: 3264585  
 TXDOT U-No.: U14896  
 District: AUSTIN  
 County: WILLIAMSON  
 Federal Proj. No.: N/A  
 ROW CSJ No.: 0683-01-092  
 Const CSJ: N/A  
 Highway No.: RM 620  
 From: DEEPWOOD DRIVE  
 To: H-35

**Attachment "E"**  
*Utility Joint Use Acknowledgment*

*The appropriate use and occupancy form to be used is determined by whether or not a property interest exists by the utility (after relocation is complete). If a property interest will exist (after relocation is complete), use Form ROW-U-JUAA, Joint Use Agreement. If no property interest will exist, use a Utility Installation Request (which is for reimbursable AND non-reimbursable projects). The UIR is submitted electronically to TXDOT.*

Note\* A reimbursable package cannot be submitted to TXDOT without the UIR approval form included.

**Utility Installation Request - Electroncially Submitted**

*If a utility relocates off its existing property interest (private easement, public utility easement (PUE) or restrictive rights) within TxDOT right of way, Form MNT 1082, Utility Installation Request should be executed for the new facility*

- Notice of Proposed Installation - Utility Line on TxDOT Highway Right-of-Way submitted electronically  
**ONCOR Personnel** to Reference WR Number, U-Number, and the word REIMBURSABLE in the Description Field
- Approval Form of the UIR with TXDOT's Approval - For Oncor U-40 Signature Authority's Review

**Utility Joint Use Acknowledgment**

(Attach TXDOT Right-of-Way Form - ROW-U-JUA Here)

*If the old or existing easement is not relinquished by quitclaim or acquisition, Form ROW-U-JUAA should be executed to document the existence of the easement on TxDOT right of way*



# Utility Installation Request

PERMIT NUMBER <u>pending</u>		
GLOBAL POSITIONING SYSTEM COORDINATES (GPS) NORTH AMERICAN DATUM 1983, (1993 ADJUSTMENT) IN DECIMAL DEGREES(DD)		
	LATITUDE (DD)	LONGITUDE (DD)
BEGIN	30.512713	-97.702117
END	30.509903	-97.687365

To the Texas Transportation Commission  
c/o District Engineer Texas Department of Transportation  
Austin, Texas

Date 8/10/2018

Formal notice is hereby given that Oncor Electric Delivery Company LLC

proposes to place a relocation of OH facilities.

line within the right of way of \_\_\_\_\_, RM \_\_\_\_\_, Displ. \_\_\_\_\_, to RM \_\_\_\_\_ Displ. \_\_\_\_\_ in  
Williamson County Texas, MNT Sec. No. 054805 as follows: (give location, length, general design, etc.)

Use additional sheet as needed)

Oncor is relocating electric distribution facilities starting at station 458+32 thru 506+26 consisting of installing 6 concrete poles and 48 wood poles, 6130 ft of conductor. It is proposed to remove 28 poles and 4848 ft of conductor. This is required due to a TXDOT road widening project on FM 620 starting at Deepwood Drive and ending at IH-35 in Round Rock.

We will construct and maintain the line on the highway right of way as shown on the attached drawing and in accordance with the rules, regulations and policies of the Texas Department of Transportation (TxDOT), and all governing laws, including, but not limited to, the "Texas Engineering Practice Act," "Federal Clean Water Act," the "National Endangered Species Act," "Americans with Disabilities Act," and the "Federal Historic Preservation Act." Upon request by TxDOT at any time, we will submit to TxDOT proof of compliance with all governing laws, rules and regulations before commencement of construction. Plans shall include the design, proposed location, vertical elevations, and horizontal alignments of the facility based on the department's survey datum, the relationship to existing highway facilities and the right of way line, traffic safety and access procedures, and location of existing utilities that may be affected by the proposed utility facility. The location and description of the proposed line and appurtenances is more fully shown by a complete set of drawings attached to this Utility Installation Request (Request). We will give plans to TxDOT for each future proposed modification or expansion to our facility and TxDOT will have 30 days to review and approve the plans prior to commencement of the work. A new Request may be required as a condition of approval.

Our organization will use Best Management Practices to minimize erosion and sedimentation resulting from the proposed installation, and we will revegetate the project area as indicated under "Revegetation Special Provisions." We will also ensure that traffic control measures complying with applicable portions of the *Texas Manual of Uniform Traffic Control Devices* will be installed and maintained for the duration of this installation.

When installing, modifying or maintaining our utility on controlled access facilities, we shall conform to the Texas Transportation Code, Title 6 Roadways, Chapter 203, Subchapter C, Control of Access, §203.031 (<http://www.statutes.legis.state.tx.us/>). We shall limit access for servicing this installation to access via (a) frontage roads where provided, (b) nearby or adjacent public roads or streets, (c) trails along or near the highway right of way lines, connecting only to an intersecting road; from any one or all of which entry may be made to the outer portion of the highway right of way for normal service and maintenance operations. Our rights of access to the through traffic roadways and ramps shall be subject to the same rules and regulations that apply to the general public.

It is expressly understood that TxDOT does not purport hereby to grant any right, claim, title or easement in or upon highway right of way. TxDOT may require us to relocate this line, subject to the provisions of governing laws, by giving us at least 30 days written notice. We understand a new Request will be required for the relocation. We will notify TxDOT prior to commencement of any operation which requires pruning of trees so that TxDOT may provide specifications to govern performance of work, including trimming, topping, tree balance, type of cuts, painting cuts and clean up. We understand that these specifications are intended to preserve TxDOT's considerable investment in highway beautification plantings and by reducing damage due to trimming and to protect known endangered species.

Our installation shall not damage any part of the roadway structure or associated appurtenances. We will make adequate provisions to cause minimum inconveniences to the traveling public and adjacent property owners. We will not open-cut driveways or intersecting roadways without specific written permission from the owner.

Following approval, we will begin construction on or after \_\_\_\_\_

09/15/2018

Month/Day/Year

We understand TxDOT may place additional provisions and requirements as listed below, based upon, but not limited to, the type of utility being installed, local site conditions, soil types and traffic.

<b>Additional Provisions and Requirements (for TxDOT input only)</b>
<p><b>• General Special Provisions:</b></p> <p><input type="checkbox"/> Are attached.</p> <p><input type="checkbox"/> Are not attached.</p>
<p><b>• As-built Plans/Certifications of Construction:</b></p> <p><input type="checkbox"/> Are required and shall be certified as accurate by an authorized representative of the company.</p> <p><input type="checkbox"/> Are required and shall be signed and sealed by a State of Texas Licensed Professional Engineer.</p> <p><input type="checkbox"/> Are not required</p> <p><input type="checkbox"/> Certification that utility was installed as approved</p>
<p><b>• Re-vegetation Special Provisions:</b> In order to minimize erosion and sedimentation resulting from the proposed installation, the project area will be re-vegetated:</p> <p><input type="checkbox"/> in accordance with TxDOT's Standard Specification Item 164 which specifies the appropriate grass seed mix to be used, or:</p> <p><input type="checkbox"/> as indicated on the attachment.</p>
<p>TxDOT Representative to be notified 48 hours prior to beginning construction:</p>

If approved, we understand we will assume all risks associated with this installation within the TxDOT right of way. These risks include injuries to our workers, damage to contiguous utility lines that may be in the area and injuries or damage resulting from our failure to properly install and maintain the line.

If the character, use or function of our installation is materially changed from that approved under this Request, we will notify TxDOT within 30 days after the change. In the event of a voluntary or involuntary loss of public utility status, or other legal authority for longitudinal placement of the utility facility in the highway, or there is an abandonment of the facility without the approval of TxDOT, we will at our expense remove the unauthorized portion of the facility from the right of way.

If installation of the line is not begun prior to the 91st calendar day from date of issuance, we acknowledge that, unless otherwise extended, TxDOT's approval of this Request will automatically **expire**, and we will be required to resubmit our Request. All Request submissions, whether due to expiration of approval under this paragraph or new Requests for modifications and relocations shall be in accordance with the governing laws, rules, regulations and policies existing at the time of submission. In the event we fail to comply with any or all of the requirements as set forth in this Request, the State may take such action as it deems appropriate to compel our compliance.

By signing as/for the requestor below, I certify that I am authorized to represent the requestor, that I agree to the provisions and requirements included in this Utility Installation Request, and our commencement of construction will further attest to our review and acceptance of said additional provisions and requirements.



<b>REQUESTOR</b>		
<b>Date:</b> 8/10/18		
<b>By:</b> Rosaura Barragan		
<b>Signature:</b>		
<b>Title:</b> Major Designer Seniot		
<b>Address:</b> 3620 Franklin Ave		
Waco	Tx	76710
<b>City</b>	<b>State</b>	<b>Zip Code</b>
( 254 )	750 5351	
<b>Area Code</b>	<b>Telephone Number</b>	

<b>APPROVED BY TxDOT</b>		
<b>Date:</b>		
<b>By:</b>		
<b>Signature:</b>		
<b>Title:</b>		
<b>Address:</b>		
<b>City</b>	<b>State</b>	<b>Zip Code</b>
( )	( )	
<b>Area Code</b>	<b>Telephone Number</b>	



Electric Delivery Co., LLC

ONCOR Project: 3264595  
 TXDOT U-No.: U14696  
 District: AUSTIN  
 County: WILLIAMSON  
 Federal Proj. No.: N/A  
 ROW CSJ No.: 0683-01-092  
 Const CSJ: N/A  
 Highway No.: RM 620  
 From: DEEPWOOD DRIVE  
 To: IH-35

**Attachment "F"**  
*Eligibility Ratio*

**Federal Utility Procedure (FUP)** All utility adjustments are eligible for reimbursement by State law for **Interstate** projects. The necessity for, and justification of, **Interstate** adjustments depends on whether the existing facilities need to be adjusted to accommodate the highway and are in the best interests of the public.

**X State Utility Procedure (SUP)** Utility adjustments on Federal-aid (non-interstate), Off-System, State, and FM highway projects **require a determination of eligibility**. The justification for cost participation depends on whether the existing facilities have real or compensable property rights, in addition to the need to be adjusted to accommodate the highway and are in the best interests of the public. In situations where eligibility is less than 100%, TXDOT ROW Division approval of the eligibility ratio will be required.

(TXDOT Utility Manual: Chapter 8, Section 2)

(Attach Eligibility Ratio Calculation Support Documents Here)

(If the necessity arises to prove the utility's property interest, attach the appropriate affidavits or TXDOT form "ROW-U-84" here)



Electric Delivery LLC

**ONCOR Project:** 3264595  
**TXDOT U-Number:** U14696  
**District:** AUSTIN  
**Description:** WILLIAMSON  
**County:** N/A  
**ROW CSJ No.** 0683-01-092  
**Const CSJ:** N/A  
**Highway:** RM 620  
**From:** DEEPWOOD DRIVE  
**To:** IH-35

## Attachment "F"

*Eligibility Ratio Calculation Formula*

Poles on Private (divided by)	12 (divided by)	(=)	0.4286000
Total Poles to be Removed	28		
	42.86%		

(TXDOT Utility Manual: Chapter 8, Section 2)

(Attach Eligibility Ratio Calculation Support Documents Here)

(If the necessity arises to prove the utility's property interest, attach the appropriate affidavits or TXDOT form "ROW-U-84" here)



Electric Delivery

ONCOR Project: 3264595  
 TXDOT U-No.: U14696  
 District: AUSTIN  
 County: WILLIAMSON  
 Federal Proj. No.: N/A  
 ROW CSJ No.: 0683-01-092  
 Const CSJ: N/A  
 Highway No.: RM 620  
 From: DEEPWOOD DRIVE  
 To: IH-35

**Attachment "G"**  
*Betterment Calculation and Estimates*

**Forced Betterments**

Forced betterments, also known as non-elective betterments, are those necessitated by transportation project construction. TXDOT cost participation is based on the cost of providing the most economical replacement facility or restoration of functionally equivalent service to the facility being replaced. This type is usually a **REIMBURSABLE** cost item. These items must be properly documented by the utility and include:

- 1) non-stocked items that are uneconomical to purchase;
- 2) items to comply with governmental laws and ordinances;
- 3) appropriate regulatory commission codes;
- 4) published, current design practices regularly followed by the utility in its own work;
- 5) installment of replacements of equivalent standard, although not identical;
- 6) betterments for which there are direct benefits to, and/or are required for, the transportation project.

**Elective Betterments**

The costs of elective betterment items are **ineligible** for TXDOT and Federal participation. Such elective betterments should be depicted on the plan as part of the work proposed.

**No Betterments**

There is no betterment involved in this utility adjustment.

Forced betterment is use of concrete pole due to unable to obtain easements for necessary guying on private property and unable to place guying more than 3 Ft. into ROW.



**Electric Delivery LLC**

**ONCOR Project:** 3264595  
**TXDOT U-No.:** U14696  
**District:** AUSTIN  
**County:** WILLIAMSON  
**Federal Proj. No.:** N/A  
**ROW CSJ No.:** 0683-01-092  
**Const CSJ:** N/A  
**Highway No.:** RM 620  
**From:** DEEPWOOD DRIVE  
**To:** IH-35

**Attachment "H"**  
*Proof of Property Interest - Non Interstate Highways*

**X** See Attached Easements / Affidavits

*(Attach TXDOT Appropriate Right-of-Way Form - Here)*

**(ROW-U-1A) - Utility Owner**

**(ROW-U-1B) - Disinterested Party**

**(ROW-U-1C) - Individual Property Owner**

**(TXDOT Utility Manual: Chapter 3, Section 4)**

**TXDOT Policy** – TXDOT has acknowledged, through its actions and policies, situations where a compensable

**2nd**  
**bullet point:**

Texas Caselaw - May establish additional reimbursement rights including granting prescriptive easements.

**5th**  
**bullet point:**

Utility Company - a utility company may have a compensable interest in its existing facility although a record easement does not exist, i.e., a prescriptive claim.



**AFFIDAVIT**  
 (for Utility Owner)

U-No.: U14696

**THE STATE OF TEXAS**

§  
§  
§

District: Austin  
 County: Williamson  
 Federal Project No.:  
 ROW CSJ No.: 0683-01-092  
 Highway No.: RM 620  
 (To be filled in by State)

**COUNTY OF HILL**

**BEFORE ME, THE UNDERSIGNED AUTHORITY**, on this day personally appeared Keith Hull of the Oncor Electric Delivery Company, LLC, ("Utility") who after being by me duly sworn upon his/her oath deposes and says as follows:

"I, Keith Hull am over the age of 18 years and am fully competent to testify to the matters set forth in this Affidavit. I have personal knowledge of all facts and swear that such facts are true and correct.

1. See attached easements which are recorded in public records of Williamson County and listed below;

Cabinet: L, Slide 326 Signed February 2<sup>nd</sup>, 1995  
 Vol.1126, Page 312 Signed May 14<sup>th</sup>, 1974  
 Cabinet: F, Slide 290 Signed October 31<sup>st</sup>, 1984  
 Vol. 498, Page 560 Signed April 7<sup>th</sup>, 1967  
 Cabinet: A, Slide 351 Signed August 14<sup>th</sup>, 1962  
 Cabinet: E, Slide 203 Signed January 3<sup>rd</sup>, 1983  
 Vol. 446, Page 26 Signed June 7<sup>th</sup>, 1961  
 Vol. 1299, Page 478 Signed January 8<sup>th</sup>, 1986  
 Vol. 544, Page 172 Signed October 26<sup>th</sup>, 1971

2. Utility's holding of easements since 1961 constitutes familiarity.
3. Utility is not claiming property ownership;
4. Utility easements permit construction, maintenance, reconstruction, repair, inspection and operation of a distribution power line;
5. Under the terms of the attached easements, the utility does not fence or enclose the easement areas;
6. Utility does not claim title nor possession of these easements by prescription;

Further affiant sayeth not."

  
 Signature

Keith Hull  
 Vice President of Distribution Operations

Oncor Electric Delivery Company, LLC  
 Company



---

---

Corporate Acknowledgment

State of Texas  
County of

This instrument was acknowledged before me on \_\_\_\_\_ by Keith Hull, Vice President of  
Distribution Operations of Oncor Electric Delivery Company, LLC, a Delaware corporation, on behalf of said  
corporation.

  
Notary Public's Signature



Said Company shall have the right to erect 5 poles, 0 stubs, and 3 guy anchorages along the course of said line, together with the right of ingress and egress for the purpose of constructing, improving, inspecting, maintaining, operating and removing said line and appurtenances; the right to relocate said line in the same relative position to any adjacent road if and when said road is widened in the future; the right to install additional electric circuits along said line, and the right at all times to cut away and keep clear of said line and appurtenances, all trees and other obstructions which, in the sole judgment of said Company, may endanger or interfere with the proper maintenance and operation of said line.

TO HAVE AND TO HOLD the above described easement and rights unto the said Company, its successors and assigns, until said line shall be abandoned.

EXECUTED this 27th day of April, A. D. 1961.

Witnessed by:

\_\_\_\_\_  
\_\_\_\_\_

V. C. Johnson  
Ann H. Johnson

CERTIFICATE OF ACKNOWLEDGMENT FOR INDIVIDUALS

THE STATE OF TEXAS

County of Williamson

BEFORE ME, the undersigned authority, on this day personally appeared

V. C. Johnson

known to me to be the person (s) whose name (s) is (are) subscribed to the foregoing instrument, and acknowledged to me that he executed the same for the purposes and consideration therein expressed.

GIVEN UNDER MY HAND AND SEAL OF OFFICE this 7th day of June, A. D. 1961.

E. P. Olson  
Notary Public, Williamson County, Texas

CERTIFICATE OF ACKNOWLEDGMENT FOR MARRIED WOMAN

THE STATE OF TEXAS

County of Williamson

BEFORE ME, the undersigned authority, on this day personally appeared

Ann H. Johnson

wife of V. C. Johnson

known to me to be the person whose name is subscribed to the foregoing instrument, and having been examined by me privily and apart from her husband, and having the same fully explained to her, she, the said Ann H. Johnson, acknowledged such instrument to be her act and deed, and declared that she had willingly signed the same for the purposes and consideration therein expressed and that she did not wish to retract it.

GIVEN UNDER MY HAND AND SEAL OF OFFICE this 7th day of June, A. D. 1961.

E. P. Olson  
Notary Public, Williamson County, Texas.

Filed for Record on the 28 day of July  
July

A. D. 1961, at 2 o'clock PM

A. D. 1961, at 9:05 o'clock AM

WILLIAMSON County, Texas

Notary Public, Texas

Vertrude Balcer

Form 11-10-59

THE STATE OF TEXAS

County of Williamson

That Russell Koontz

of Travis County, Texas, hereinafter called "Grantor", whether one or more, in consideration of the advantages which will accrue to Grantor from the construction of the electric power line hereinafter described, hereby grants to TEXAS POWER & LIGHT COMPANY, of Dallas, Texas, an easement and right of way for an electric power line consisting of a variable number of wires and one or more

Taylor District  
W.A. 29-2009, Proj. 266

3708

KNOW ALL MEN BY THESE PRESENTS:

electric circuits, and all necessary or desirable appurtenances, and for a communication line and appurtenances, upon, over and across Grantor's land in the J. M. Harrell

Survey, Abstract No. 284, Williamson County, Texas.

The center line of said power line shall be located across said land as follows:

Beginning at a point in a property line dividing the property of Russell Koontz and the north boundary of Ranch Road #620, said point being located a distance of 73 feet, more or less, west of said Russell Koontz' southeast property corner. Dwg. SF166630, Sheet 5.

Thence in a northwesterly direction a distance of 2 feet, more or less, to an angle pole and its attached guy, said guy to extend in a northeasterly direction a distance of 28 feet, more or less, for guy anchorage.

Beginning again at aforementioned angle pole located at Survey Sta 1428.

Thence in a westerly direction a distance of 106 feet, more or less, to a deadend pole and its attached guy, said guy to extend in the same westerly direction a distance of 2 feet, more or less, for guy anchorage.

The above described property constitutes no part of my homestead.

This description is based on a preliminary survey, and it is understood that said Company may relocate said line in the same general direction before or at any time after construction, and may relocate any of its structures along the course of said line.

Said Company shall have the right to erect 2 poles, 0 stubs, and 2 guy anchorages along the course of said line, together with the right of ingress and egress for the purpose of constructing, improving, inspecting, maintaining, operating and removing said line and appurtenances; the right to relocate said line in the same relative position to any adjacent road if and when said road is widened in the future; the right to install additional electric circuits along said line; and the right at all times to cut away and keep clear of said line and appurtenances all trees and other obstructions which, in the sole judgment of said Company, may endanger or interfere with the proper maintenance and operation of said line.

TO HAVE AND TO HOLD the above described easement and rights unto the said Company, its successors and assigns, until said line shall be abandoned.

EXECUTED this 1th day of May, A. D. 19 61.

Witnessed by:

Russell Koontz

CERTIFICATE OF ACKNOWLEDGMENT FOR INDIVIDUALS

THE STATE OF TEXAS

County of Williamson

BEFORE ME, the undersigned authority, on this day personally appeared Russell Koontz

known to me to be the person(s) whose name(s) is (are) subscribed to the foregoing instrument, and acknowledged to me that he executed the same for the purposes and consideration therein expressed.

GIVEN UNDER MY HAND AND SEAL OF OFFICE this 8 day of May, A. D. 19 61

Notary Public N. K. Burke Williamson County, Texas  
N. K. BURKE  
NOTARY PUBLIC  
IN AND FOR TRAVIS COUNTY, TEXAS

Filed for Record on the 28 day of July  
July Recorded on the 28 day of July

A. D. 1961, at 8 o'clock A.M.  
A. D. 1961, at 10 o'clock A.M.

DICK CHEVENKA, County Clerk

St. Gertrude Bohar Deputy

**WILLIAMSON COUNTY CLERK**  
**OFFICIAL PUBLIC RECORDS**

DOCUMENT NUMBER 8501068

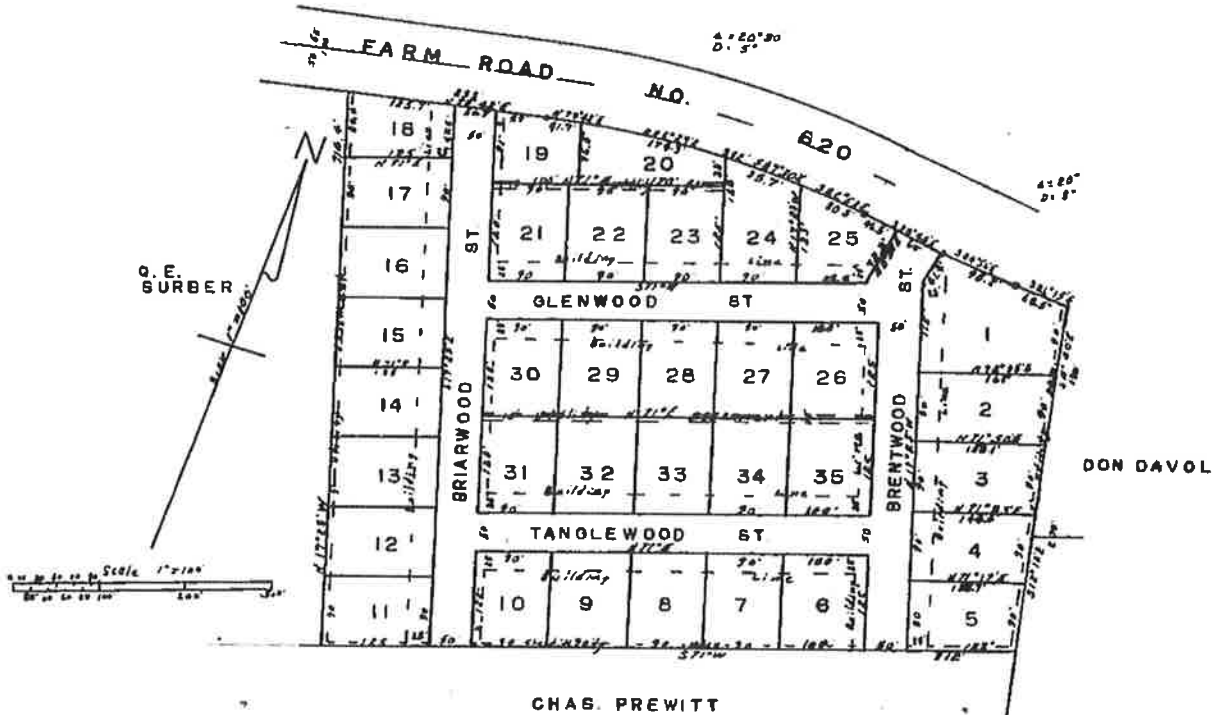
WAS ASSIGNED TO A SUBDIVISION AND

CAN BE FOUND IN THE PLAT RECORDS

IN CABINET F SLIDE(S) 290



LITTLE OAK ADDITION  
 TO ROUND ROCK, TEXAS  
 11.82 AC. J.M. HARRELL SURVEY, ABST. 284



BEFORE ME, the undersigned authority, on this day personally appeared Bennie T. Rustin and Jean Rustin, known to me to be the persons whose names are subscribed to the above instrument, and have acknowledged to me that they executed the same for the purposes and considerations therein expressed. I, the undersigned authority, do hereby certify that this instrument is the true and correct copy as the same appears in the original record.

1/3 Bennie T. Rustin      1/3 Jean Rustin

BEFORE ME, the undersigned authority, on this day personally appeared Don Davol, known to me to be the person whose name is subscribed to the above instrument, and have acknowledged to me that he executed the same for the purposes and considerations therein expressed. I, the undersigned authority, do hereby certify that this instrument is the true and correct copy as the same appears in the original record.

1/3 Don Davol

BEFORE ME, the undersigned authority, on this day personally appeared Chas. Prewitt, known to me to be the person whose name is subscribed to the above instrument, and have acknowledged to me that he executed the same for the purposes and considerations therein expressed. I, the undersigned authority, do hereby certify that this instrument is the true and correct copy as the same appears in the original record.

Chas. Prewitt



Volume 11, Page 550

*Calvert A. Clark 351*

THE STATE OF TEXAS, )  
COUNTY OF WILLIAMSON )  
KNOW ALL MEN BY THESE PRESENTS:

That I, W. P. FOREST, a registered Public Surveyor, do hereby CERTIFY that I did lay out on the ground Little Oak Addition to Round Rock, Texas, and did prepare the plat of said addition, and that the said plat is a true and correct representation of said addition as surveyed on the ground, and that said addition is comprised of that certain tract described in a deed from Gertrude P. Gantert, et al. to Bernice T. Bustin, et ux., said deed being of record in Volume 445, Page 45, Deed Records of Williamson County, Texas.

In WITNESS Whereof I have hereunto set my hand and Seal this the 14 day of August, 1962.

/s/ W. P. FOREST  
REGISTERED PUBLIC SURVEYOR NO. 101,  
WILLIAMSON COUNTY, TEXAS.

(Seal)

THE STATE OF TEXAS )  
COUNTY OF WILLIAMSON )  
KNOW ALL MEN BY THESE PRESENTS:

That we, Bernice T. Bustin and wife, Jean Bustin, of the County of Williamson, State of Texas, being the owners of a tract of land described in the foregoing certificate of W. P. Forest, Registered Public Surveyor, and a map and plat thereof accompanying the same, do hereby adopt said map and plat thereof in the name of LITTLE OAK ADDITION to ROUND ROCK, TEXAS, and we do hereby designate to public use forever any streets shown thereon for the use of the public in ingress and egress from said addition.

We hereby grant to the City of Round Rock, Texas, and to the telephone, gas, water, light and power companies, and all other public utility companies, the easements required over the rear five feet of each lot, for the erection, maintenance and repairs of street, sewer, gas, water, light, power and telephone lines thereon, including the right of ingress and egress, over such portions of the remainder of said addition, for the purpose of erecting, maintaining and repairing said utility facilities.

In connection with the adoption of this map, plat and subdivision of said premises we have made and imposed, and by these presents do make and impose thereon the following restrictions, covenants, conditions and limitations, which shall be covenants running with the land, to-wit:

- (1) That no lot, or any part thereof, shall ever be used as a site for a filling station, or any other business purpose, or purpose, but that said lots, and every part thereof, are restricted to use for residential purposes only.
- (2) That no building, or any part thereof, shall be erected nearer than twenty-five feet to the property line of said lots adjacent to a street on which the lot faces, or nearer than five feet to the side line of said lots.
- (3) No residence or dwelling unit shall be erected on any lot thereof which shall contain less than 1000 square feet of area, exclusive of the basement area and the area of any garage, or carport permitted attached thereto. This restriction shall not prohibit the construction of a garage, garage apartment or carport, so long as such garage, garage apartment or carport is attached to the main dwelling. No unattached building shall be erected on any lots in this subdivision.
- (4) No noxious or offensive activities shall be carried on upon any lot, or other land, in said addition, nor may any thing be done thereon which may be, or may become, an annoyance or a nuisance or a nuisance to the neighborhood.
- (5) No structures of a temporary character, trailer, basement, tent, shack, garage or other outbuildings shall be used on any lot or other land mentioned herein at any time as a residence either temporarily or permanently.
- (6) No sign of any kind shall be displayed to the public view on any lot or other land mentioned herein except that one professional sign of not more than 2 square feet, or one sign of not more than 5 square feet advertising the property for sale, or rent, or signs used by a contractor or other builder to advertise the property during the construction and sales period, may be displayed on a said land.

(7) No oil drilling, oil developments, oil refining, mineral operation, or quarry, of any kind shall be permitted on any lot mentioned herein, nor shall oil wells, tanks, tunnels, mineral excavations or shafts, shall be permitted upon or in any lot mentioned herein. No derrick or other structure used in the drilling for oil or mineral operations of any kind shall be erected, maintained or permitted on any lot, or other land mentioned herein.

(8) No animals, livestock, or poultry of any kind shall be raised, bred or kept on any lot mentioned herein except that dogs, cats and other household pets may be kept, provided that they are not kept, bred or maintained for any commercial purposes.

(9) No lot mentioned herein shall be used or maintained as a dumping ground, or for rubbish, garbage or other waste materials. Such garbage, trash, or other waste materials shall not be kept thereon except in sanitary containers. All incinerators or other equipment for the storage or disposal of such materials shall be kept in a clean and sanitary condition.

(10) The sewerage disposal system located on each lot shall be constructed so as to comply with the State Health Department minimum requirements.

(11) No fence, wall or ledge shall be permitted forward of the front building set back line on any property mentioned herein.

(12) In the interest of safety no ingress and egress from Farm Road No. 620 shall be permitted into Lots Nos. 18, 19, 24, and 25. The above numbered lots must be entered from streets within the addition.

(13) The invalidation of any of these covenants by a judgment or Court Order shall in no wise affect any of the other provisions hereof, which shall remain in full force and effect.

(14) These covenants are to run with the land and shall be binding on all parties. On or at any time subsequent to August 20, 1977, by a majority vote of the then owners of said lots and said addition, the covenants may be amended, amended or cancelled in whole, or in part; and until the covenants herein contained are so changed or amended then the same shall continue in full force and effect.

All restrictions are in all respects subject to any and all applicable zoning rate regulations lawfully in force, or hereinafter adopted.

/s/ BERNICE T. BUSTIN  
/s/ JEAN BUSTIN  
THE STATE OF TEXAS.

COUNTY OF WILLIAMSON. BEFORE ME, the undersigned authority, on this day personally appeared Bernice T. Bustin and Jean Bustin, his wife, both known to me to be the persons whose names are subscribed to the foregoing instrument, and acknowledged to me that they each executed the same for the purposes and consideration therein expressed, and acknowledged to me that they each executed the same Bernice T. Bustin, having been examined by me privately and apart from her husband, and having the same fully explained to her, she, the said Jean Bustin, acknowledged such instrument to be her act and deed, and she declared that she had willingly signed the same for the purposes and consideration therein expressed, and that she did not wish to retract it.

GIVEN UNDER MY HAND AND SEAL OF OFFICE, THIS THE 14 DAY OF AUGUST, A. D. 1962.  
/s/ DEWELE H. HARRISON  
NOTARY PUBLIC, WILLIAMSON COUNTY, TEXAS.  
(SEAL)

COUNTY OF WILLIAMSON. I, Millie Tolbrant, City Clerk of the City of Round Rock, Williamson County, Texas, do hereby CERTIFY that the foregoing map and plat designated "LITTLE OAK ADDITION to the CITY OF ROUND ROCK, WILLIAMSON COUNTY, TEXAS," was approved by the Board of Commissioners of the City of Round Rock, Texas, by Resolution passed at a meeting of the City Commissioners of the City of Round Rock, Williamson County, Texas, was approved by the Board of Commissioners of the City of Round Rock, Texas, by Resolution passed at a meeting of the Board of Commissioners of the City of Round Rock, Texas, at the City Hall in the City of Round Rock, Williamson County, Texas, on the 14th day of August, 1962.

WITNESS my Hand and Seal of Office of said City on this the 14th day of August, 1962.  
(Seal) /s/ WILLIE FORNANT  
WILLIE FORNANT, Clerk of the City  
of Round Rock, Texas.

RESOLUTION

BE IT RESOLVED BY THE CITY COUNCIL OF THE CITY OF ROUND ROCK:

1. That the plan or plat of LITTLE OAK ADDITION to the City of Round Rock, Texas, attached hereto, be and the same is hereby in all things approved, and that the same thereof are hereby authorized to file for record in the Office of the County Clerk of Williamson County, Texas, the plan, plat or map of said tract of land attached hereto, and the said County Clerk is hereby authorized to accept for filing and to record the same as the plan, plat or map of said tract of land to be known as LITTLE OAK ADDITION to the CITY OF ROUND ROCK, TEXAS.

2. The approval of such plan or plat shall not be deemed an acceptance of the proposed dedication and shall not impose any duty upon the City of Round Rock concerning the maintenance or improvement of any such dedicated parts until the proper authorities of the City shall have made actual appropriation of same by entry, use and improvement.  
ADOPTED AND APPROVED, this 14 day of August, 1962.

/s/ MARTIN ANDERSON  
MAYOR OF THE CITY OF ROUND ROCK, TEXAS  
ATTEST:/s/ WILLIE FORNANT  
SECRETARY OF THE CITY OF ROUND ROCK, TEXAS  
(CITY OF ROUND ROCK  
S E A L )

FIXED NOTES OF a tract of land of 11.82 acres of the J. M. Harrell Survey,  
Abct. #284;

- BEGINNING at the N. E. corner of the 11.82 acres, which stands South 4290' feet from the N. E. Corner of the Harrell Survey;
- THENCE S 11 deg. 20 min E. 180 feet, and S. 12 deg. 10 min E. 270 feet to the S. E. corner of the 11.82 acres;
- THENCE S 71 deg. W. with an old fence, 812 feet to the S. W. corner of the 11.82 acres;
- THENCE N 17 deg. 23 min W. with an old fence, 714.4 feet to the N. W. corner of the 11.82 acres;
- THENCE with the South ROW line of Farm Road #680, as follows:
  - N 78 deg. 42 min E. 235 feet; N 79 deg. 48 min E. 41.7 feet;
  - N 85 deg. 27 min E. 174.3 feet; S 07 deg. 30 min E. 95.7 feet;
  - S 62 deg. 53 min E. 80.3 feet; S 60 deg. 40 min E. 106.5 feet;
  - S 84 deg. 56 min E. 95.2 feet; S 86 deg. 13 min E. 66.5 feet to the POINT OF BEGINNING.

STATE OF TEXAS, )  
COUNTY OF WILLIAMSON ) KNOW ALL MEN BY THESE PRESENTS:  
That I, W. P. Forrest, a Registered Public Surveyor of the State of Texas, do hereby CERTIFY that I did survey upon the ground the above described tract of land and the description of same is true and correct to the best of my knowledge and belief.

TO CERTIFY WHICH Witness my Hand and Seal of Office at Georgetown, Williamson County, Texas, this the 3rd day of August, A. D. 1962.  
/s/ W. P. FORREST  
W. P. FORREST, Surveyor No. 101.  
DICK CERVINO, Clerk, County Court,  
Williamson County, Texas.



1126 PAGE 312  
THE STATE OF TEXAS

1974

COUNTY OF WILLIAMSON

KNOW ALL MEN BY THESE PRESENTS

That MICHAEL E. BENNETT

of Williamson County, Texas, hereinafter called "Grantor," whether one or more, in consideration of the advantages which will accrue to Grantor from the construction of the electric distribution line and telephone line hereinafter described, hereby grants to TEXAS POWER & LIGHT COMPANY, of Dallas, Texas, and the Southwestern Bell Telephone Company, an easement and right of way for an electric distribution line, and all necessary or desirable appurtenances, and for a telephone line and appurtenances, upon over and across Grantor's land in the J. M. Harrell Survey, Abstract No. 284, Williamson County, Texas, more particularly described in deed from Charles B. Estes to Michael E. Bennett dated May 14, 19 74, recorded in Volume 584, Page 665 Deed Records of said County.

The center line of said distribution line and telephone line shall be located across said land as follows

Beginning at a point in Grantor's East property line. Said point being located North 00 degrees 02 minutes 59 seconds East 29 feet from Grantor's Southeast property corner. Said corner being a point in the North Right-of-Way line of Ranch Road 620. Said corner also being located South 89 degrees 57 minutes 10 seconds West 120.15 feet from point of tangent number 480 + 80.86 in said Right-of-Way.

THENCE South 89 degrees 57 minutes 10 seconds West 1 foot to an existing Texas Power & Light Company distribution pole (2830-317-7028), with a proposed downguy extending South 00 degrees 02 minutes 59 seconds West 28 feet to an anchorage.

BEGINNING again at aforementioned pole.

THENCE North 00 degrees 02 minutes 59 seconds East 1 foot from and paralleling Grantor's East property line for a distance of 105 feet to a proposed Texas Power & Light Company distribution pole (2830-317-7039) with a proposed downguy extending North 00 degrees 02 minutes 59 seconds West 28 feet to an anchorage.

The above described property constitutes no part of my homestead

The description is based on a preliminary survey, and it is understood that Grantees may relocate said lines in the same general direction before or at any time after construction, and may relocate any of its structures along the course of said lines.

Grantees shall have the right to erect 1 poles, 0 stubs, and 2 guy anchorages along the course of said line, together with the right of ingress and egress for the purpose of construction, improving, inspecting, maintaining, operating and removing said lines and appurtenances; the right to relocate said lines in the same relative position to any adjacent road if and when said road is widened in the future, and the right at all times to cut away and keep clear of said lines and appurtenances all trees and other obstructions which, in the sole judgment of Grantees, may endanger or interfere with the proper maintenance and operation of said lines.

TO HAVE AND TO HOLD the above described easement and right unto the said Grantees, their successors and assigns, until all of said lines shall be abandoned.

EXECUTED this 21 day of July, A.D. 19 74

Michael E. Bennett  
Michael E. Bennett



CERTIFICATE OF ACKNOWLEDGMENT FOR INDIVIDUALS

THE STATE OF TEXAS

County of \_\_\_\_\_

BEFORE ME, the undersigned authority, on this day personally appeared \_\_\_\_\_

known to me to be the person(s) whose name(s) is (are) subscribed to the foregoing instrument, and acknowledged to me that executed the same for the purposes and consideration therein expressed.

GIVEN UNDER MY HAND AND SEAL OF OFFICE this \_\_\_\_\_ day of \_\_\_\_\_, A. D. 19 \_\_\_\_\_

Leone Puente

Notary Public \_\_\_\_\_ County, Texas

Easement and Right of Way

1994 THE STATE OF TEXAS FILED FOR RECORD WILLIAMSON COUNTY JAN 18 AM 8 57

FROM Michael B. Donette

TO Texas Power & Light Co. P. O. Box 660268 Dallas Texas 75266-0268 STATE OF TEXAS County: \_\_\_\_\_



JAMES S. ROBERTSON COUNTY CLERK WILLIAMSON COUNTY, TEXAS

JAN 21 1985

STATE OF TEXAS COUNTY OF WILLIAMSON I hereby certify that this instrument was FILED on the date and at the time stamped hereon by me and was duly RECORDED in the Volume and Page of the named RECORDS of Williamson County, Texas, as stamped hereon by me, on

County Clerk in and for said County hereby certify that the within Conveyance was filed in my office for record on the \_\_\_\_\_ day of \_\_\_\_\_ 19 \_\_\_\_ at \_\_\_\_\_ o'clock \_\_\_\_\_ M., and duly recorded by me in Book \_\_\_\_\_ of the Deed Records of said County, at page \_\_\_\_ Given under my hand and seal of office this \_\_\_\_\_ day of \_\_\_\_\_ 19 \_\_\_\_

County Clerk TEXAS POWER & LIGHT COMPANY REAL ESTATE DEPARTMENT P. O. BOX 660268 DALLAS, TEXAS 75266-0268

CERTIFICATE OF ACKNOWLEDGMENT FOR CORPORATIONS, ASSOCIATIONS, CHURCHES, SCHOOL DISTRICTS, ETC.

THE STATE OF TEXAS

County of \_\_\_\_\_

BEFORE ME, the undersigned authority, on this day personally appeared \_\_\_\_\_

(Title)

known to me to be the

person(s) whose name(s) is (are) subscribed to the foregoing instrument, and acknowledged to me that executed the same as the act and deed of \_\_\_\_\_

and as \_\_\_\_\_ thereof, and for the purposes and consideration therein expressed.

GIVEN UNDER MY HAND AND SEAL OF OFFICE this \_\_\_\_\_ day of \_\_\_\_\_, A. D. 19 \_\_\_\_\_

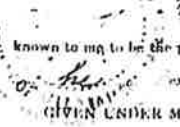
Notary Public \_\_\_\_\_ County, Texas

CERTIFICATE OF ACKNOWLEDGMENT FOR INDIVIDUALS

THE STATE OF TEXAS

County of Williamson

BEFORE ME, the undersigned authority, on this day personally appeared Leon E. Behrens



known to me to be the person(s) whose name(s) is (are) subscribed to the foregoing instrument, and acknowledged to me that he executed the same for the purposes and consideration therein expressed.

GIVEN UNDER MY HAND AND SEAL OF OFFICE this 8<sup>th</sup> day of December, A. D. 1971.

H. G. Robertson  
Notary Public Williamson County, Texas

CERTIFICATE OF ACKNOWLEDGMENT FOR INDIVIDUALS

THE STATE OF TEXAS

County of Williamson

BEFORE ME, the undersigned authority, on this day personally appeared Oliver S. Behrens



known to me to be the person(s) whose name(s) is (are) subscribed to the foregoing instrument, and acknowledged to me that he executed the same for the purposes and consideration therein expressed.

GIVEN UNDER MY HAND AND SEAL OF OFFICE this 8<sup>th</sup> day of December, A. D. 1971.

H. G. Robertson  
Notary Public Williamson County, Texas

Filed for Record on this 12 day of December,  
Duly Recorded this the 12 day of December,

A. D. 1971, at 10:42 o'clock A.M.

DICK CERVENKA, County Clerk  
Williamson County, Texas

By Kathy Davis Deputy

FORM 51-Rev 11-70

Code 390-09  
WA 1009, Proj. 630  
Map SS 16630, Sh. 5

THE STATE OF TEXAS

COUNTY OF Williamson

KNOW ALL MEN BY THESE PRESENTS

That Bennie T. Bustin

of Williamson County, Texas, hereinafter called "Grantor," whether one or more, in consideration of the advantages which will accrue to Grantor from the construction of the electric distribution line and telephone line hereinafter described, hereby grants to TEXAS POWER & LIGHT COMPANY, of Dallas, Texas, and the SOUTHWESTERN BELL TELEPHONE COMPANY, of Tex., an easement and right of way for an electric distribution line, and all necessary or desirable appurtenances, and for a telephone line and appurtenances, upon over and across Grantor's land in the Jacob M. Harrell Survey, Abstract No. 281, Williamson County, Texas.

The center line of said distribution line and telephone line shall be located across said land as follows:  
Beginning at an existing Texas Power & Light Company distribution angle pole located at Engineer's Survey Station O+80, said pole located one foot north of Grantor's south property line and one foot west of Grantor's east property line. Grantor's south property line also the north right-of-way of the present Ranch Road 620.

Thence west one foot north and parallel with Grantor's south property line, a distance of 175 feet to a proposed Texas Power & Light Company distribution deadend pole at Engineer's Survey Station 1+75 and its attached guy, said guy to extend 30 feet in the same direction to a point of anchorage.

The above described property constitutes no part of my homestead . . . . .

The description is based on a preliminary survey, and it is understood that Grantees may relocate said lines in the same general direction before or at any time after construction, and may relocate any of its structures along the course of said lines.

Grantees shall have the right to erect 2 poles, 0 stubs, and 1 guy anchorages along the course of said line, together with the right of ingress and egress for the purpose of construction, improving, inspecting, maintaining, operating and removing said lines and appurtenances; the right to relocate said lines in the same relative position to any adjacent road if and when said road is widened in the future, and the right at all times to cut away and keep clear of said lines and appurtenances all trees and other obstructions which, in the sole judgment of Grantees, may endanger or interfere with the proper maintenance and operation of said lines.

TO HAVE AND TO HOLD the above described easement and right unto the said Grantees, their successors and assigns, until all of said lines shall be abandoned.

EXECUTED this 26th day of October

A. D. 1971

*[Signature]*

CERTIFICATE OF ACKNOWLEDGMENT FOR INDIVIDUALS

THE STATE OF TEXAS

County of Williamson

BEFORE ME, the undersigned authority, on this day personally appeared Bernard Bustin

known to me to be the person whose name is subscribed to the foregoing instrument, and acknowledged to me that he executed the same for the purposes and consideration therein expressed.

GIVEN UNDER MY HAND AND SEAL OF OFFICE this 26th day of October, A. D. 1971.

*[Signature: R.M. Strasser]*  
Notary Public, Williamson County, Texas

Filed for Record on the 26th day of October, A. D. 1971, at 10 o'clock A.M.  
Duly Recorded this the 26th day of October, A. D. 1971, at 10 o'clock A.M.

DICK CERYENKA, County Clerk  
Williamson County, Texas

By Ruthy Dawn Deputy

FORM 51-Rev. 11-70

Code 390-96  
WA 3096, Proj. 442  
Map 966, Sheet 2

THE STATE OF TEXAS  
COUNTY OF Williamson

KNOW ALL MEN BY THESE PRESENTS

That John E. Knapik 5346

of Williamson County, Texas, hereinafter called "Grantor," whether one or more, in consideration of the advantages which will accrue to Grantor from the construction of the electric distribution line and telephone line hereinafter described, hereby grants to TEXAS POWER & LIGHT COMPANY, of Dallas, Texas, and the SOUTHWESTERN BELL TELEPHONE COMPANY, of Tex, an easement and right of way for an electric distribution line, and all necessary or desirable appurtenances, and for a telephone line and appurtenances, upon over and across Grantor's land in the J. H. Senzen Survey, Abstract No. 759 Williamson County, Texas

The center line of said distribution line and telephone line shall be located across said land as follows

Beginning at an existing Texas Power & Light Company distribution pole located at Engineer's Survey Station 49+06-0+00, one foot north and 1,040 feet east of Grantor's southwest property corner, Grantor's southwest property corner also the east right-of-way of a present county road, for a point of beginning.

CERTIFICATE OF ACKNOWLEDGMENT FOR MARRIED WOMAN

THE STATE OF TEXAS

County of Williamson }  
 BEFORE ME, the undersigned authority, on this day personally appeared  
Myrtle J. Pruitt wife of C. H. Pruitt, known to  
 me to be the person whose name is subscribed to the foregoing instrument, and having been examined by me privily and apart  
 from her husband, and having the same fully explained to her, she, the said Myrtle  
 acknowledged such instrument to be her act and deed, and declared that she had willingly signed the same for the purposes and  
 consideration therein expressed and that she did not wish to retract it.

GIVEN UNDER MY HAND AND SEAL OF OFFICE this 18th day of April, A. D. 1957.



Notary Public Williamson County, Texas.

Filed for Record on the 18th day of April  
 Duly Recorded this the 18th day of April

DICK CLIVENKA, County Clerk  
 Williamson County, Texas

By Katharine Deputy

Form 12-4-4

THE STATE OF TEXAS

County of Williamson

Taylor District  
 W.A. 4236  
 P.M. 620

1.

KNOW ALL MEN BY THESE PRESENTS:

That Bennie T. Bustin

1135

of Williamson County, Texas, hereinafter called "Grantor", whether one or more, in con-  
 sideration of the advantages which will accrue to Grantor from the construction of the electric power line  
 hereinafter described, hereby grants to TEXAS POWER & LIGHT COMPANY, of Dallas, Texas, an ease-  
 ment and right of way for an electric power line consisting of a variable number of wires and one or more  
 electric circuits, and all necessary or desirable appurtenances, and for a communication line and appurten-  
 ances, upon, over and across Grantor's land in the J. M. Barrell  
 Survey, Abstract No. 284, Williamson County, Texas.

The center line of said power line shall be located across said land as follows:

Beginning at a point in the west property line of Lot #19 of the Little Oaks  
 Addition to the City of Round Rock, Texas, said point being 14 feet south of  
 the northwest corner of said Lot #19.

Thence N. 51 deg. 44 min. E. 29 feet for guy anchorage.

The above described property constitutes no part of my homestead.

This description is based on a preliminary survey, and it is understood that said Company may relocate  
 said line in the same general direction before or at any time after construction, and may relocate any of its  
 structures along the course of said line.

Said Company shall have the right to erect 0 poles, 0 stubs, and 1 guy  
 anchorages along the course of said line, together with the right of ingress and egress for the purpose of con-  
 structing, improving, inspecting, maintaining, operating and removing said line and appurtenances; the right  
 to relocate said line in the same relative position to any adjacent road if and when said road is widened in the  
 future; the right to install additional electric circuits along said line; and the right at all times to cut away  
 and keep clear of said line and appurtenances all trees and other obstructions which, in the sole judgment of  
 said Company, may endanger or interfere with the proper maintenance and operation of said line.

TO HAVE AND TO HOLD the above described easement and rights unto the said Company, its success-  
 ors and assigns, until said line shall be abandoned.

EXECUTED this 7th day of April, A. D. 19 57.

Witness my hand

Bennie T. Bustin

CERTIFICATE OF ACKNOWLEDGMENT FOR INDIVIDUALS

THE STATE OF TEXAS

County of Williamson

BEFORE ME, the undersigned authority, on this day personally appeared  
Bennie T. Bustin

known to me, to be the person(s) whose name(s) is (are) subscribed to the foregoing instrument, and acknowledged to me that  
he executed the same for the purposes and consideration therein expressed.



GIVEN UNDER MY HAND AND SEAL OF OFFICE this 18<sup>th</sup> day of April, A. D. 1952.

Notary Public E. J. Brown County, Texas

Filed for Record on the 12 day of  
Duly Recorded this 12 day of

May  
May

A. D. 1952, at 8:00 o'clock P. M.

A. D. 1951, at 3:35 o'clock P. M.

DICK CERVENKA, County Clerk  
Williamson County, Texas

By Katharine [Signature] Deputy



PIONEER TITLE COMPANY

GF# 44-85-1180 LT

closer int

LEASE MODIFICATION AGREEMENT NO. TWO

2003

THE STATE OF TEXAS X  
COUNTY OF WILLIAMSON X

KNOW ALL MEN BY THESE PRESENTS:

This Agreement made and entered into this 8th day of January, 1986, by and between THE OLD SETTLERS ASSOCIATION OF WILLIAMSON COUNTY, TEXAS, herein called the "Lessor", and McDONALD'S CORPORATION, a Delaware corporation, hereinafter referred to as the "Lessee".

RECITALS

1. The parties hereto entered into a certain Ground Lease (the "Lease") on June 21, 1982, as modified by a Modification Agreement of even date therewith, for the lease of the one acre tract of land out of the Jacob M. Harrell Survey, Abstract No. 284, in Williamson County, Texas, which tract of land (the "Land") is more fully described by metes and bounds in Exhibit "A" attached hereto and incorporated herein by reference for all purposes, and in a Memorandum of Lease dated August 25, 1982 of record in Volume 899, Page 583, Deed Records of Williamson County, Texas..

2. The Lease contains a reservation of two easements (the "Easements") in favor of Lessor as described on page 2 of 3 and page 3 of 3 on Exhibit "B" of the Lease, as modified.

3. The parties hereto now desire to amend the Lease to relocate the Easements.

NOW, THEREFORE, in consideration of the premises and the mutual covenants contained herein, and for other good and valuable consideration the receipt of which is acknowledged, the parties hereto agree as follows:

A. The seven and one-half foot utility easement and the twenty-five foot access easement reserved unto the Lessor in Exhibit "A" of the Lease are hereby relocated, so as to hereafter be located on the Land as more fully described in Exhibits "I" (the 7.5 foot utility easement) and "II" (the 25 foot access easement) attached hereto and incorporated herein by reference for all purposes.

OFFICIAL RECORDS  
WILLIAMSON COUNTY TEXAS

OFFICIAL RECORDS  
WILLIAMSON COUNTY TEXAS

Unofficial Copy

B. Exhibit "A" to the Lease is modified to the extent it is inconsistent with the revised descriptions of the Easements in Exhibits "I" and "II" attached hereto.

C. Exhibit 2 and pages 2 of 3 and 3 of 3 of Exhibit 3 are hereby deleted from the Lease in their entirety.

Except as modified above, the Lease shall remain in full force and effect.

IN WITNESS WHEREOF, the parties hereunder set their hands.

LESSOR:

THE OLD SETTLERS ASSOCIATION  
OF WILLIAMSON COUNTY, TEXAS

By: V.A. Walton  
V.A. Walton  
President

LESSEE:

MCDONALD'S CORPORATION

By: W.H. Sutherland  
W.H. SUTHERLAND  
Vice President

Date of Execution:

1/14/86

Date of Execution:

January 8, 1986

THE STATE OF TEXAS X  
COUNTY OF TRAVIS X

ATTEST: Michael J. Seitz  
Assistant Secretary  
MICHAEL J. SEITZ

This instrument was acknowledged before me on this the 14th day of JANUARY, 1986 by V.A. Walton, President of The Old Settlers Association of Williamson County, Texas.

Linda C. Holloway  
Notary Public in and for the  
State of Texas  
LINDA C. HOLLOWAY  
Typed or Printed Name of Notary  
My Commission Expires: 10/9/89

Unofficial Document



1299 480

THE STATE OF Illinois X  
COUNTY OF DuPage X

This instrument was acknowledged before me on this the 8th  
day of January, 1986 by W.H. Sutherland  
Vice President\* of McDonald's Corporation.

\*and Michael J. Sise, Assistant Secretary

*Linda Jernigan*  
Notary Public in and for the  
State of Illinois

Linda Jernigan  
Typed or Printed Name of Notary

My Commission Expires: July 22, 1989

Unofficial Document

## FIELD NOTES FOR WILLIAMSON COUNTY OLD SETTLERS ASSOCIATION

BEING 1.00 ACRE OF LAND OUT OF THE JACOB M. HARRELL SURVEY, ABSTRACT NO. 284, IN WILLIAMSON COUNTY, TEXAS, AND BEING A PORTION OF A TRACT OF LAND CONVEYED BY DEED FROM MAGGIE J. HARRELL AND HUSBAND T. M. HARRELL TO ED R. ANDERSON, PRESIDENT OF THE OLD SETTLERS ASSOCIATION OF WILLIAMSON COUNTY, TEXAS, RECORDED IN VOLUME 258, PAGE 276 OF THE DEED RECORDS OF SAID COUNTY AND STATE, BEING MORE PARTICULARLY DESCRIBED AS FOLLOWS:

BEGINNING at Point "A" being a metal fence post on the Southerly Right-Of-Way line of RM 620 at Texas Highway Department Engineer's Station 513+ 36.31 marking the Northwest corner hereof, said point also being the Northeast corner of the C. R. Adolphson tract of land of record in Volume 179, Page 278 of the Deed Records of said County and State, said point being the beginning of a curve concave to the North having a radius of 1949.66 feet;

THENCE, along the Northerly boundary line hereof and said Right-Of-Way line the following three courses and distances:

- 1) 92.36 feet along the arc of said curve, through a central angle of  $02^{\circ} 42' 50''$ , said curve's long chord bears  $S 72^{\circ} 17' 30'' E$ , 92.35 feet to a Texas Highway Department Monument at PT 514+ 24.78;
- 2)  $S 73^{\circ} 19' 00'' E$ , 2.69 feet to a point;
- 3)  $S 44^{\circ} 57' 36'' E$ , at 8.55 feet pass a Texas Highway Department Monument, 261.11 feet to a Texas Highway Department Monument on the Westerly Right-Of-Way line of IH 35 marking the Northeast corner hereof;

THENCE, leaving said Northerly line and continuing along the Easterly boundary line hereof and said Right-Of-Way line  $S 18^{\circ} 15' 00'' E$ , 41.70 feet to an iron pin set marking the Southeast corner hereof;

THENCE, leaving said Easterly line and said Right-Of-Way line and continuing along the Southerly boundary line hereof  $N 83^{\circ} 51' 30'' W$ , at 264.63 feet pass Point "B" being the Southeast corner of a 25 foot wide access easement, at 369.63 feet pass a point for the Southwest corner of said easement, at 306.85 feet pass a point for the Southeast corner of a 7.50 foot wide Public Utility Easement, 313.55 feet to an iron pin set on the Easterly line of said Adolphson tract, marking the Southwest corner hereof and said Public Utility Easement;

THENCE, leaving said Southerly line and continuing along the Westerly boundary line hereof and said Easterly line  $N 06^{\circ} 08' 10'' E$ , 220.93 feet to the POINT OF BEGINNING containing 1.00 acre of land.

EXHIBIT "A"

Unofficial

7.5' Public Utility Easement

FIELD NOTES

FOR A 0.038-ACRE (1,646-SQ.FT. - 15 SQ.FT.) STRIP OF LAND 7.50 FEET IN WIDTH BEING OUT OF THE JACOB M. HARRELL SURVEY NO. 284 IN WILLIAMSON COUNTY, TEXAS, BEING ALSO OUT OF THAT TRACT OF LAND CONVEYED TO THE OLD SETTLERS ASSOCIATION OF ROUND ROCK, TEXAS, IN VOLUME 258, PAGE 276 OF THE DEED RECORDS OF WILLIAMSON COUNTY, TEXAS, SAID STRIP OF LAND BEING ALSO OUT OF A 1.00-ACRE LEASE TRACT OF RECORD IN VOLUME 899, PAGE 583 OF THE DEED RECORDS OF WILLIAMSON COUNTY, TEXAS, SAID STRIP OF LAND BEING MORE PARTICULARLY DESCRIBED BY METES AND BOUNDS AS FOLLOWS:

BEGINNING at an iron rod set in the curving southerly right-of-way line of Round Rock Avenue (Highway 620) (80-foot right-of-way), said iron rod being at the common northerly corner of said lease tract and a remainder portion of a tract of land conveyed from Dr. E.M. Burlison & wife to John F. Adolphson by instrument recorded in Volume 184, Page 350 of the Deed Records of Williamson County, Texas, said iron rod set being the most northerly corner and POINT OF BEGINNING hereof;

THENCE, with the curving right-of-way line of Round Rock Avenue (Highway 620) with a curve to the left having a radius of 1949.86 feet, a central angle of 60°13'32", an arc length of 7.68 feet and a chord which bears S71°12'19"E for a distance of 7.68 feet to a point for the most northeasterly corner hereof;

THENCE, departing said right-of-way line being 2.50 feet easterly of and parallel with the westerly boundary line of said lease tract S06°13'23"W for a distance of 218.66 feet to a point in the southerly boundary line of said lease tract for the southeasterly corner hereof;

THENCE, with the southerly boundary line of said lease tract N83°46'37"W for a distance of 7.50 feet to an iron rod found in the common boundary line between the above-mentioned Old Settlers Association tract and said Adolphson tract being also at the southwesterly corner of said lease tract for the most southwesterly corner hereof;

THENCE, with common boundary line between said lease tract and the previously-mentioned Adolphson tract N06°13'23"E for a distance of 220.33 feet to the POINT OF BEGINNING hereof and containing 0.038 acres of land.

As Surveyed By:

*Cecil Jackson* 9-5-85  
Cecil Jackson, Chisholm Date  
Registered Public Surveyor No. 4295



CJC:ek  
Sept. 5, 1985  
Job No. 100-1-054-100

EXHIBIT "A"

Unofficial

FIELD NOTES

FOR 5,305 SQUARE FEET (± 15 SQ. FT.) OF LAND (0.122 ACRE) OUT OF THE JACOB H. HARRELL SURVEY IN WILLIAMSON COUNTY, TEXAS, BEING ALSO A PORTION OF A TRACT OF LAND CONVEYED TO E.R. ANDERSON, PRESIDENT OF THE OLD SETTLERS ASSOCIATION OF WILLIAMSON COUNTY BY INSTRUMENT RECORDED IN VOLUME 258, PAGE 274 OF THE DEED RECORDS OF WILLIAMSON COUNTY, TEXAS, SAID 5,305 SQUARE FEET OF LAND BEING ALSO A PORTION OF A 1.00-ACRE LEASE TRACT OF RECORD IN VOLUME 899, PAGE 583 OF THE DEED RECORDS OF WILLIAMSON COUNTY, TEXAS, SAID 5,305 SQUARE FEET OF LAND BEING IN THE FORM OF A 25-FOOT STRIP MORE PARTICULARLY DESCRIBED BY METES AND MEASURES AS FOLLOWS:

BEGINNING for reference at an iron pin set in the curving southerly right-of-way line of Round Rock Avenue (Highway 620) being at the northerly common corner of a tract of land conveyed from Barleson to Adolphson and described as the "second tract" in Volume 184, Page 350 of the Deed Records of Williamson County, Texas, and the previously-mentioned Old Settlers' tract, said iron pin set being also the most northerly corner of said 1.00-acre lease tract, thence, with the curving southerly right-of-way line of Round Rock Avenue (80-foot right-of-way) with a curve to the left, having a radius of 1949.85 feet, a central angle of 00° 53' 28", an arc length of 30.33 feet and a chord which bears 57° 30' 33" E for a distance of 30.33 feet to a point being the most northerly corner and POINT OF BEGINNING hereof.

THENCE, continuing with the curving right-of-way line of Round Rock Avenue with curve to the left having a radius of 1949.85 feet, a central angle of 00° 44' 11", an arc distance of 25.05 feet, and a chord which bears 57° 19' 23" E for a distance of 25.06 feet to a point for the most northeasterly corner hereof;

THENCE, departing said right-of-way line S13° 38' 29" W for a distance of 50.90 feet to a point being on the westerly face of a curb island for an angle point in the easterly line hereof;

THENCE, with the westerly face of said curb island S02° 41' 58" W for a distance of 110.14 feet to a point for an angle point in the easterly boundary line hereof;

THENCE, departing the face of said curb island S11° 05' 33" W for a distance of 48.68 feet to a point being in the southerly boundary line of said 1.00-acre lease tract for the most southerly corner hereof;

THENCE, with southerly boundary line of said 1.00-acre tract N83° 46' 37" W for a distance of 25.09 feet to a point being the southwesterly corner hereof;

THENCE, departing the southerly boundary line of said 1.00-acre tract 25.00 feet westerly of and parallel with the easterly boundary line of the herein-described tract the following courses numbered 1 through 3:

1. N11° 05' 33" E for a distance of 48.97 feet to a point;
2. N02° 41' 58" E for a distance of 110.70 feet to a point;
3. S13° 38' 29" E for a distance of 55.08 feet to the POINT OF BEGINNING hereof, containing 5,305 square feet (± 15 sq. ft.).

As Surveyed By:

*Carl J. Cline* 11-14-85

Carl J. Cline  
Registered Public Surveyor No. 4295

CJC:ok  
May, 14, 1985  
Job No. 100-1-056-100



Exhibit II

OF A PORTION OF OLD SETTLER'S TRACT

RECORDED IN VOL. 268, PG. 276, DEED RECORDS, WILLIAMSON COUNTY, TEXAS

ROUND ROCK AVE. (HWY. 620)

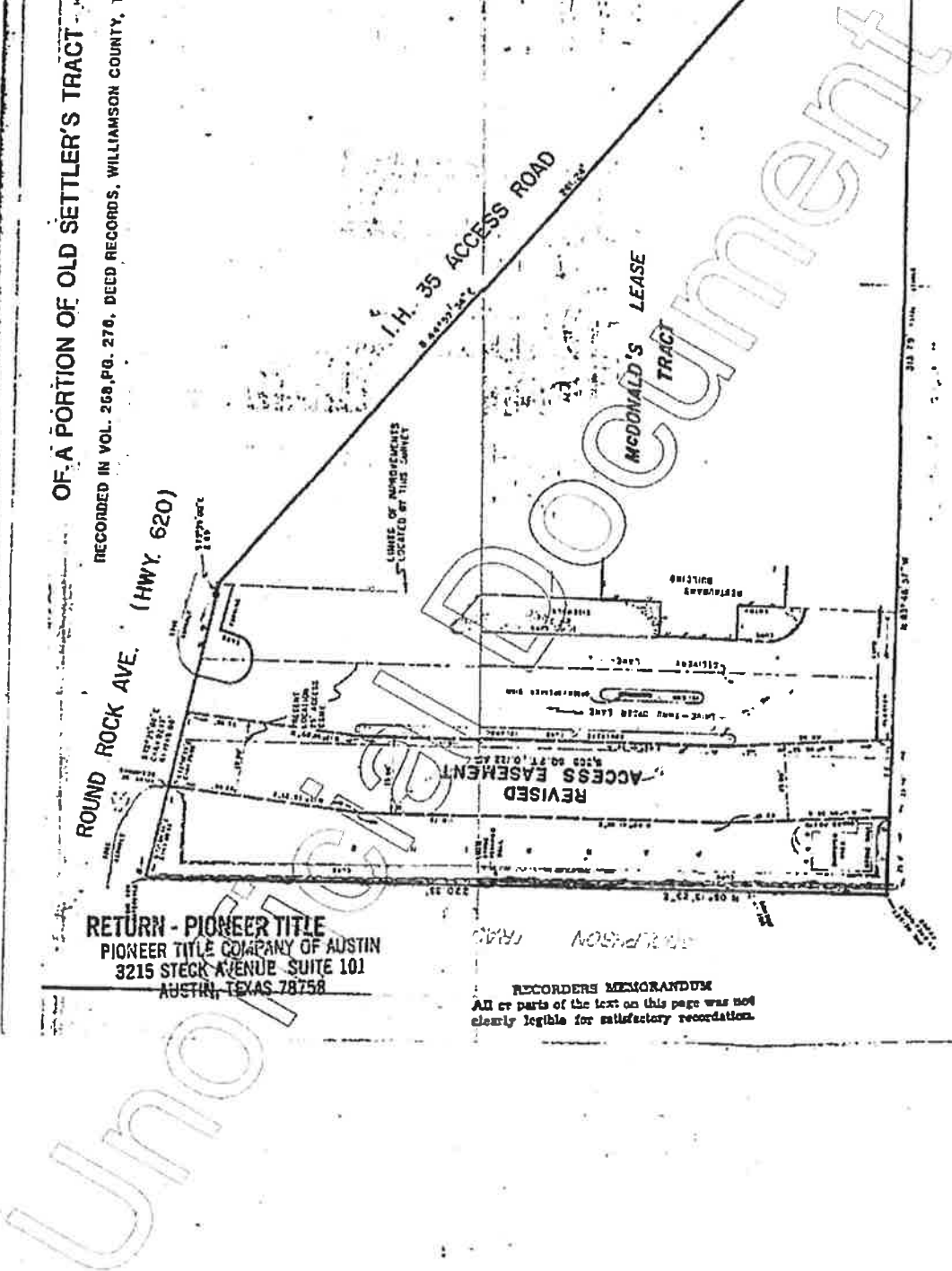
I.H. 35 ACCESS ROAD

MCDONALD'S LEASE TRACT

LOCUS OF MONUMENTS LOCATED BY THIS SURVEY

RETURN - PIONEER TITLE  
PIONEER TITLE COMPANY OF AUSTIN  
3215 STECK AVENUE SUITE 101  
AUSTIN, TEXAS 78758

RECORDERS MEMORANDUM  
All or parts of the text on this page was not clearly legible for satisfactory recordation.



1299 of 485

FILED FOR RECORD  
WILLIAMSON COUNTY, TX.

1966 JAN 15 PM 4:46

*James S. Rappleton*  
COUNTY CLERK

STATE OF TEXAS COUNTY OF WILLIAMSON  
I hereby certify that this instrument was FILED  
on the date and at the time stamped herein  
by me; and was duly RECORDED, in the Volume  
and Page of the named RECORDS of Williamson  
County, Texas, as stamped herein, by me, on

JAN 16 1966



*James S. Rappleton*  
COUNTY CLERK  
WILLIAMSON COUNTY, TEXAS

*James S. Rappleton*

2009

Unofficial Document

RECORDED  
INDEXED  
JAN 16 1966

PLAT MAP RECORDING SHEET  
DOC# 9511587

Doc# : 9511587  
Rec. \$ 56.00  
Date : 03-27-1995  
Time : 08:54:20 A.M.  
Filed & Recorded in  
Official Records  
of WILLIAMSON County, TX.  
ELABE BIZZELL  
COUNTY CLERK

INSTRUMENT # —

DEDICATOR — 620 Auto Exchange Inc.

SUBDIVISION NAME — Will Galler Subdivision

MAP RECORDED IN CABINET L-326 SLIDE 326

PROPERTY FORMERLY KNOWN AS: 5.632 acres J.M. Harrell sy., A 284 WCT 2568-891 OR

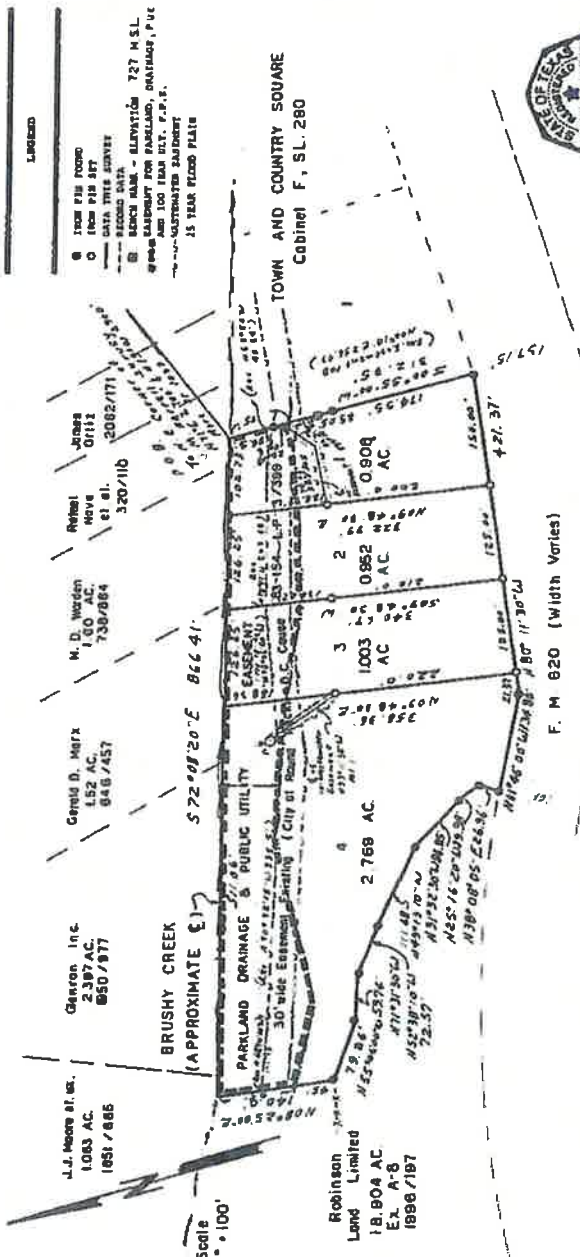
H- city of RR

INSTRUMENT DATE — 2/6/95

FILE DATE — 3/24/95

Unofficial Document

Doc # 9511587



STATE OF TEXAS  
COUNTY OF WILLIAMSON

I, William F. Bennett, Jr., Registered Professional Land Surveyor, do hereby certify that this plat from an actual and accurate non-topographic survey of the land shown hereon was prepared in accordance with the laws of the State of Texas and the rules and regulations of the State Board of Land Surveyors, and that the same is a true and correct copy of the original filed in my office on the 11th day of January, 1994.

W. F. Bennett, Jr.  
11-21-94  
Date

STATE OF TEXAS  
COUNTY OF WILLIAMSON

I, Daniel A. Harbeck, do hereby certify that the information contained on this plat complies with the subdivision ordinances and the stormwater drainage policy adopted by the City of Round Rock, Texas.

Daniel A. Harbeck  
11-21-94  
Date

STATE OF TEXAS  
COUNTY OF WILLIAMSON

I, Michael S. Bennett, Vice President of G29 Auto Exchange Inc., do hereby certify that the information contained on this plat complies with the subdivision ordinances and the stormwater drainage policy adopted by the City of Round Rock, Texas.

Michael S. Bennett  
11-21-94  
Date

STATE OF TEXAS  
COUNTY OF WILLIAMSON

I, J. M. Harrell, do hereby certify that the information contained on this plat complies with the subdivision ordinances and the stormwater drainage policy adopted by the City of Round Rock, Texas.

J. M. Harrell  
11-21-94  
Date

STATE OF TEXAS  
COUNTY OF WILLIAMSON

I, J. M. Harrell, do hereby certify that the information contained on this plat complies with the subdivision ordinances and the stormwater drainage policy adopted by the City of Round Rock, Texas.

J. M. Harrell  
11-21-94  
Date

STATE OF TEXAS  
COUNTY OF WILLIAMSON

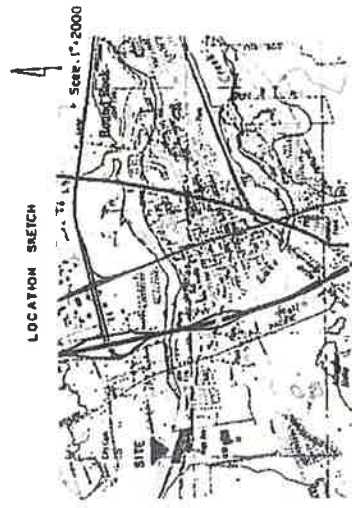
I, J. M. Harrell, do hereby certify that the information contained on this plat complies with the subdivision ordinances and the stormwater drainage policy adopted by the City of Round Rock, Texas.

J. M. Harrell  
11-21-94  
Date

STATE OF TEXAS  
COUNTY OF WILLIAMSON

I, J. M. Harrell, do hereby certify that the information contained on this plat complies with the subdivision ordinances and the stormwater drainage policy adopted by the City of Round Rock, Texas.

J. M. Harrell  
11-21-94  
Date



APPROVED THIS 11th day of January, 1994, by the City of Round Rock, Texas, and authorized to be filed for record by the County Clerk of Williamson County, Texas.

City of Round Rock, Texas

Approved by the City of Round Rock, Texas, and authorized to be filed for record by the County Clerk of Williamson County, Texas.

City of Round Rock, Texas

APPROVED THIS 11th day of January, 1994, by the City of Round Rock, Texas, and authorized to be filed for record by the County Clerk of Williamson County, Texas.

City of Round Rock, Texas

Approved by the City of Round Rock, Texas, and authorized to be filed for record by the County Clerk of Williamson County, Texas.

City of Round Rock, Texas

APPROVED THIS 11th day of January, 1994, by the City of Round Rock, Texas, and authorized to be filed for record by the County Clerk of Williamson County, Texas.

City of Round Rock, Texas

Approved by the City of Round Rock, Texas, and authorized to be filed for record by the County Clerk of Williamson County, Texas.

City of Round Rock, Texas

APPROVED THIS 11th day of January, 1994, by the City of Round Rock, Texas, and authorized to be filed for record by the County Clerk of Williamson County, Texas.

City of Round Rock, Texas

Approved by the City of Round Rock, Texas, and authorized to be filed for record by the County Clerk of Williamson County, Texas.

City of Round Rock, Texas

APPROVED THIS 11th day of January, 1994, by the City of Round Rock, Texas, and authorized to be filed for record by the County Clerk of Williamson County, Texas.

City of Round Rock, Texas

Approved by the City of Round Rock, Texas, and authorized to be filed for record by the County Clerk of Williamson County, Texas.

City of Round Rock, Texas

APPROVED THIS 11th day of January, 1994, by the City of Round Rock, Texas, and authorized to be filed for record by the County Clerk of Williamson County, Texas.

City of Round Rock, Texas

Approved by the City of Round Rock, Texas, and authorized to be filed for record by the County Clerk of Williamson County, Texas.

City of Round Rock, Texas

APPROVED THIS 11th day of January, 1994, by the City of Round Rock, Texas, and authorized to be filed for record by the County Clerk of Williamson County, Texas.

City of Round Rock, Texas

Approved by the City of Round Rock, Texas, and authorized to be filed for record by the County Clerk of Williamson County, Texas.

City of Round Rock, Texas

**FINAL PLAT**

**WILL GALLER SUBDIVISION**

**OWNER:**  
G29 Auto Exchange Inc.  
Michael E. Bennett, Vice-President  
5.637 Acres

**SURVEY:**  
J. M. HARRELL, ABSTRACT NO. 284

**NUMBER OF BLOCKS:** 1

**NUMBER OF LOTS:** 4

**DATE:** JANUARY 1994

**SURVEYOR:** WILF P. FOREST JR.  
**ENGINEER:** DANIEL A. SHANAHAN  
**BENCH MARKS:** Brass cap in concrete monument  
Location: E Line Lot 1, 200' from S E corner  
Elevation: 727' M S L



COUNTY CLERK  
COUNTY OF WILLIAMSON, TEXAS

By *Supersabido* Deputy

STATE OF TEXAS  
COUNTY OF WILLIAMSON

I, William F. Bennett, Jr., Registered Professional Land Surveyor, do hereby certify that this plat from an actual and accurate non-topographic survey of the land shown hereon was prepared in accordance with the laws of the State of Texas and the rules and regulations of the State Board of Land Surveyors, and that the same is a true and correct copy of the original filed in my office on the 11th day of January, 1994.

W. F. Bennett, Jr.  
11-21-94  
Date

STATE OF TEXAS  
COUNTY OF WILLIAMSON

I, Daniel A. Harbeck, do hereby certify that the information contained on this plat complies with the subdivision ordinances and the stormwater drainage policy adopted by the City of Round Rock, Texas.

Daniel A. Harbeck  
11-21-94  
Date

STATE OF TEXAS  
COUNTY OF WILLIAMSON

I, Michael S. Bennett, Vice President of G29 Auto Exchange Inc., do hereby certify that the information contained on this plat complies with the subdivision ordinances and the stormwater drainage policy adopted by the City of Round Rock, Texas.

Michael S. Bennett  
11-21-94  
Date

STATE OF TEXAS  
COUNTY OF WILLIAMSON

I, J. M. Harrell, do hereby certify that the information contained on this plat complies with the subdivision ordinances and the stormwater drainage policy adopted by the City of Round Rock, Texas.

J. M. Harrell  
11-21-94  
Date

STATE OF TEXAS  
COUNTY OF WILLIAMSON

I, J. M. Harrell, do hereby certify that the information contained on this plat complies with the subdivision ordinances and the stormwater drainage policy adopted by the City of Round Rock, Texas.

J. M. Harrell  
11-21-94  
Date

STATE OF TEXAS  
COUNTY OF WILLIAMSON

I, J. M. Harrell, do hereby certify that the information contained on this plat complies with the subdivision ordinances and the stormwater drainage policy adopted by the City of Round Rock, Texas.

J. M. Harrell  
11-21-94  
Date

STATE OF TEXAS  
COUNTY OF WILLIAMSON

I, J. M. Harrell, do hereby certify that the information contained on this plat complies with the subdivision ordinances and the stormwater drainage policy adopted by the City of Round Rock, Texas.

J. M. Harrell  
11-21-94  
Date

STATE OF TEXAS  
COUNTY OF WILLIAMSON

I, J. M. Harrell, do hereby certify that the information contained on this plat complies with the subdivision ordinances and the stormwater drainage policy adopted by the City of Round Rock, Texas.

J. M. Harrell  
11-21-94  
Date



Cat E. 11/11/2023

# CREEKSIDE PLAZA

4572

FILED FOR RECORD 6.696 Acres  
December, 1982

APR 27 1983

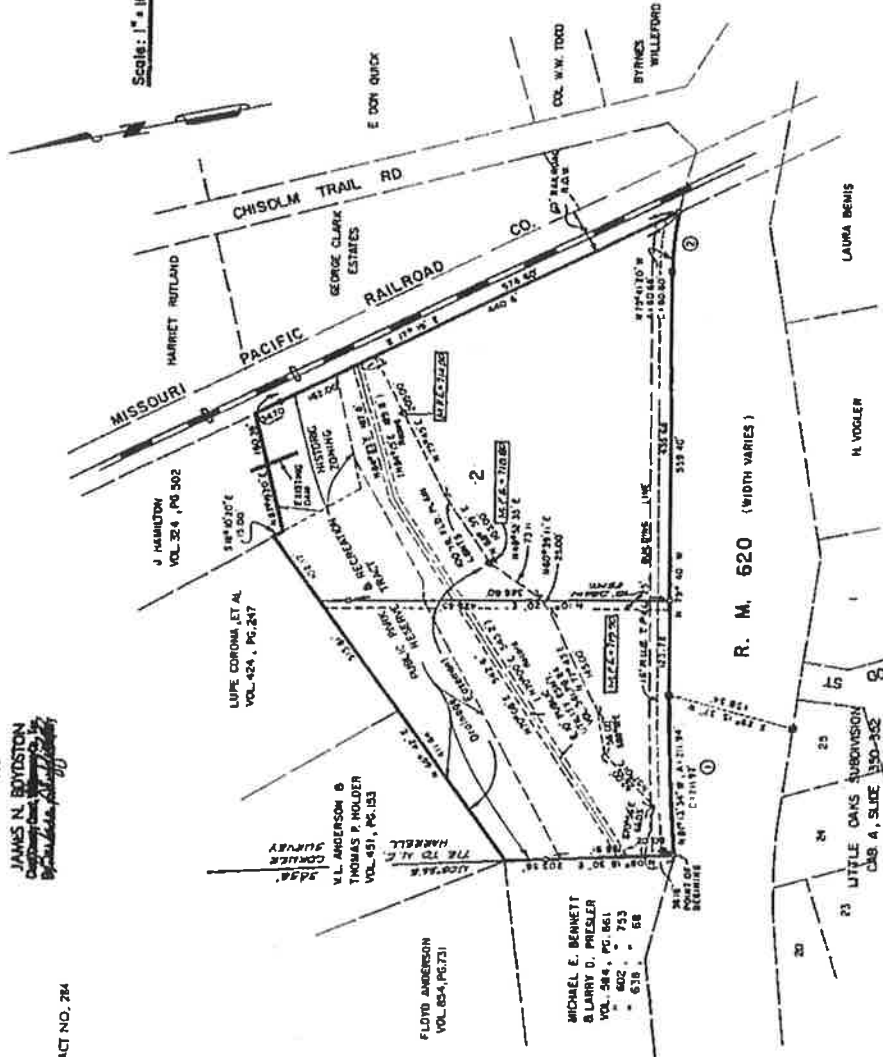
JAMES N. BOYDSTON  
Surveyor

OWNER: CREEKSIDE PLAZA, INC.  
ACREAGE: 6.696 AC.  
SUBJECT: JACOB M. HARBEL SURVEY ABSTRACT NO. 284  
NO. OF BLOCKS: 0 BLOCKS  
NO. OF LOTS: 1015  
ZONING: C-1 DISTRICT  
L.F. OF NEW STRIPS: 0- LINEAR FEET  
DATE: DECEMBER 1982  
SURVEYOR: MEYER-LYTTON ALLEN, INC.  
ENGINEER: MEYER-LYTTON ALLEN, INC.

### LEGEND

- Iron Pin Found
- Iron Pin Set
- Brass Pin Found
- Brass Pin Set
- Concrete Line
- Surveying Line
- M.T.E. - Minimum Footprint Elevation

Scale: 1" = 100'



### CURVE DATA

Station	Angle	Radius
A	3° 07' 48"	7° 37' 24"
B	3679.72'	580.87'
C	211.94'	60.68'
D	211.92'	60.60'
E	106.00'	40.40'

### LAND USE DATA

LOT	ACREAGE	PROPOSED USE
1	2.448	COMMERCIAL
2	4.250	COMMERCIAL
TOTAL	6.698	

### PREPARED BY:

MEYER-LYTTON ALLEN, INC.  
208 ANCHOR LANE  
AUSTIN, TEXAS 78723  
ENGINEERS/SURVEYORS 612/574-6251

### OWNER:

CREEKSIDE PLAZA INC.  
1203 SAM BASS ROAD  
ROUND ROCK, TEXAS 78684  
512/393-2250

### NOTE

EXISTING TEXAS POWER &  
LIGHT EASEMENT LOCATION  
UNDEFINED - VOL. 446, PG 28

STATE OF TEXAS

COUNTY OF WILLIAMSON

KNOW ALL MEN BY THESE PRESENTS

That Creekside Plaza, Inc., a corporation organized and existing under the laws of the State of Texas with name offices in Round Rock, Texas, etc. by the through its President, Robert E. Clark, owner of 4,250 sq. ft. of land to him by deed recorded in Volume 566, Page 872 of the Deed Records of Williamson County, Texas, and that Robert W. Dohy, Trustee, owner of 2,446 acres of land conveyed to him by deed recorded in Volume 552, Page 356 of the Deed Records of Williamson County, Texas, as hereby subdivided a total of 6.696 acres of land out of the 2,446 acre tract in Williamson County, Texas, to be known as CREEKSIDE PLAZA, and do hereby dedicate to the use of the public all streets, alleys, parks, water courses, drains, easements, and public places shown hereon.

And, it is further understood that the enforcement of the plat restriction is the responsibility of the developer owner of the City of Round Rock and the Commissioner's Court of Williamson County, Texas, and that the City of Round Rock and the Commissioner's Court of Williamson County, Texas, shall have the right and authority to enforce the plat restrictions, the City of Round Rock shall have the right to prohibit the construction, connection, use, or maintenance of any permit unless it will be in compliance with the plat restrictions and have been achieved.

WITNESSE MY HAND THIS 2 DAY OF JANUARY, 1983, A.D.

Robert W. Dohy, Trustee
Robert E. Clark

STATE OF TEXAS

COUNTY OF WILLIAMSON

KNOW ALL MEN BY THESE PRESENTS

Before me, the undersigned authority on this day personally appeared Robert E. Clark, Trustee in Creekside Plaza, Inc., known to me to be the person whose name is subscribed in the foregoing instrument and acknowledged to me that he executed the same for the purposes and consideration therein expressed and in the capacity stated.

GIVEN UNDER MY HAND AND SEAL of office this the 3 day of JANUARY, 1983, A.D.

Notary Public in and for Williamson County, Texas
My Commission Expires 11/15/84

STATE OF TEXAS

COUNTY OF TRAVIS

KNOW ALL MEN BY THESE PRESENTS

Before me, the undersigned authority on this day personally appeared Robert E. Clark, Trustee, known to me to be the person whose name is subscribed in the foregoing instrument and acknowledged to me that he executed the same for the purposes and consideration therein expressed and in the capacity stated.

GIVEN UNDER MY HAND AND SEAL of office this the 10 day of JANUARY, 1983, A.D.

Notary Public in and for Williamson County, Texas
My Commission Expires 11/15/84

CREEKSIDE PLAZA

6.696 Acres
December, 1982

FIELD NOTES FOR CREEKSIDE PLAZA

Being 6.696 acres of land, more or less, one of the Jack W. Marshall surveys, Abstract No. 260 situated in the City of Round Rock, Williamson County, Texas, and being more particularly described by the metes and bounds which follow:

BEGINNING at an iron pin set on the north R.O.W. line of R.M. Highway No. 420, for the southeast corner of the herein described 6.696 acre tract of land;

THENCE N 65° 18' 10" E, along the 6.496 acre west line, passing THENCE N 65° 18' 10" E, along the 6.496 acre west line, distance of 203.56 feet to a point;

THENCE N 65° 42' E, 313.81 feet to a point;

THENCE S 18° 10' 20" E, 15.08 feet to a point;

THENCE N 83° 19' 20" E, 160.39 feet to a point for the northeast corner of the herein described tract of land;

THENCE S 17° 19' E, along the east line of the said 6.496 acre tract, passing an iron pin found at 38.70 feet and north R.O.W. line a total distance of 576.40 feet to an iron pin set in the north R.O.W. line of R.M. Highway No. 420;

THENCE 80.65 feet along an arc of a curve to the left, having a central angle of 72.777 degrees, a radius of 500.87 feet, a tangent of 40.40 feet, and a chord which bears N 71° 43' 20" W, a distance of 80.40 feet, to a concrete highway monument found;

THENCE N 79° 48' W, 539.42 feet to a concrete highway monument found;

THENCE 311.24 feet along an arc of a curve to the left, having a central angle of 35.868 degrees, a radius of 309.77 feet, a tangent of 108.00 feet, and a chord which bears N 61° 13' 34" W, a distance of 311.91 feet, to the PLACE OF BEGINNING, containing 6.696 acres of land, more or less.

PREPARED BY:

MOYER-LYTON-ALLEN, INC.
2011 Anchor Lane
Austin, Texas 78777

STATE OF TEXAS

COUNTY OF WILLIAMSON

I, John W. Whitaker, J.L.M., do hereby certify that the information contained on this plat was prepared in accordance with the ordinances and the starometer of Williamson County, Texas, adopted by the City of Round Rock, Texas.

John W. Whitaker, J.L.M., City Engineer
Date 12/14/82

STATE OF TEXAS

COUNTY OF WILLIAMSON

KNOW ALL MEN BY THESE PRESENTS

I, Kirby T. Meyer, do hereby certify that I prepared this plat from an accurate on-the-ground survey of the land shown hereon. The corner monuments shown thereon were properly placed under my personal supervision, in accordance with the Subdivision Regulations of the City of Round Rock, Texas.

Kirby T. Meyer, R.P.S., 92516
Date 1-3-83

NOTES

The lot on this subdivision should be occupied until connected to a potable water supply and a wastewater collection system provided by the City of Round Rock, Texas.

FLOOD PLAIN NOTE

In accordance with drainage analysis calculations performed by Moyer-Lyton-Allen, Inc., the 100-year flood plain is contained within the drainage easements shown herein.

RESTRICTIONS

- 1. Prior to construction, drainage plans will be submitted to the City of Round Rock Public Works Department for review. Resurfacing shall be limited to maximum rate at undeveloped status by detention at other approved methods.
2. Building slab elevation shall be 1 ft. above any point on the lot within 3 ft. of the perimeter of the building then the top of the curb.
3. Prior to grading, any type of earth moving, construction of an embankment, or the installation of a drainage plan be signed by a registered professional engineer that shall be submitted for the approval of the City of Round Rock and the Commissioners' Court of Williamson County for review and approval.

APPROVED FOR ACCEPTANCE

Approved this 20th day of January, 1983, by the City Planning and Zoning Commission of the City of Round Rock, Texas.

H. A. Ward, Chairman
John E. Stone, City Secretary

PASSED AND APPROVED:

This the 20th day of January, 1983, A.D.

ATTEST:

John W. Whitaker, City Engineer

AUTHORIZED TO BE FILED FOR RECORD BY WILLIAMSON COUNTY, TEXAS

STATE OF TEXAS

COUNTY OF WILLIAMSON

I, James H. Boylston, Clerk of the County Court of Williamson County, Texas, do hereby certify that the foregoing instrument was filed for record in my office on this day of January, 1983, A.D., at 4:50 o'clock P.M., and that the same is a true and correct copy of the original as the same appears in the plat records of said County, Texas.

James H. Boylston, Clerk
County Court, Williamson County, Texas