

EXHIBIT**"A"**

STATE OF TEXAS

§

§

COUNTY OF WILLIAMSON

§

**SUPPLEMENTAL CONTRACT NO. 8
TO CONTRACT FOR ENGINEERING SERVICES****FIRM:** ATKINS NORTH AMERICA, INC. ("Engineer")**ADDRESS:** 6504 Bridge Point Parkway, Suite 200, Austin, TX 78730**PROJECT:** Creek Bend Boulevard

This Supplemental Contract No. 8 to Contract for Engineering Services is made by and between the City of Round Rock, Texas, hereinafter called the "City" and Atkins North America, Inc., hereinafter called the "Engineer".

WHEREAS, the City and Engineer executed a Contract for Engineering Services, hereinafter called the "Contract", on the 26th day of January, 2012 for the Creek Bend Boulevard Project in the amount of \$179,898.43; and

WHEREAS, the City and Engineer executed Supplemental Contract No. 1 on July 12, 2012 to amend the scope of services and to increase the compensation by \$805,808.42 to a total of \$985,706.85; and

WHEREAS, the City and Engineer executed Supplemental Contract No. 2 on December 14, 2012 to amend the scope of services and to increase the compensation by \$21,570.57 to a total of \$1,007,277.42; and

WHEREAS, the City and Engineer executed Supplemental Contract No. 3 on March 8, 2013 to amend the scope of services and to increase the compensation by \$49,900.00 to a total of \$1,057,177.42; and

WHEREAS, the City and Engineer executed Supplemental Contract No. 4 on August 22, 2013 to amend the scope of services and to increase the compensation by \$160,332.84 to a total of \$1,217,510.26; and

WHEREAS, the City and Engineer executed Supplemental Contract No. 5 on October 15, 2013 to amend the provisions for the scope of services; and

WHEREAS, the City and Engineer executed Supplemental Contract No. 6 on March 13, 2014 to amend the scope of services and to increase the compensation by \$82,089.99 to a total of \$1,299,600.25; and

WHEREAS, the City and Engineer executed Supplemental Contract No. 7 on October 9, 2014 to amend the scope of services and to increase the compensation by \$186,383.73 to a total of \$1,485,983.98; and

WHEREAS, it has become necessary to amend the Contract to modify the provisions for the scope of services and to increase the compensation by \$159,095.13 to a total of \$1,645,079.11;

NOW THEREFORE, premises considered, the City and the Engineer agree that said Contract is amended as follows:

I.

Article 2, Engineering Services and Exhibit B, Engineering Services shall be amended as set forth in the attached Addendum To Exhibit B. Exhibit C, Work Schedule shall be amended as set forth in the attached Addendum To Exhibit C.

II.

Article 4, Compensation and Exhibit D, Fee Schedule shall be amended by increasing by \$159,095.13 the lump sum amount payable under the Contract for a total of \$1,645,079.11, as shown by the attached Addendum to Exhibit D.

IN WITNESS WHEREOF, the City and the Engineer have executed this Supplemental Contract in duplicate.

ATKINS NORTH AMERICA, INC.

By: _____

Date

CITY OF ROUND ROCK

By: _____
Alan McGraw, Mayor

Date

APPROVED AS TO FORM:

Stephan L. Sheets, City Attorney

ADDENDUM TO EXHIBIT B

Engineering Services

PROJECT DESCRIPTION

This Supplemental Contract consists of additional construction phase services relating to bridge inspection, progress meetings, review of pay applications, final walk through participation, and punch list preparation.

TASK 1: SURVEYING – Not Included with this Supplemental

TASK 2: ROUTE STUDY – Not Included with this Supplemental

TASK 3: ENVIRONMENTAL STUDIES – Not Included with this Supplemental

TASK 4: PRELIMINARY DESIGN/30% PLANS – Not Included with this Supplemental

TASK 5: PROJECT MANAGEMENT

1. Manage additional activities described in task 14.

TASK 6: DIRECT EXPENSES

1. Mileage for site visits and meetings
2. Inspector vehicle maintenance, insurance, and fuel

TASK 7: WATER IMPROVEMENTS – Not Included with this Supplemental

TASK 8: UTILITY LOCATIONS/LAYOUTS – Not Included with this Supplemental

TASK 9: GEOTECHNICAL DESIGN – Not Included with this Supplemental

TASK 10: 60% PLANS – Not Included with this Supplemental

TASK 11: 95% PLANS – Not Included with this Supplemental

TASK 12: 100% PLANS/FINAL SUBMITTAL – Not Included with this Supplemental

TASK 13: 100% LANDSCAPING AND FENCE PLANS – Not Included with this Supplemental

TASK 14: CONSTRUCTION PHASE SERVICES

1. The ENGINEER shall provide construction inspection services related to the bridge structure, including foundations, substructure and superstructure, for compliance with the Contract documents. Based on the contractor's baseline schedule it is assumed that the bridge inspection will last for 4 months. Inspection scope of services shall include:
 - Verify that the bridge structure is built according to the plans and specifications, and all contract documents
 - Verify the accuracy of the work and determine pay quantities by taking measurements of the quantities placed
 - Verify all the specifications are met for inspected items of work regarding materials, construction, measurement and payment
 - Verify and record daily quantities for each item of work for the purposes of review and approval of the contractor's monthly pay estimate
 - Verify all material sourcing information is from an approved source
 - Maintain a daily work report (DWR) to document construction activity and progress
 - Collect and maintain all material tickets for the project files
 - Conduct pre-activity meetings prior to major operations
 - Coordinate and schedule necessary materials testing
 - Review and comment, as appropriate, on applicable material test reports
 - Document and facilitate the resolution of deficiencies
 - Conduct hold-point inspections utilizing check lists for the following structure elements:
 - (1) Drill shafts
 - (2) Footings
 - (3) Columns
 - (4) Caps
 - (5) Abutments
 - (6) Reinforcing steel
 - (7) Deck panels
 - (8) Deck forms
 - (9) Overhangs
 - (10) Deck grading
 - (11) Deck reinforcing steel
 - (12) Expansion joints
 - Attend bi-weekly project progress meetings
 - Review and comment, as applicable, on the contractor's monthly schedule of reported progress and planning
 - Review contractor's monthly pay request for approval
 - Coordinate resolution to requests for information (RFIs)
 - Assist, as applicable, in the development and review of change orders
 - Provide input on as-built drawings

2. Project Manager will attend weekly project status meetings.
3. Inspector will attend up to 25 bi-weekly progress meetings and prepare meeting notes/action items as appropriate. A site visit will also be performed in conjunction with the meeting to stay familiar with the status of the project. Progress meetings during the bridge inspection are included under bridge inspection. These additional 25 meetings are for the 11 months the bridge inspector is not on-site full time.
4. Review up to 11 monthly pay applications. Pay applications during the bridge inspection are included under bridge inspection. These additional 11 pay application reviews are for the 11 months the bridge inspector is not on-site full time.
5. The ENGINEER shall provide construction schedule support services for the following:
 - Review, analysis and comment of the contractor's baseline schedule
 - Review, analysis and comment of the contractor's monthly schedule updates
 - Review, analysis and comment of the contractor's final as-built schedule
6. Participate in final walkthrough and prepare the punch list.

EXCLUSIONS

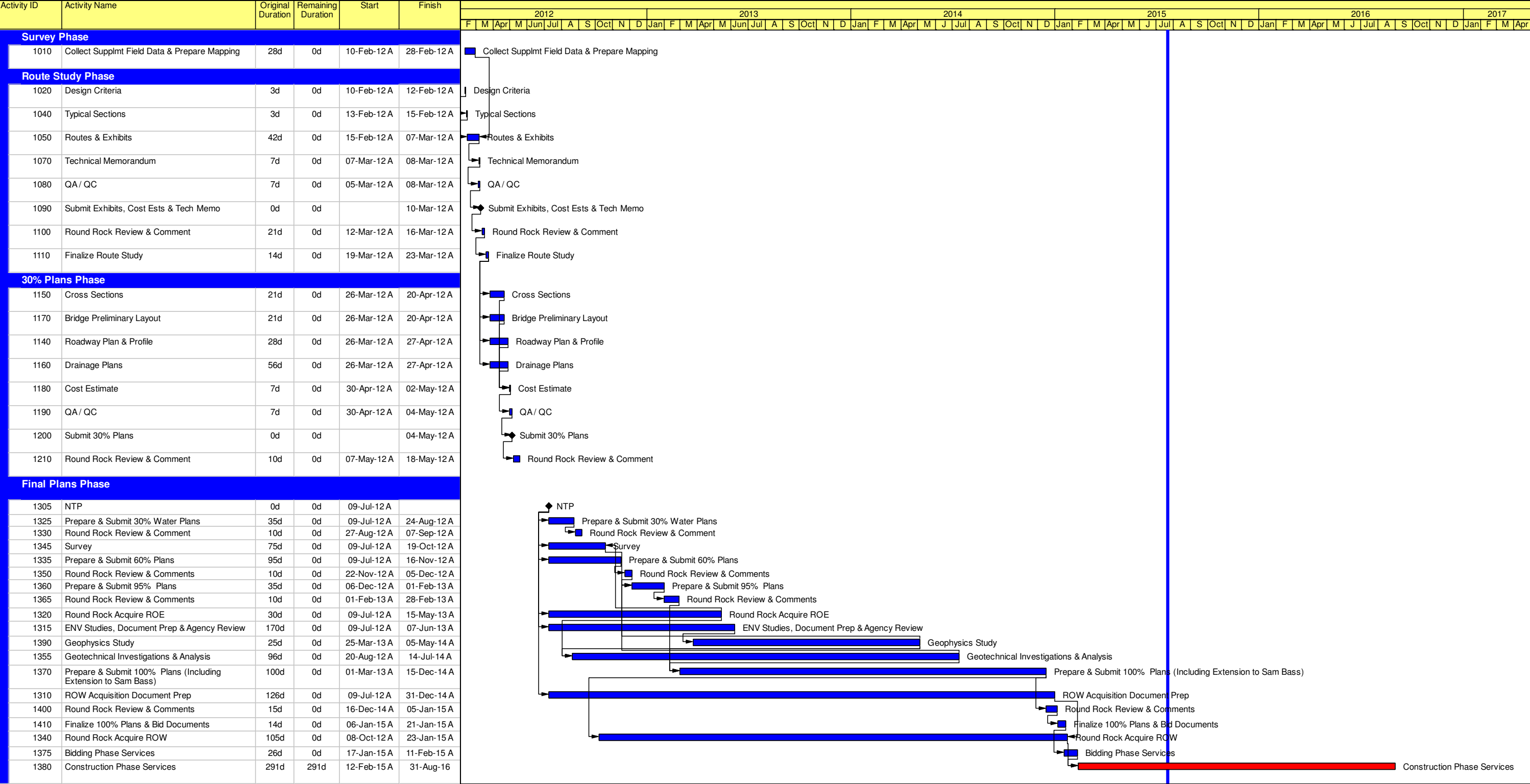
1. All bridge inspection services not specifically identified above, including but not limited to:
 - Geotechnical investigations and analysis
 - Materials testing
 - Construction survey; verification of contractor's horizontal and vertical control
2. All tasks related to delay and cost claims shall be considered supplemental services and subject to additional fee, specifically, but not limited to:
 - Time Impact Analyses (TIA) for delay claims
 - Claims defense, response and resolution

DELIVERABLES

1. Meeting notes, when necessary, for bi-weekly progress meetings.
2. Material test report review comments.
3. Review for up to 15 monthly pay applications including supporting documentation.
4. Schedule review comments
5. Punch list.

ADDENDUM TO EXHIBIT C
Work Schedule

Attached Behind This Page



ADDENDUM TO EXHIBIT D
Fee Schedule

Task	Total Labor Hours	Total Loaded Labor Cost	Other Direct Costs	Subconsultants	TOTALS
Task 5: Project Management	40.0	\$ 7,503.88			\$ 7,503.88
Task 6: Direct Expenses			\$ 2,862.50		\$ 2,862.50
Task 14: Construction Phase Services	1,190.0	\$ 148,728.75			\$ 148,728.75
GRAND TOTAL:	1,230.0	\$ 156,232.63	\$ 2,862.50	\$ -	\$ 159,095.13

Overhead Rate = 170.07%
Profit Rate = 12%

Atkins Raw Labor = \$ 51,650.84
Atkins Overhead = \$ 87,842.58
Atkins Profit = \$ 16,739.21
Atkins Total Labor = \$ 156,232.63

**CREEK BEND BLVD EXTENSION
SUPPLEMENTAL #8
ATTACHMENT D**

TASK 5: PROJECT MANAGEMENT				
Task Description	Project Manager	Design EIT	Admin/ Clerical	Total Hours
<i>Rates</i>	\$ 62.02	\$ 34.82	\$ 31.50	
Project Management				
1. Manage additional construction activities	40			40
Totals	40			40
Raw Labor	\$ 2,480.80	\$ -	\$ -	\$ 2,480.80
Multiplier	3.02	3.02	3.02	
	\$ 7,503.88	\$ -	\$ -	\$ 7,503.88

**CREEK BEND BLVD EXTENSION
SUPPLEMENTAL #8
ATTACHMENT D**

TASK 6: DIRECT EXPENSES				
Direct Cost	Unit	Quantity	Unit Price	Total
Site Visits & Meetings				
Mileage	Mile	1500	\$0.575	\$862.50
Vehicle Maintenance, Insurance & Fuel	Month	4	\$500.000	\$2,000.00
Printing				
Exhibits (Color on Bond)	SF		\$5.00	\$0.00
Photocopies B/W (8.5 X 11)	EA		\$0.05	\$0.00
Photocopies B/W (11 X 17)	EA		\$0.10	\$0.00
Mylar Plots (11 X 17)	EA		\$2.50	\$0.00
Overnight Mail - letter size	EA		\$17.50	\$0.00
Overnight Mail - oversized box	EA		\$35.00	\$0.00
Courier Services	EA		\$37.50	\$0.00
Total Direct Expenses				\$2,862.50

**CREEK BEND BLVD EXTENSION
SUPPLEMENTAL #8
ATTACHMENT D**

TASK 14: CONSTRUCTION PHASE SERVICES									
Task Description	Senior Project Manager	Project Manager	Senior Engineer	Design Engineer	Design EIT	Project Inspector	Senior Scheduler	Admin/ Clerical	Total Hours
<i>Rates</i>	\$ 78.85	\$ 62.02	\$ 63.59	\$ 37.64	\$ 34.82	\$ 36.50	\$ 50.13	\$ 31.50	
Construction Phase Services									
1. Bridge inspection (Assume 4 months)						688			688.0
2. PM attend weekly progress meetings		150							150.0
2. Inspector attend bi-weekly progress meetings (includes site visit and notes prep)						200			200.0
3. Review pay applications		8				20			28.0
4. Review monthly schedule submittals		16					80		96.0
5. Final walkthrough and punch list prep		8				20			28.0
Totals		182.0				928.0	80.0		1,190.0
Raw Labor	\$ -	\$11,287.64	\$ -	\$ -	\$ -	\$33,872.00	\$4,010.40	\$ -	\$ 49,170.04
Multiplier	3.02	3.02	3.02	3.02	3.02	3.02	3.02	3.02	
	\$ -	\$ 34,143	\$ -	\$ -	\$ -	\$ 102,455	\$ 12,131	\$ -	\$ 148,728.75