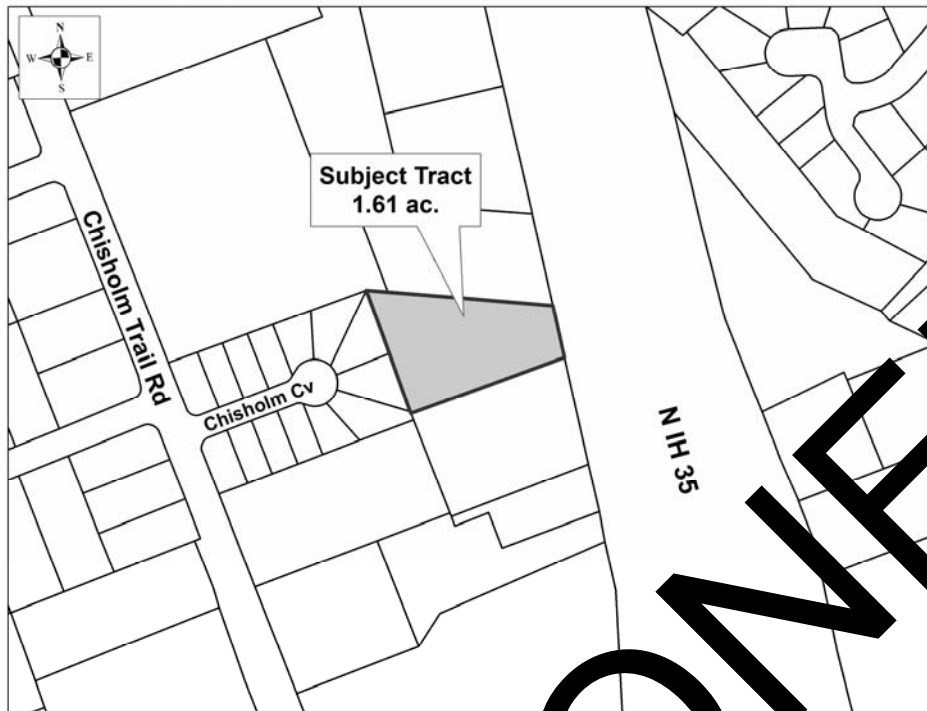


**Tabrizi 35 Subdivision**  
**CONCEPT PLAN CP1511-001**



**CASE PLANNER:** Clyde von Rosenberg

**REQUEST:** Approval of a Concept Plan for 1.61 acres

**ZONING AT TIME OF APPLICATION:** C-1 (General Commercial)

**DESCRIPTION:** 1.61 acres out of the Wiley Harp Survey, Abstract No. 298

**CURRENT USE OF PROPERTY:** vacant - remains of building foundation

**GENERAL PLAN LAND USE DESIGNATION:** commercial

**ADJACENT LAND USE:**

North: auto sales & storage (C-1 General Commercial)

South: motel (C-1 General Commercial)

East: IH-35

West: duplexes (Two Family)

**PROPOSED LAND USE:** commercial

<u>PROPOSED LAND USE TYPE</u>	<u>NUMBER OF LOTS</u>	<u>ACREAGE</u>
Residential - Single Unit	0	0.00
Residential - Multi Unit	0	0.00
Office	0	0.00
Commercial:	1	1.61
Industrial:	0	0.00
Open/Common Space:	0	0.00
Road:	0	0.00
Parkland:	0	0.00
Other:	0	0.00

**TOTALS:** **1** **1.61**

**Owner:**

Ali Tabrizi  
 1102 Clair Ave.  
 Austin, TX 78703

**Applicant**

Professional StruCIVIL Engineers,  
 Inc.  
 Mirza T. Baig, P.E.  
 12710 Research Blvd., Ste. 390

**Agent**

Professional StruCIVIL Engineers, Inc.  
 Mirza T. Baig, P.E.  
 12710 Research Blvd., Ste. 390  
 Austin, TX 78759