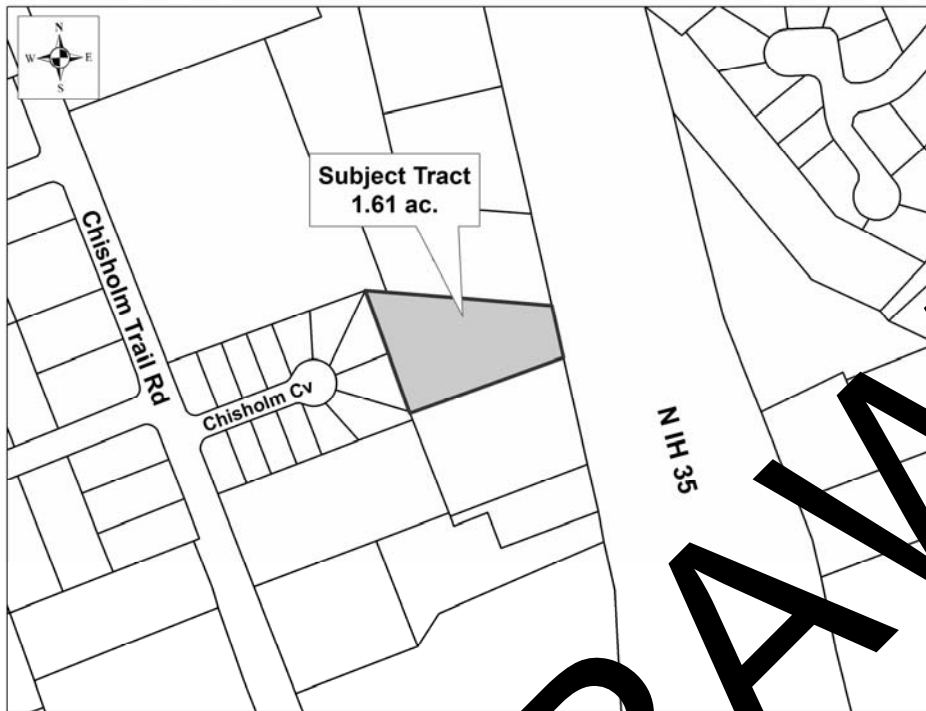


Tabrizi 35 Subdivision
CONCEPT PLAN CP1511-001



CASE PLANNER: Clyde von Rosenberg

REQUEST: Approval of a Concept Plan for 1.61 acres.

ZONING AT TIME OF APPLICATION: C-1 (General Commercial)

DESCRIPTION: 1.61 acres out of the Wiley Harris Survey, Abstract No. 298

CURRENT USE OF PROPERTY: vacant remains of a building foundation

GENERAL PLAN LAND USE DESIGNATION: commercial

ADJACENT LAND USE:

North: auto sales & storage (C-1 General Commercial)

South: motel (C-1 General Commercial)

East: IH-35

West: duplexes (F Two Family)

PROPOSED LAND USE: commercial

<u>PROPOSED LOTS BY TYPE:</u>	<u>NUMBER OF LOTS</u>	<u>ACREAGE</u>
Residential Single Unit:	0	0.00
Residential Multi Unit:	0	0.00
Office:	0	0.00
Commercial:	1	1.61
Industrial:	0	0.00
Open Green Space:	0	0.00
Parkway:	0	0.00
Parkland:	0	0.00
Other:	0	0.00
TOTALS:	1	1.61

Owner:

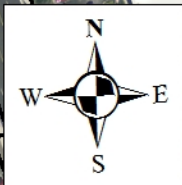
Ali Tabrizi
 1102 Clair Ave.
 Austin, TX 78703

Applicant

Professional StruCIVIL Engineers,
 Inc.
 Mirza T. Baig, P.E.
 12710 Research Blvd., Ste. 390

Agent

Professional StruCIVIL Engineers, Inc.
 Mirza T. Baig, P.E.
 12710 Research Blvd., Ste. 390
 Austin, TX 78759



**Subject Tract
1.61 ac.**

Chisholm Trail Rd

Chisholm Cv

N IH 35