

EXHIBIT
"A"

STATE OF TEXAS

§

§

COUNTY OF WILLIAMSON

§

**SUPPLEMENTAL CONTRACT NO. 1
TO CONTRACT FOR ENGINEERING SERVICES**

FIRM: K FRIESE & ASSOCIATES, INC. ("Engineer")
ADDRESS: 1120 S. Capital of Texas Hwy, Building 2 , Suite 100, Austin, TX 78746
PROJECT: Kenney Fort Boulevard Extension

This Supplemental Contract No. 1 to Contract for Engineering Services is made by and between the City of Round Rock, Texas, hereinafter called the "City" and K Friese & Associates, Inc., hereinafter called the "Engineer".

WHEREAS, the City and Engineer executed a Contract for Engineering Services, hereinafter called the "Contract", on the 9th day of April, 2015 for the Kenney Fort Boulevard Extension Project in the amount of \$450,961.00; and

WHEREAS, it has become necessary to amend the Contract to modify the provisions for the scope of services and to increase the compensation by \$79,745.00 to a total of \$530,706.00;

NOW THEREFORE, premises considered, the City and the Engineer agree that said Contract is amended as follows:

I.

Article 2, Engineering Services and Exhibit B, Engineering Services shall be amended as set forth in the attached Addendum To Exhibit B. Exhibit C, Work Schedule shall be amended as set forth in the attached Addendum To Exhibit C.

II.

Article 4, Compensation and Exhibit D, Fee Schedule shall be amended by increasing by \$79,745.00 the lump sum amount payable under the Contract for a total of \$530,706.00, as shown by the attached Addendum to Exhibit D.

IN WITNESS WHEREOF, the City and the Engineer have executed this Supplemental Contract in duplicate.

K FRIESE & ASSOCIATES, INC.

By: _____

Date

CITY OF ROUND ROCK

By: _____

Alan McGraw, Mayor

Date

APPROVED AS TO FORM:

Stephan L. Sheets, City Attorney

ADDENDUM TO EXHIBIT B

Engineering Services

UNDERSTANDING

K Friese & Associates, Inc. (KFA) will add the design of approximately 8,700 linear feet of 24-inch water transmission main to be included in the PS&E package for the Kenney Fort Boulevard project. Our understanding of the project is based on an email transmission from Leah Collier on October 5, 2015 and a follow up meeting with Chris Perkins and Jeff Bell, and consists of the following assumptions:

- Water main on a single pressure plane (no PRV's required)
- 24-inch diameter DI pipe will be used with AWWA C-900 included as a possible bid alternative
- Water line will be capped at either end for future connections
- Waterline will include several stub-outs (5 assumed for this proposal)

Additionally, KFA assumes:

- The waterline will cross Chandler Creek underground and will not be suspended from the bridge
- The waterline will be located within separate easements outside the Kenney Fort Right-of-Way. Ten (10) easement parcels have been assumed for this project.

SCOPE OF SERVICES

TASK 1 – PROJECT MANAGEMENT

1. Project Meetings – KFA will attend two (2) design review meetings with the CORR Department of Utilities to review the plans and design.

TASK 2 – FINAL DESIGN

1. Construction Plans – KFA will produce the following sheets (11" x 17" Full-Size) as appropriate for the revised roadway design. QA/QC is included in each sheet task.
 - a. WATERLINE QUANTITY SUMMARY SHEET (1 Sheet)
 - b. WATERLINE NOTES (1 Sheet)
 - c. WATERLINE PLAN AND PROFILE SHEETS (20 Sheets)
 - d. WATERLINE DETAIL SHEETS (5 Sheets)
2. Opinion of Probable Construction Cost – KFA will prepare and submit an engineer's opinion of probable construction cost in Microsoft Excel format at each submittal to the City.
3. Waterline Easements – Inland Geodetics will recover, verify, and utilize established control from work performed previously and will prepare up to ten

ADDENDUM TO EXHIBIT B

Engineering Services

(10) individual easement acquisition packages consisting of a metes and bounds description and survey plat.

4. Contract Documents – KFA will prepare a set of construction contract documents in accordance with City of Round Rock Standards including:
 - a. Technical Specifications and Provisions
 1. City of Round Rock Standard Specifications
 2. Special Technical Specifications
 3. Special Provisions
5. Bid & Award – KFA will assist the City of Round Rock with contract administration during the bid phase of the project.
 - a. Addenda Preparation – KFA will interpret plans and specifications and draft addenda, as necessary, for issuance. One (1) addendum has been assumed for budgeting purposes.
 - b. Conforming Documents – Addenda items will be incorporated into a set of “conformed” documents. We have included reproduction of 8 sets of conformed documents to be issued for construction (4 to City; 4 to Contractor).

TASK 3 – CONSTRUCTION PHASE

1. Construction Phase Services – KFA will assist the City of Round Rock with contract administration during the construction phase of the project. We understand the City of Round Rock will provide required construction inspection services, and have assumed that the construction duration will be approximately 12 months. KFA’s services will include:
 - a. Submittal Review – KFA will maintain a log of all Contractor submittals, track review progress, review and approve submittals, and distribute submittals to the appropriate parties.
 - b. Requests for Information (RFIs) – KFA will provide answers to requests for information (RFI’s) from Contractor as related to possible conflicts and clarifications needed between plans and specifications. Two (2) RFI’s have been assumed.
 - c. Record Drawings. KFA will use the Contractor’s redline as-built drawings to document as-built conditions in the final record drawings. KFA will supply the City of Round Rock with one set of reproducible record drawings and provide one set of record drawings in .pdf format.

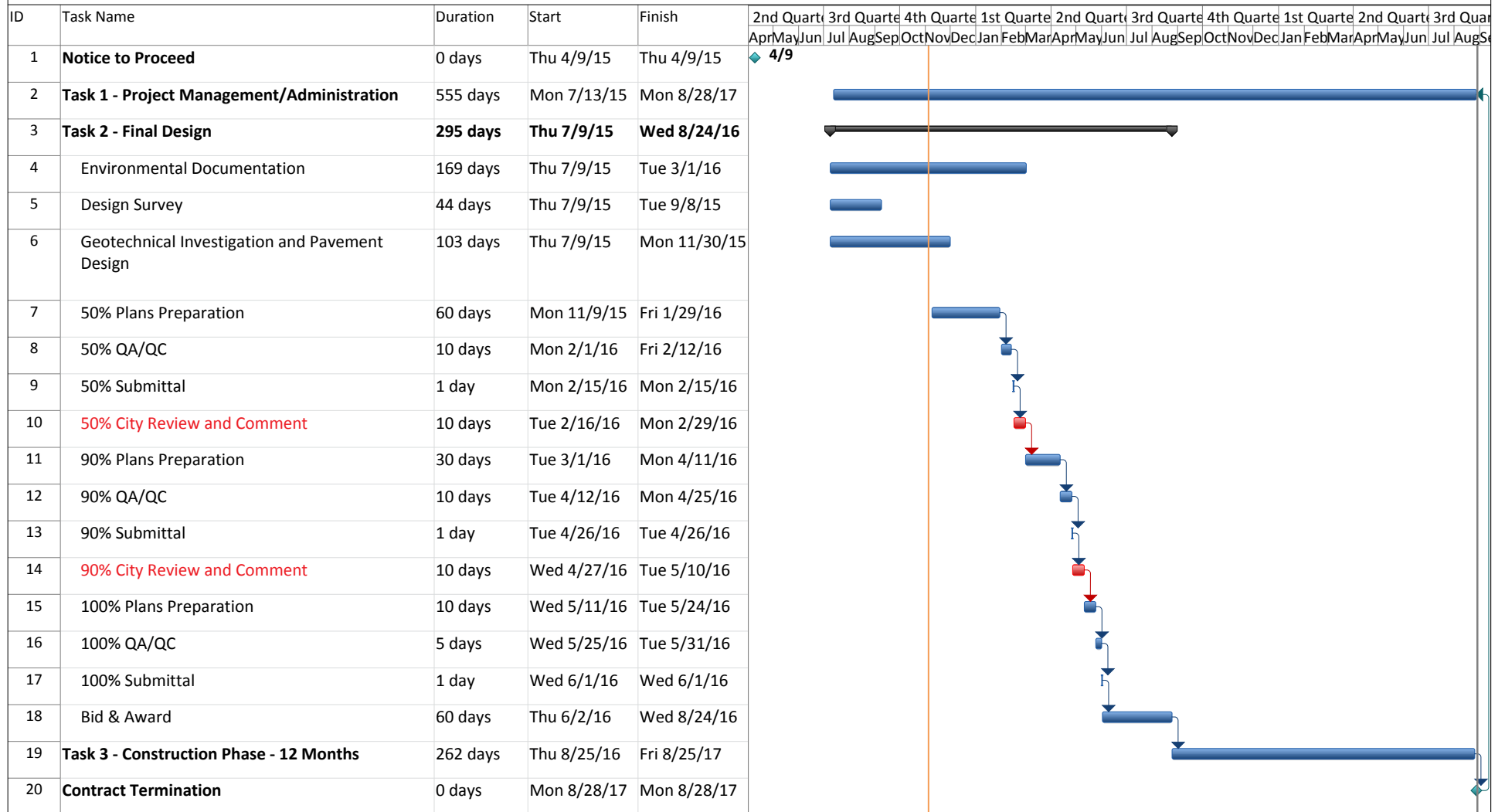
ASSUMPTIONS

1. No aerial (bridge) crossing of the water line will be required.
2. Easement title commitments will be provided by the City.

ADDENDUM TO EXHIBIT C
Work Schedule

Attached Behind This Page

Kenney Fort Boulevard Extension
Exhibit C
Work Schedule



Date: Thu 11/5/15	Task		External Tasks		Manual Task		Finish-only	
	Split		External Milestone		Duration-only		Deadline	
	Milestone		Inactive Task		Manual Summary Rollup		Progress	
	Summary		Inactive Milestone		Manual Summary			
	Project Summary		Inactive Summary		Start-only			

**ADDENDUM TO
EXHIBIT D
FEE SCHEDULE**

		Billing Rate	\$ 231.00	\$ 209.25	\$ 135.90	\$ 102.00	\$ 87.00	\$ 82.68	\$ 54.00					
Task			Principal Hours	Project Manager Hours	Senior Engineer Hours	Project Engineer Hours	EIT Hours	Sr. CADD Technician Hours	Clerical Hours	Total Labor Hours	Total Labor Cost	Sub-Consultant Cost	Expenses Cost	Total Cost
Task 1 - Project Management					6		6			12	\$1,337		\$56	\$1,393
1	Project Meetings & Status Reports (2 Meetings)				6		6			12	\$1,337		\$56	\$1,393
Subtotal Task 1			0	0	6	0	6	0	0	12	\$1,337	\$0	\$56	\$1,393
Task 2 -Final Design														
1	Construction Plans												\$50	\$50
	a. WATERLINE QUANTITY SUMMARY SHEET (1)				2	4	8				\$1,376			\$1,376
	b. WATERLINE NOTES (1)				1	4	4	4		13	\$1,223			\$1,223
	c. WATERLINE PLAN AND PROFILE SHEETS (20)				60	100	160	160		480	\$45,503			\$45,503
	d. WATERLINE DETAILS (5)				2	4	8	8		22	\$2,037			\$2,037
2	Opinion of Probable Construction Cost				2		4			6	\$620			\$620
3	Waterline Easements									0	\$0	\$17,926		\$17,926
3	Contract Documents				2	4	8			14	\$1,376			\$1,376
4	Bid & Award									0				
	b. Addenda Preparation				2	4	8	4		18	\$1,707			\$1,707
	e. Conforming Documents				2		4	8		14	\$1,281			\$1,281
Subtotal Task 2			0	0	73	120	204	184	0	567	\$55,122	\$17,926	\$50	\$73,098
Task 3 -Construction Phase														
1	a. Submittal Review				4	8	8			20	\$2,056			\$2,056
	b. Requests for Information				2		4	4		10	\$951			\$951
	c. Record Drawings				4			20		24	\$2,197		\$50	\$2,247
Subtotal Task 3			0	0	91	136	240	220	0	673	\$5,203	\$0	\$50	\$5,253
Project Totals			0	0	170	256	450	404	0	1252	\$61,662.54	\$17,926	\$156	\$79,745