

EXHIBIT
"A"

STATE OF TEXAS

§

§

COUNTY OF WILLIAMSON

§

**SUPPLEMENTAL CONTRACT NO. 6
TO CONTRACT FOR ENGINEERING SERVICES**

FIRM: ATKINS NORTH AMERICA, INC. ("Engineer")

ADDRESS: 11801 Domain Boulevard, Suite 500, Austin, TX 78758

PROJECT: E. Bagdad Avenue Extension

This Supplemental Contract No. 6 to Contract for Engineering Services is made by and between the City of Round Rock, Texas, hereinafter called the "City" and Atkins North America, Inc., hereinafter called the "Engineer".

WHEREAS, the City and Engineer executed a Contract for Engineering Services, hereinafter called the "Contract", on the 24th day of September, 2015 for the E. Bagdad Avenue Extension Project in the amount of \$104,700.41; and

WHEREAS, the City and Engineer executed Supplemental Contract No. 1 on March 10, 2016 to amend the scope of services and to increase the compensation by \$326,360.94 to a total of \$431,061.35; and

WHEREAS, the City and Engineer executed Supplemental Contract No. 2 on September 8, 2016 to amend the scope of services and to increase the compensation by \$85,675.85 to a total of \$516,737.20; and

WHEREAS, the City and Engineer executed Supplemental Contract No. 3 on April 3, 2017 to amend the work schedule; and

WHEREAS, the City and Engineer executed Supplemental Contract No. 4 on August 24, 2017 to amend the scope of services and to increase the compensation by \$199,281.31 to a total of \$716,018.51; and

WHEREAS, the City and Engineer executed Supplemental Contract No. 5 on March 22, 2018, to amend the scope of services and to increase the compensation by \$100,929.81 to a total of \$816,948.32; and

WHEREAS, it has become necessary to amend the Contract to modify the provisions for the scope of services and to increase the compensation by \$68,879.10 to a total of \$885,827.42;

NOW THEREFORE, premises considered, the City and the Engineer agree that said Contract is amended as follows:

I.

Article 2, Engineering Services and Exhibit B, Engineering Services shall be amended as set forth in the attached Addendum to Exhibit B. Exhibit C, Work Schedule shall be amended as set forth in the attached Addendum to Exhibit C.

II.

Article 4, Compensation and Exhibit D, Fee Schedule shall be amended by increasing by \$68,879.10 the lump sum amount payable under the Contract for a total of \$885,827.42, as shown by the attached Addendum to Exhibit D.

IN WITNESS WHEREOF, the City and the Engineer have executed this Supplemental Contract in duplicate.

[signature pages follow]

ATKINS NORTH AMERICA, INC.

By: _____

Date

CITY OF ROUND ROCK

APPROVED AS TO FORM:

By: _____
Craig Morgan, Mayor

Stephan L. Sheets, City Attorney

Date

ADDENDUM TO EXHIBIT B

Engineering Services

PROJECT DESCRIPTION

The proposed project will include a new location 3-lane extension of McNeil Rd between Mays St and S Black St as well as the widening of S Georgetown St to 3-lanes between S Black St and E Main St. Lampasas St will be extended from its current termini at Bagdad Ave to the new McNeil Rd extension. Lewis St will also be extended to connect to McNeil Rd. The approximate length of the project is 0.54 miles.

The project will be constructed in two phases. The first phase will include all the improvements west of and including the intersection at Burnet St. The second phase will include the proposed improvements east of Burnet St.

This supplemental includes an extension of phase 2 to approximately 150' north of Main St along Georgetown St as well as some modifications to Lewis St and Black St.

TASK 1: PROJECT MANAGEMENT

1. Project management, oversight and coordination of efforts

TASK 2: SURVEYING

1. Inland will recover, verify, and utilize established control from work performed previously in the immediate area. The values will be relative to NAD 83 Texas State Plane Coordinates, Central Zone, 4203 (scaled to surface values) and reconciled to the CORR GPS monument system. A "combined scale factor" will be derived for coordinate conversion purposes based on an average CSF of all primary point coordinates. Vertical Datum will be GPS derived orthometric heights.
2. Inland will establish a vertical control system for each project. A benchmark system will be established at approximately 500' intervals along the project route. Differential level lines will be conducted for establishing the elevation at each benchmark. A list of benchmarks with coordinates (to be used for locating purposes only), descriptions, and reported elevations will be included in the project deliverables.
3. Inland will place a utility location request with "One Call" system for designating of the underground utilities within the project limits.
4. Inland will collect spot elevations and grade breaks along the project route at intervals conducive to precise DTM generation. The data will include curbs, gutters, pavement markings, culverts, driveways, portions of parking areas, visible utilities and/or "one call" markings, drainage features, irrigation installations as encountered, trees (ornamentals and/or 8" dbh and up, if any) and any improvements within the defined area. Inland will provide flow line elevations of "wet" manholes within the project limits. Inland will generate a 1-foot contour interval DTM file of the project area.
5. Inland will perform sufficient research and of property records from various sources and office tasks to develop the record ROWs and adjacent easements of record. This task will be performed without benefit of title abstract for adjacent properties. There may be other instruments not shown or known that affect the properties.

TASK 3: ENVIRONMENTAL STUDIES

No changes with this supplemental.

TASK 4: PRELIMINARY DESIGN/30% PLANS

No changes with this supplemental.

TASK 5: DIRECT EXPENSES

No changes with this supplemental.

TASK 6: GEOTECHNICAL DESIGN

No changes with this supplemental.

TASK 7: 60% PLANS

No changes with this supplemental.

TASK 8: 95% PLANS

No changes with this supplemental.

TASK 9: 100% PLANS/FINAL SUBMITTAL

Phase 2 of the McNeil Rd Extension is being extended through the Main St intersection to approximately 150' north of Main St. The north leg of the intersection will include four 12' lanes including one NB through lane, one SB to EB left turn lane, 1 SB through lane, and 1 SB to WB right turn lane. The right turn lane will have a bay length of 100' and a taper length of 50'. The existing island-separated right turn lane will be removed. The Main St/Georgetown St intersection will be converted to a 4-way stop controlled intersection with crosswalks across the west, north and south legs. No crosswalk will be provided across the east leg of the intersection.

In addition, the Stone St connection is being removed from the project and the Black St Connection will be 40' wide at McNeil Rd and taper back to the existing width immediately after the intersection radii. The remainder of Black St will receive a 2" Type D overlay.

Lewis St will be revised to include additional parking on both sides of the road for the full length of Lewis St. A driveway will be added on the west side of Lewis St as far south as possible and the driveway on the east side will be moved to be centered on the existing alley.

A new 24' wide driveway for Union Pacific will be added on McNeil Rd directly across from Black St.

The plan revisions anticipated to be included are:

Roadway

1. Prepare cross-sections (50' intervals), calculate limits of construction, verify ROW and construction easements, and compute earthwork quantities for the extension of the project from Main St to approximately 150' north of Main St. Revise cross-sections as necessary for the changes to Lewis St.
2. Prepare one additional typical section for the extension. Revise the typical section for Black St to reflect the variable width. Remove the typical section for Stone St.

3. Prepare one additional pavement detail to reflect a pavement design provided by the City of Round Rock. The pavement design provided by the City for the portion of the project north of Main Street will be 2" Type D HMA, 4" Type B HMA, and 14" flexible base.
4. Prepare one additional removal layout for the extension.
5. Update one plan & profile sheet for the extension. Revise plan and profile sheets for the changes to Lewis St, Stone St, and Black St.
6. Update the grading plans for Lewis St, Black St and the Main St intersection. Remove the grading plan for Stone St.
7. Provide driveway profiles for the two new driveways on Lewis St and the Union Pacific driveway on McNeil Rd. The existing driveway on the west side of Georgetown approximately 150' north of Main St will be removed.
8. Update the traffic control plan narrative, sequence of construction traffic control plan, and standards for the extension.
9. Update the quantities to reflect the above changes.

Drainage

1. Check the ponding widths at the two nearest inlets on Main St (one on each side of Georgetown St). If it is determined that additional drainage design is needed it will be included in a separate supplemental. Analyze existing storm sewer system along Main St. for impacts caused by proposed extension.
2. Revise the drainage design to accommodate the proposed changes to Lewis St, Stone St, and Black St.
3. Update the SWPPP and erosion control plan sheets to include the extension.

Utilities

1. No third-party utility design or coordination is included. Atkins will provide an updated plan set to the City of Round Rock for the purposes of utility coordination.
2. The proposed reconstruction of the wastewater line will be extended to the first manhole north of Main St. This new section will be 8" and will eliminate the drop in MH-6.
3. The wastewater line between MH-7 and MH-5 will be changed to 8".
4. Update City of Round Rock standard utility drawings to the most current.
5. Attend up to 4 additional monthly utility meetings.

Traffic

1. Remove the illumination from the plans. The City of Round Rock will coordinate with Oncor to provide lighting on the power poles.
2. Update the signing and pavement markings layouts to include the extension, accommodate for removal of westbound right turn lane, and to provide a left turn lane from NB Georgetown St to WB Main St.
3. Update the signing and pavement marking layouts to accommodate the changes to Lewis St, Stone St, and Black St, and the extension

4. Prepare small sign and pavement marking summaries for the revisions.

TASK 10: WATER QUALITY PLANS AND WATER POLLUTION ABATEMENT PLANS (WPAP)

No changes with this supplemental.

TASK 11: LANDSCAPING AND IRRIGATION PLANS

No changes with this supplemental.

TASK 12: BARRIER WITH FENCE

No changes with this supplemental.

TASK 13: CONSTRUCTION PHASE SERVICES

No changes with this supplemental.

NOT INCLUDED WITHIN THIS SCOPE

1. No drainage design is included for the extension. Atkins will check the ponding widths at the existing inlets and report any concerns. If additional drainage design is needed it would be included under a separate supplemental.
2. No third-party utility design or coordination is included. Atkins will provide plans to the City of Round Rock for the purposes of utility coordination.
3. No pavement design for the extension is included. The pavement design provided by the City for the portion of the project north of Main Street will be 2" Type D HMA, 4" Type B HMA, and 14" flexible base.

DELIVERABLES

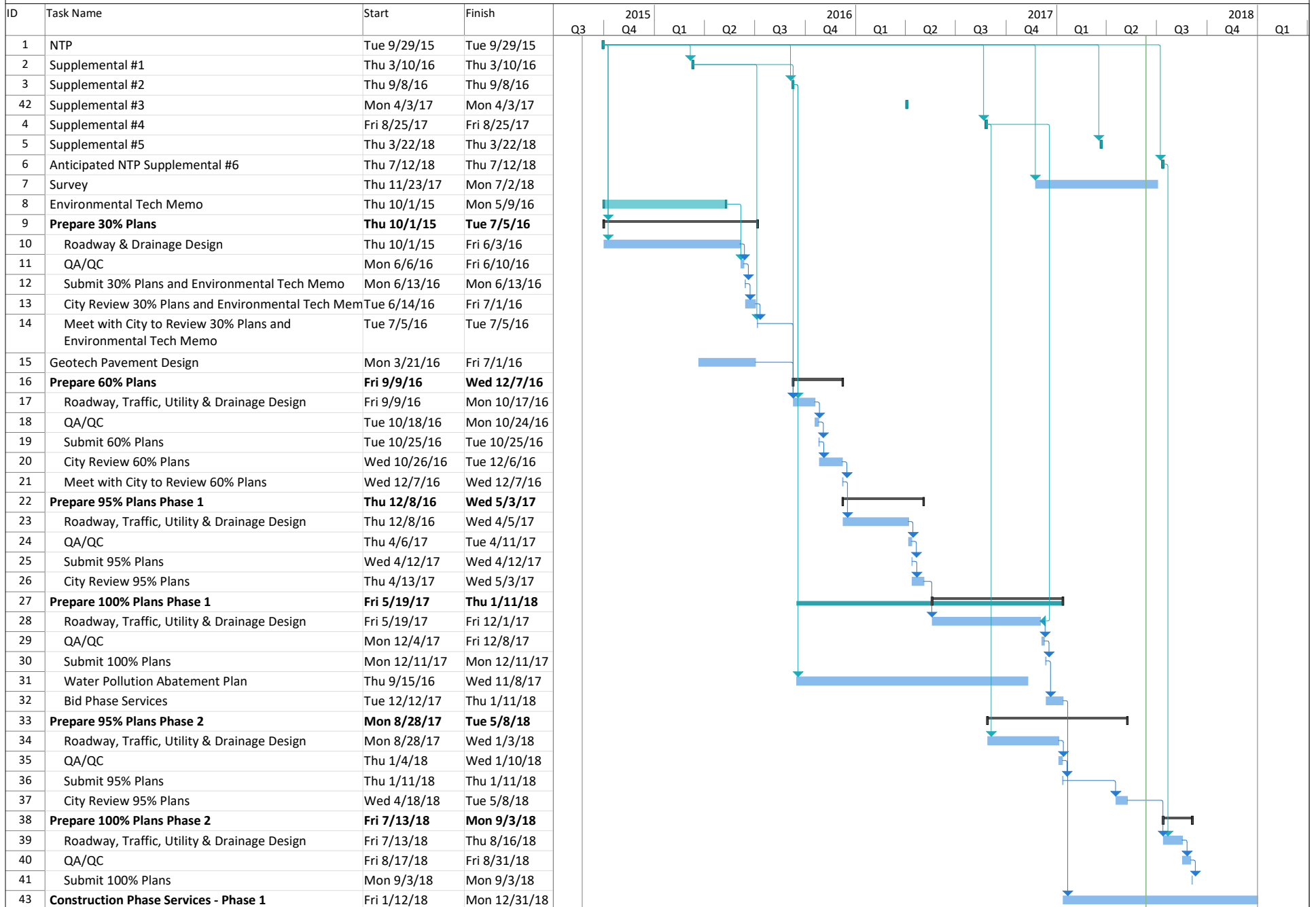
100% Submittal (Phase 2 Only)

1. A draft of the revised plan and profile and signing & pavement marking sheets will be provided for concurrence prior to completing the final deliverables.
2. Electronic submittal and two final signed and sealed sets of 11"X17" full-scale paper drawings. Specifications and special provisions will be complete and suitable for bidding and award of a construction contract.
3. One electronic file of drawings, cross sections and supporting data
4. 100% cost estimate
5. Construction time estimate

ADDENDUM TO EXHIBIT C
Work Schedule

Attached Behind This Page

E BAGDAD AVE EXTENSION SUPPLEMENTAL #6
EXHIBIT C



**ADDENDUM TO
EXHIBIT D
Fee Schedule**

Project Name: E Bagdad Ave Extension

Task	Total Labor Hours	Total Loaded Labor Cost	Other Direct Costs	Subconsultants	TOTALS
Task 1: Project Management	20.0	\$4,845.68			\$4,845.68
Task 2: Surveying				\$12,000.00	\$12,000.00
Task 9: 100% Plans/Final Submittal	444.0	\$52,033.42			\$52,033.42
GRAND TOTAL:	464	\$56,879.10	\$0.00	\$12,000.00	\$68,879.10

Overhead Rate = 157.53%
Profit Rate = 12%

Atkins Raw Labor = \$ 19,720.00
Atkins Overhead = \$ 31,064.92
Atkins Profit = \$ 6,094.18
Atkins Total Labor = \$ 56,879.10

**E BAGDAD AVE EXTENSION
SUPPLEMENTAL #6
EXHIBIT D**

Task 1: Project Management							
Task Description	Project Manager	Design Engineer	Design EIT	CADD Operator	GIS Graphics	Admin/ Clerical	Total Hours
<i>Rates</i>	\$ 84.00	\$ 45.00	\$ 32.00	\$ 27.00	\$ 25.00	\$ 31.50	
A. Project Management							
1. Prepare monthly project status updates and invoices	20						20
Totals	20						20
Raw Labor	\$ 1,680.00	\$ -	\$ -	\$ -	\$ -	\$ -	\$ 1,680.00
Multiplier	2.88	2.88	2.88	2.88	2.88	2.88	
	\$ 4,846	\$ -	\$ -	\$ -	\$ -	\$ -	\$ 4,845.68

**E BAGDAD AVE EXTENSION
SUPPLEMENTAL #6
EXHIBIT D**

TASK 9: 100% PLANS										
Task Description	Project Manager	Senior Engineer (QA/QC)	Senior Engineer	Design Engineer	Design EIT	Senior Eng Tech	Senior CADD Operator	CADD Operator	GIS Graphics	Admin/ Clerical
<i>Rates</i>	\$ 84.00	\$ 60.00	\$ 54.00	\$ 45.00	\$ 32.00	\$ 44.50	\$ 35.00	\$ 27.00	\$ 25.00	\$ 31.50
A. Roadway										
1. Additional & revised cross-sections				24	16					
2. Additional & revised typical sections	2			8	8					
3. Additional pavement detail				4	8					
4. Additional removal layout				4	8					
5. Revise side streets	2			16	16					
6. Revise grading plans				8	8					
7. New driveway profiles				8	8					
8. Additional traffic control for extension	2			8	8					
9. Revised quantities				8	12					
10. QA/QC	2	12		12	16					
B. Drainage										
1. Check ponding widths and existing storm sewer system on Main St		2			16					
2. Revise drainage for sidestreet changes		2			16					
3. Update SWPPP for extension		2			16					
4. QA/QC	2	8			12					
C. Utilities										
1. Extension of wastewater line reconstruction					10		16			
2. Update City of Round Rock standard utility drawings					4		4			
3. Attend additional utility coordination meetings	8				8					
4. QA/QC		4			4		12			
D. Traffic										
1. Signing & pavement marking revisions for extension	2		8		24					
2. Signing & pavement marking revisions for side street changes	2		8		16					
3. QA/QC		2	2		6					
Totals	22.0	32.0	18.0	100.0	240.0		32.0			
Raw Labor	\$ 1,848.00	\$ 1,920.00	\$ 972.00	\$ 4,500.00	\$ 7,680.00	\$ -	\$ 1,120.00	\$ -	\$ -	\$ -
Multiplier	2.88	2.88	2.88	2.88	2.88	2.88	2.88	2.88	2.88	2.88
	\$ 5,330	\$ 5,538	\$ 2,804	\$ 12,980	\$ 22,152	\$ -	\$ 3,230	\$ -	\$ -	\$ -

**E BAGDAD AVE EXTENSION
SUPPLEMENTAL #6
EXHIBIT D**

Task Description	Total Hours
<i>Rates</i>	
A. Roadway	
1. Additional & revised cross-sections	40.0
2. Additional & revised typical sections	18.0
3. Additional pavement detail	12.0
4. Additional removal layout	12.0
5. Revise side streets	34.0
6. Revise grading plans	16.0
7. New driveway profiles	16.0
8. Additional traffic control for extension	18.0
9. Revised quantities	20.0
10. QA/QC	42.0
B. Drainage	
1. Check ponding widths and existing storm sewer system on Main St	18.0
2. Revise drainage for sidestreet changes	18.0
3. Update SWPPP for extension	18.0
4. QA/QC	22.0
C. Utilities	
1. Extension of wastewater line reconstruction	26.0
2. Update City of Round Rock standard utility drawings	8.0
3. Attend additional utility coordination meetings	16.0
4. QA/QC	20.0
D. Traffic	
1. Signing & pavement marking revisions for extension	34.0
2. Signing & pavement marking revisions for side street changes	26.0
3. QA/QC	10.0
Totals	444.0
Raw Labor	\$ 18,040.00
Multiplier	\$ 52,033.42