

EXHIBIT**"A"**

STATE OF TEXAS

§

§

COUNTY OF WILLIAMSON

§

**SUPPLEMENTAL CONTRACT NO. 7
TO CONTRACT FOR ENGINEERING SERVICES**

FIRM: ATKINS NORTH AMERICA, INC. ("Engineer")
ADDRESS: 11801 Domain Boulevard, Suite 500, Austin, TX 78758
PROJECT: E. Bagdad Avenue Extension

This Supplemental Contract No. 7 to Contract for Engineering Services is made by and between the City of Round Rock, Texas, hereinafter called the "City" and Atkins North America, Inc., hereinafter called the "Engineer".

WHEREAS, the City and Engineer executed a Contract for Engineering Services, hereinafter called the "Contract", on the 24th day of September, 2015 for the E. Bagdad Avenue Extension Project in the amount of \$104,700.41; and

WHEREAS, the City and Engineer executed Supplemental Contract No. 1 on March 10, 2016 to amend the scope of services and to increase the compensation by \$326,360.94 to a total of \$431,061.35; and

WHEREAS, the City and Engineer executed Supplemental Contract No. 2 on September 8, 2016 to amend the scope of services and to increase the compensation by \$85,675.85 to a total of \$516,737.20; and

WHEREAS, the City and Engineer executed Supplemental Contract No. 3 on April 3, 2017 to amend the work schedule; and

WHEREAS, the City and Engineer executed Supplemental Contract No. 4 on August 24, 2017 to amend the scope of services and to increase the compensation by \$199,281.31 to a total of \$716,018.51; and

WHEREAS, the City and Engineer executed Supplemental Contract No. 5 on March 22, 2018, to amend the scope of services and to increase the compensation by \$100,929.81 to a total of \$816,948.32; and

WHEREAS, the City and Engineer executed Supplemental Contract No. 6 on July 12, 2018, to amend the scope of services and to increase the compensation by \$68,879.10 to a total of \$885,827.42; and

WHEREAS, it has become necessary to amend the Contract to modify the provisions for the scope of services and to increase the compensation by \$97,471.52 to a total of \$983,298.94;

NOW THEREFORE, premises considered, the City and the Engineer agree that said Contract is amended as follows:

I.

Article 2, Engineering Services and Exhibit B, Engineering Services shall be amended as set forth in the attached Addendum to Exhibit B. Exhibit C, Work Schedule shall be amended as set forth in the attached Addendum to Exhibit C.

II.

Article 4, Compensation and Exhibit D, Fee Schedule shall be amended by increasing by \$97,471.52 the lump sum amount payable under the Contract for a total of \$983,298.94, as shown by the attached Addendum to Exhibit D.

IN WITNESS WHEREOF, the City and the Engineer have executed this Supplemental Contract in duplicate.

[signature pages follow]

ATKINS NORTH AMERICA, INC.

By: _____

Date

CITY OF ROUND ROCK

APPROVED AS TO FORM:

By: _____
Craig Morgan, Mayor

Stephan L. Sheets, City Attorney

Date

ADDENDUM TO EXHIBIT B

Engineering Services

PROJECT DESCRIPTION

The proposed project will include a new location 3-lane extension of McNeil Rd between Mays St and S Black St as well as the widening of S Georgetown St to 3-lanes between S Black St and E Main St. Lampasas St will be extended from its current termini at Bagdad Ave to the new McNeil Rd extension. Lewis St will be extended to connect to McNeil Rd. Stone St will be improved and extended to connect Main St and McNeil Rd. An alley will be included from Georgetown St west towards Black St. The existing City owned parking lot between Sheppard St and Burnet St will be reconstructed to provide improved drainage. The approximate length of the project is 0.54 miles.

The project will be constructed in two phases. The first phase will include all the improvements west of and including the intersection at Burnet St. The second phase will include the proposed improvements east of Burnet St.

This supplemental includes improvements to and extension of Stone St, the alley connecting to Georgetown St, the parking lot improvements, surveying services to support these efforts, and construction phase services for phase 2.

TASK 1: PROJECT MANAGEMENT

1. Project management, oversight and coordination of efforts

TASK 2: SURVEYING

1. In accordance with previously approved methodology, the following items are added to the survey efforts:
 - Survey the existing City of Round Rock owned parking lot on Bagdad Ave between Sheppard St and Burnet St.
 - Locate and provide flow line/material information for existing City of Round Rock wastewater manholes along proposed alley improvements between Georgetown St and Stone St.
 - Develop acquisition documents for ROW being acquired from Union Pacific Railroad.
 - Survey the alley between Georgetown St and Black St.
 - Mark the temporary construction easements along Lewis St.

TASK 3: ENVIRONMENTAL STUDIES

No changes with this supplemental.

TASK 4: PRELIMINARY DESIGN/30% PLANS

No changes with this supplemental.

TASK 5: DIRECT EXPENSES

No changes with this supplemental.

TASK 6: GEOTECHNICAL DESIGN

No changes with this supplemental.

TASK 7: 60% PLANS

No changes with this supplemental.

TASK 8: 95% PLANS

No changes with this supplemental.

TASK 9: 100% PLANS/FINAL SUBMITTAL

Phase 2 of the McNeil Rd Extension is being modified to include an alley from Georgetown St towards Black St. The alley will utilize the commercial driveway concrete pavement section. In addition, Stone St will be improved to include 24' of pavement with a ribbon curb from Main St to McNeil Rd. Pavement designs for Lewis St and Stone St will match the flexible pavement design with geogrid for an urban local street with high swell conditions as shown in table 3-11 of the May 2018 draft City of Round Rock Transportation Criteria Manual.

The plan revisions anticipated to be included are:

Roadway

1. Add 2 parallel parking spots on the west side of Georgetown St south of the proposed alley.
2. Prepare cross-sections (50' intervals), calculate limits of construction, verify ROW and construction easements, and compute earthwork quantities for the proposed Stone St improvements.
3. Prepare additional typical sections for Stone St and the alley connecting to Georgetown St.
4. Revise the Lewis St pavement design on the typical sections and cross sections to match the flexible pavement design with geogrid for an urban local street with high swell conditions as shown in table 3-11 of the May 2018 draft City of Round Rock Transportation Criteria Manual.
5. Prepare one additional removal layout for Stone St.
6. Add one plan & profile sheet for the Stone St.
7. Add an alley plan and profile sheet.
8. Add grading plans for the Stone St intersections at McNeil Rd and Main St.
9. Provide driveway profiles for the 3 driveways on Stone St.
10. Update the traffic control plan narrative, sequence of construction traffic control plan, and standards for the above changes.
11. Update the quantities to reflect the above changes.

Drainage

1. Revise the drainage design to accommodate the proposed changes to Stone St and the alley.
2. Update hydraulic data, drainage area map, drainage plan & profile, and lateral profile sheets.
3. Update the SWPPP and erosion control plan sheets to include the Stone St and alley improvements.
4. Update the quantities to reflect the above changes.

Utilities

1. No third-party utility design or coordination is included. Atkins will provide an updated plan set to the City of Round Rock for the purposes of utility coordination.
2. The wastewater line in the alley between Georgetown St and Black St will be lowered to accommodate the proposed alley. Resulting conflicts with the existing water lines will also be addressed.
3. The proposed wastewater improvements along Georgetown St will be extended to the north side of Main St.
4. Update the quantities to reflect the above changes.

Traffic

1. Update the signing and pavement marking layouts to include the Stone St improvements and to accommodate the proposed alley.
2. Prepare small sign and pavement marking summaries for the revisions.

TASK 10: WATER QUALITY PLANS AND WATER POLLUTION ABATEMENT PLANS (WPAP)

No changes with this supplemental.

TASK 11: LANDSCAPING AND IRRIGATION PLANS

This task is no longer needed, and any remaining budget will be reallocated to other items.

TASK 12: BARRIER WITH FENCE

This task was completed under budget. Any remaining budget will be reallocated to other items.

TASK 13: CONSTRUCTION PHASE SERVICES (Add Phase 2)

These services will be provided on an as requested by the City of Round Rock basis. Invoicing for these services will be based on actual labor charged to the project at the contract multiplier. Any budget remaining at the end of the contract will not be invoiced. If all the budget is used, then a supplemental will be needed to continue these services.

1. Attend weekly meetings with the City and the Contractor to appraise and answer general questions and provide clarification that pertains to the plans and construction of McNeil Rd Extension Phase 2.

2. Review shop drawings. Shop drawings will be reviewed based on the following procedures:
 - Review the drawings for conformity to the plans, specifications and special provisions, as well as conformity to any subsidiary standards or criteria referred to by the plans, specifications or special provisions.
 - If the drawing is found to be in conformity, or an alternate design is adequate and acceptable, the drawing shall be marked “No Exceptions Taken” with signature, date and statement that “Review is only for general conformance with the design concept of the contract documents. Markings or comments shall not be construed as relieving the contractor from compliance with the project plans and specifications, nor departures there-from. The Contractor remains solely responsible for details and accuracy, for confirming and correlating all quantities and dimensions, for selecting fabrication processes, for techniques of assembly, for safety and for satisfactory performance of his work.”
 - If there are only minor corrections, the incorrect information shall be crossed out and the correct information shall be written next to the crossed-out information. All redlines shall be done in indelible red ink. The submittal shall be returned marked “Make Correction as Noted” and no re-submittal shall be required.
 - If the corrections are more significant and the Engineer does not concur with the information on the drawings, then the submittal shall be marked “Amend and Resubmit.” The drawings must then be resubmitted for a second review.
 - If the drawings are found not to be in conformity, the drawings shall be marked “Rejected See Remarks.” An explanation of why the submittal was disapproved shall be provided in enough detail for the Contractor to be able to make the corrections for re-submittal.
 - Shop drawing and submittal reviews include the following:
 - (1) Culverts, Manholes, & Inlets
 - (2) Concrete and Asphalt Mix Designs
 - (3) Water/Wastewater Infrastructure Components
 - (4) Signs
3. Respond to requests for information (RFIs). The engineer shall document each question in sufficient detail, formulate a response and submit a written version of the response to the City for distribution to all involved parties.
4. Provide minor redesign (major redesign should be handled with a contract supplement).
5. Develop change orders. Change orders documents will be submitted to the City in electronic format.
6. Assemble updated plans based upon redesign requests performed under Task 13. Two (2) hard copies and an electronic version of the updated plans will be submitted to the City upon project completion. The Contractor will be responsible for marking any additional updates not addressed through plan revisions and providing the final as-built plans.

7. Review monthly pay applications. Reviews will consist of reviewing calculations. Engineer is not responsible for quantity calculations or confirmation.
8. Participate in final walkthrough and prepare the punch list.

NOT INCLUDED WITHIN THIS SCOPE

The following items are not included with this scope. These items, if necessary, would be added to the scope through a supplemental agreement.

1. All inspection services, including but not limited to:
 - a. Geotechnical investigations and analysis
 - b. Materials testing
 - c. Construction survey; verification of contractor's horizontal and vertical control
2. All tasks related to delay and cost claims shall be considered supplemental services and subject to additional fee, specifically, but not limited to:
 - d. Time Impact Analyses (TIA) for delay claims
 - e. Claims defense, response and resolution
3. No third-party utility design or coordination is included. Atkins will provide plans to the City of Round Rock for the purposes of utility coordination.

DELIVERABLES

100% Submittal (Phase 2 Only)

1. A draft of the 100% plans will be submitted for review in advance of the previously scoped 100% plan submittal.

Construction Phase Services

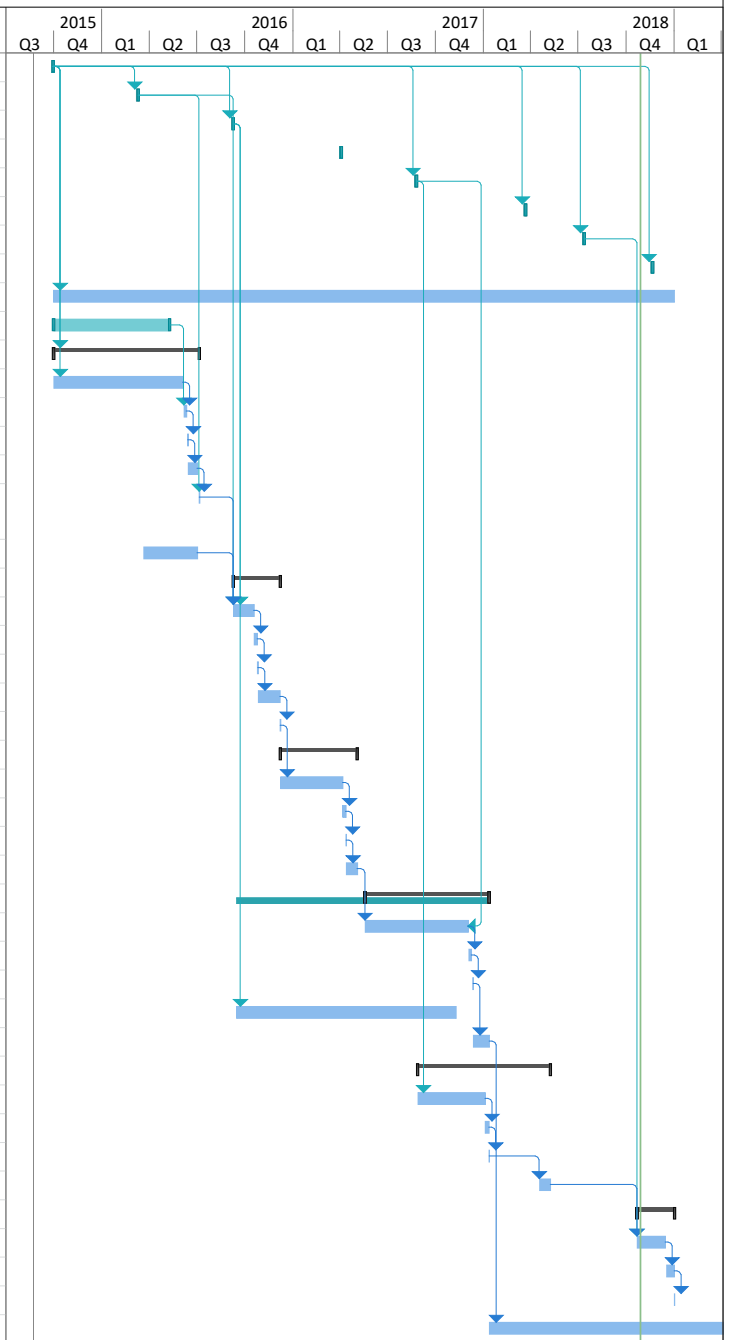
1. Reviewed shop drawings/submittals
2. Responses to RFIs
3. Minor redesign plan revisions
4. Change orders
5. Updated plans per Task 13 item 6
6. Review of monthly pay applications including supporting documentation
7. Punch list

ADDENDUM TO EXHIBIT C
Work Schedule

Attached Behind This Page

E BAGDAD AVE EXTENSION SUPPLEMENTAL #7
EXHIBIT C

ID	Task Name	Start	Finish	Predecessors	Successors	Resource Names	2015		2016		2017		2018				
							Q3	Q4	Q1	Q2	Q3	Q4	Q1	Q2	Q3	Q4	Q1
1	NTP	Tue 9/29/15	Tue 9/29/15		2,8,10,11,3,6,4,5,												
2	Supplemental #1	Thu 3/10/16	Thu 3/10/16	1	15,18												
3	Supplemental #2	Thu 9/8/16	Thu 9/8/16	1	18,32												
43	Supplemental #3	Mon 4/3/17	Mon 4/3/17														
4	Supplemental #4	Fri 8/25/17	Fri 8/25/17	1	35,29FF+15 days												
5	Supplemental #5	Thu 3/22/18	Thu 3/22/18	1													
6	Supplemental #6	Thu 7/12/18	Thu 7/12/18	1	40												
7	Anticipated NTP Supplemental #7	Tue 11/20/18	Tue 11/20/18	1													
8	Survey	Wed 9/30/15	Mon 12/31/18	1													
9	Environmental Tech Memo	Thu 10/1/15	Mon 5/9/16		12												
10	Prepare 30% Plans	Thu 10/1/15	Tue 7/5/16	1													
11	Roadway & Drainage Design	Thu 10/1/15	Fri 6/3/16	1	12												
12	QA/QC	Mon 6/6/16	Fri 6/10/16	11,9	13												
13	Submit 30% Plans and Environmental Tech Memo	Mon 6/13/16	Mon 6/13/16	12	14												
14	City Review 30% Plans and Environmental Tech Mem	Tue 6/14/16	Fri 7/1/16	13	15												
15	Meet with City to Review 30% Plans and Environmental Tech Memo	Tue 7/5/16	Tue 7/5/16	14,2	18												
16	Geotech Pavement Design	Mon 3/21/16	Fri 7/1/16		18												
17	Prepare 60% Plans	Fri 9/9/16	Wed 12/7/16														
18	Roadway, Traffic, Utility & Drainage Design	Fri 9/9/16	Mon 10/17/16	3,2,15,16	19												
19	QA/QC	Tue 10/18/16	Mon 10/24/16	18	20												
20	Submit 60% Plans	Tue 10/25/16	Tue 10/25/16	19	21												
21	City Review 60% Plans	Wed 10/26/16	Tue 12/6/16	20	22												
22	Meet with City to Review 60% Plans	Wed 12/7/16	Wed 12/7/16	21	24												
23	Prepare 95% Plans Phase 1	Thu 12/8/16	Wed 5/3/17														
24	Roadway, Traffic, Utility & Drainage Design	Thu 12/8/16	Wed 4/5/17	22	25												
25	QA/QC	Thu 4/6/17	Tue 4/11/17	24	26												
26	Submit 95% Plans	Wed 4/12/17	Wed 4/12/17	25	27												
27	City Review 95% Plans	Thu 4/13/17	Wed 5/3/17	26	29												
28	Prepare 100% Plans Phase 1	Fri 5/19/17	Thu 1/11/18														
29	Roadway, Traffic, Utility & Drainage Design	Fri 5/19/17	Fri 12/1/17	27,4FF+15 day	30												
30	QA/QC	Mon 12/4/17	Fri 12/8/17	29	31												
31	Submit 100% Plans	Mon 12/11/17	Mon 12/11/17	30	33												
32	Water Pollution Abatement Plan	Thu 9/15/16	Wed 11/8/17	3													
33	Bid Phase Services	Tue 12/12/17	Thu 1/11/18	31	44												
34	Prepare 95% Plans Phase 2	Mon 8/28/17	Tue 5/8/18														
35	Roadway, Traffic, Utility & Drainage Design	Mon 8/28/17	Wed 1/3/18	4	36												
36	QA/QC	Thu 1/4/18	Wed 1/10/18	35	37												
37	Submit 95% Plans	Thu 1/11/18	Thu 1/11/18	36	38												
38	City Review 95% Plans	Wed 4/18/18	Tue 5/8/18	37	40												
39	Prepare 100% Plans Phase 2	Mon 10/22/18	Tue 1/1/19														
40	Roadway, Traffic, Utility & Drainage Design	Mon 10/22/18	Fri 12/14/18	38,6	41												
41	QA/QC	Mon 12/17/18	Mon 12/31/18	40	42												
42	Submit 100% Plans	Tue 1/1/19	Tue 1/1/19	41													
44	Construction Phase Services	Fri 1/12/18	Fri 2/28/20	33													



**ADDENDUM TO EXHIBIT D
Fee Schedule**

Project Name: E Bagdad Ave Extension

Task	Total Labor Hours	Total Loaded Labor Cost	Other Direct Costs	Subconsultants	TOTALS
Task 1: Project Management	64.0	\$11,871.93			\$11,871.93
Task 2: Surveying				\$15,000.00	\$15,000.00
Task 9: 100% Plans/Final Submittal	665.0	\$83,083.30			\$83,083.30
Task 11: Landscaping and Irrigation Plans				-8,288.48	-8,288.48
Task 12: Barrier with Fence		-\$14,290.41			-\$14,290.41
Task 13: Construction Phase Services	52.0	\$10,095.18			\$10,095.18
GRAND TOTAL:	781	\$90,760.00	\$0.00	\$6,711.52	\$97,471.52

Overhead Rate = 157.53%
Profit Rate = 12%

Atkins Raw Labor = \$ 31,466.51
Atkins Overhead = \$ 49,569.20
Atkins Profit = \$ 9,724.29
Atkins Total Labor = \$ 90,760.00

**E BAGDAD AVE EXTENSION
SUPPLEMENTAL #7
EXHIBIT D**

Task 1: Project Management							
Task Description	Project Manager	Design Engineer	Design EIT	CADD Operator	GIS Graphics	Admin/ Clerical	Total Hours
<i>Rates</i>	\$ 84.00	\$ 45.00	\$ 32.00	\$ 27.00	\$ 25.00	\$ 31.50	
A. Project Management							
1. Prepare monthly project status updates and invoices	40					24	64
Totals	40					24	64
Raw Labor	\$ 3,360.00	\$ -	\$ -	\$ -	\$ -	\$ 756.00	\$ 4,116.00
Multiplier	2.88	2.88	2.88	2.88	2.88	2.88	
	\$ 9,691	\$ -	\$ -	\$ -	\$ -	\$ 2,181	\$11,871.93

**E BAGDAD AVE EXTENSION
SUPPLEMENTAL #7
EXHIBIT D**

TASK 9: 100% PLANS										
Task Description	Project Manager	Senior Engineer (QAQC)	Senior Engineer	Design Engineer	Design EIT	Senior Eng Tech	Senior CADD Operator	CADD Operator	GIS Graphics	Admin/ Clerical
<i>Rates</i>	\$ 84.00	\$ 60.00	\$ 54.00	\$ 45.00	\$ 32.00	\$ 44.50	\$ 35.00	\$ 27.00	\$ 25.00	\$ 31.50
A. Roadway										
1. Georgetown parallel parking	2			8			16			
2. Stone St cross-sections	2			8		16				
3. Stone St and alley typical sections	1			6			8			
4. Stone St removal layout	1			4			8			
5. Lewis St pavement design	1			8			8			
6. Stone St plan and profile sheet	8			24		40				
7. Alley plan and profile sheet	8			16		32				
8. Stone St intersection grading plans	2			16			24			
9. Stone St driveway profiles	1			12			16			
10. Traffic control	2			8			16			
11. Revised quantities	2			8	24		32			
12. QA/QC		24		8			16			
B. Drainage										
1. Stone St and alley drainage design			16					6		
2. Stone St and alley SWPPP			8					8		
3. Revised quantities			4					8		
4. QA/QC		8						8		
C. Utilities										
1. Alley wastewater line design	4			6	16	12	24			
2. Extend Georgetown St wastewater improvements	4			2	12	4	16			
3. Revised Quantities	1			2	4		4			
4. QA/QC	2	4								2
D. Traffic										
1. Signing & pavement marking for Stone St and alley			4		24					
2. Revised quantities			2		4					
3. QA/QC		4	2		4					
Totals	41.0	40.0	36.0	136.0	88.0	104.0	188.0	30.0		2.0
Raw Labor	\$ 3,444.00	\$ 2,400.00	\$ 1,944.00	\$ 6,120.00	\$ 2,816.00	\$ 4,628.00	\$ 6,580.00	\$ 810.00	\$ -	\$ 63.00
Multiplier	2.88	2.88	2.88	2.88	2.88	2.88	2.88	2.88	2.88	2.88
	\$ 9,934	\$ 6,922	\$ 5,607	\$ 17,652	\$ 8,122	\$ 13,349	\$ 18,979	\$ 2,336	\$ -	\$ 182

**E BAGDAD AVE EXTENSION
SUPPLEMENTAL #7
EXHIBIT D**

Task Description	Total Hours
<i>Rates</i>	
A. Roadway	
1. Georgetown parallel parking	26.0
2. Stone St cross-sections	26.0
3. Stone St and alley typical sections	15.0
4. Stone St removal layout	13.0
5. Lewis St pavement design	17.0
6. Stone St plan and profile sheet	72.0
7. Alley plan and profile sheet	56.0
8. Stone St intersection grading plans	42.0
9. Stone St driveway profiles	29.0
10. Traffic control	26.0
11. Revised quantities	66.0
12. QA/QC	48.0
B. Drainage	
1. Stone St and alley drainage design	22.0
2. Stone St and alley SWPPP	16.0
3. Revised quantities	12.0
4. QA/QC	16.0
C. Utilities	
1. Alley wastewater line design	62.0
2. Extend Georgetown St wastewater improvements	38.0
3. Revised Quantities	11.0
4. QA/QC	8.0
D. Traffic	
1. Signing & pavement marking for Stone St and alley	28.0
2. Revised quantities	6.0
3. QA/QC	10.0
Totals	665.0
Raw Labor	\$ 28,805.00
Multiplier	
	\$ 83,083.30

**E BAGDAD AVE EXTENSION
SUPPLEMENTAL #7
EXHIBIT D**

TASK 13: CONSTRUCTION PHASE SERVICES											
Task Description	Project Manager	Senior Engineer (QAQC)	Senior Engineer	Design Engineer	Design EIT	Senior Eng Tech	Senior CADD Operator	CADD Operator	GIS Graphics	Admin/ Clerical	Total Hours
<i>Rates</i>	\$ 82.00	\$ 65.00	\$ 62.00	\$ 45.00	\$ 32.50	\$ 44.00	\$ 35.00	\$ 26.00	\$ 25.00	\$ 31.50	
A. Construction Phase Services (Phase 1 only)											
1. Attend weekly meetings	4										4.0
2. Shop drawing/submittal review	4		8	4							16.0
3. Respond to RFIs	4			4							8.0
4. Assemble updated plans	4			4							8.0
5. Review pay applications	4										4.0
6. Walkthrough and punch list	4		8								12.0
Totals	24.0		16.0	12.0							52.0
Raw Labor	\$ 1,968.00	\$ -	\$ 992.00	\$ 540.00	\$ -	\$ -	\$ -	\$ -	\$ -	\$ -	\$ 3,500.00
Multiplier	2.88	2.88	2.88	2.88	2.88	2.88	2.88	2.88	2.88	2.88	
	\$ 5,676	\$ -	\$ 2,861	\$ 1,558	\$ -	\$ -	\$ -	\$ -	\$ -	\$ -	\$ 10,095.18